



Chipsmall Limited consists of a professional team with an average of over 10 year of expertise in the distribution of electronic components. Based in Hongkong, we have already established firm and mutual-benefit business relationships with customers from,Europe,America and south Asia,supplying obsolete and hard-to-find components to meet their specific needs.

With the principle of “Quality Parts,Customers Priority,Honest Operation,and Considerate Service”,our business mainly focus on the distribution of electronic components. Line cards we deal with include Microchip,ALPS,ROHM,Xilinx,Pulse,ON,Everlight and Freescale. Main products comprise IC,Modules,Potentiometer,IC Socket,Relay,Connector.Our parts cover such applications as commercial,industrial, and automotives areas.

We are looking forward to setting up business relationship with you and hope to provide you with the best service and solution. Let us make a better world for our industry!



Contact us

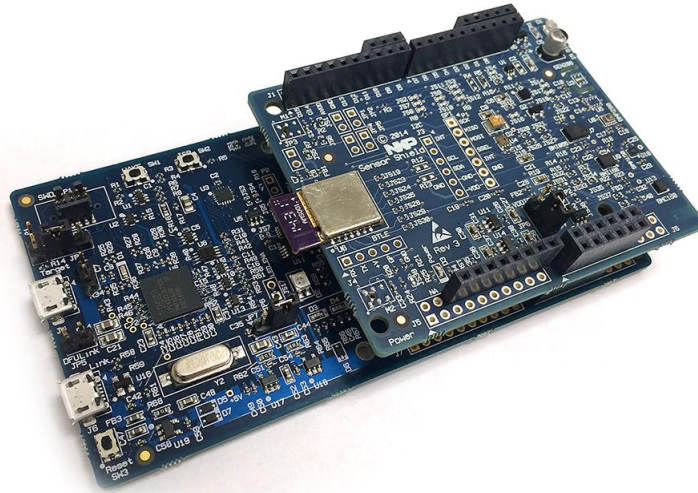
Tel: +86-755-8981 8866 Fax: +86-755-8427 6832

Email & Skype: info@chipsmall.com Web: www.chipsmall.com

Address: A1208, Overseas Decoration Building, #122 Zhenhua RD., Futian, Shenzhen, China



The LPCXpresso54102 Sensor Processing/Motion Solution has been developed by NXP and its partners to provide all that you need to develop an always-on sensor processing product. The Solution combines an LPCXpresso54102 board and a Sensor Shield Board (SSB), plus application software and sensor fusion software from Bosch Sensortec.



Feature summary

The LPCXpresso54102 Sensor Processing/Motion Solution includes the following features:

- LPCXpresso54102 development board with:
 - Built-in Link2 high-speed USB based debug probe
 - Support for external debug probes
 - Tri-color LED
 - Target Reset, ISP and WAKE buttons
 - On-board 1.8/3.3V or external power supply options
 - Built-in MCU power consumption and supply voltage measurement for LPC54102 device and sensor board
 - UART, I²C and SPI port bridging from LPC54102 target to usb via Link2 device
 - FTDI UART connector
- Sensor Shield Board with:
 - Bosch Sensortec sensors:
 - BMI055 inertial measurement unit
 - BMC150 digital compass
 - BMM150 magnetometer
 - BMP280 pressure/humidity sensor
 - Murata pressure sensor
 - MAX44000 ambient light and proximity sensor
 - Ack.me AMS0002 Bluetooth LE module
 - IR remote control driver
 - Dual Knowles digital microphones
 - Headers for easy prototyping of additional SPI and I²C sensors
- Supported by NXP Sensor Framework and Bosch Sensortec BSXlite sensor fusion library, available for free download at www.lpcware.com (subject to license terms and conditions).

Development Tools

The LPCXpresso54102 Sensor Processing/Motion Solution is fully supported by the LPCXpresso Integrated Development Environment (IDE), which is available for free at www.lpcware.com/lpcpresso/home. The on-board CMSIS-DAP debug interface also enables the kit to be used with third-party tools from vendors such as Atollic, IAR, Keil, Mentor Graphics and Rowley. An external debug probe, such as those available from SEGGER, can be used by simply connecting it to the board via the P1 connector and powering the board via the J3 (power only) usb connector.

Board specifications

Recommended operating conditions: 0 to 70°C ambient

Weight: 1.8 ounces

Size: 4.8 x 2.3 inches including connectors

The LPCXpresso54102 SMPS is RoHS compliant.