



Chipsmall Limited consists of a professional team with an average of over 10 year of expertise in the distribution of electronic components. Based in Hongkong, we have already established firm and mutual-benefit business relationships with customers from,Europe,America and south Asia,supplying obsolete and hard-to-find components to meet their specific needs.

With the principle of “Quality Parts,Customers Priority,Honest Operation,and Considerate Service”,our business mainly focus on the distribution of electronic components. Line cards we deal with include Microchip,ALPS,ROHM,Xilinx,Pulse,ON,Everlight and Freescale. Main products comprise IC,Modules,Potentiometer,IC Socket,Relay,Connector.Our parts cover such applications as commercial,industrial, and automotives areas.

We are looking forward to setting up business relationship with you and hope to provide you with the best service and solution. Let us make a better world for our industry!



Contact us

Tel: +86-755-8981 8866 Fax: +86-755-8427 6832

Email & Skype: info@chipsmall.com Web: www.chipsmall.com

Address: A1208, Overseas Decoration Building, #122 Zhenhua RD., Futian, Shenzhen, China





LUMILEDS LUXEON® 20mm LENSES AND HOLDERS



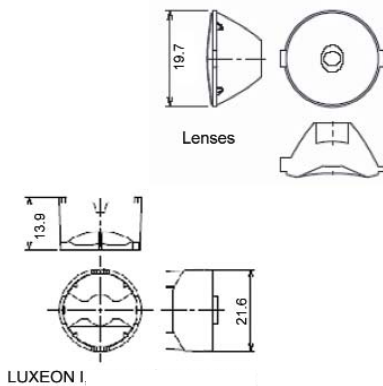
OPERATING CONDITIONS

- ▲ 105°C max temperature

MATERIALS/FINISH

- ▲ Lenses are optical grade PMMA acrylic
- ▲ Holders are made of durable polycarbonate

MECHANICAL DIMENSIONS



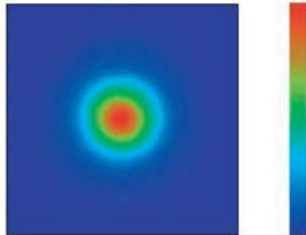
FEATURES / BENEFITS

- ▲ For LUXEON I
- ▲ Available in spot, medium, wide and oval lenses
- ▲ Snap-in optics
- ▲ Greater than 85% efficiency

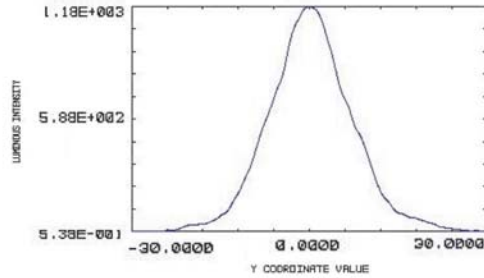
ORDERING INFORMATION

| HOLDERS | | | |
|--------------------------------------|---------------|--|----------|
| Dialight P/N | Reference P/N | Description | |
| OHES1WH | OH-ES1-WH | LUXEON I, III, V & Star I - Direct PCB Mount (White) | |
| OHES1BK | OH-ES1-BK | LUXEON I, III, V & Star I - Direct PCB Mount (Black) | |
| LENS | | | |
| Dialight P/N | Reference P/N | Description | Degree* |
| OP005 | OP-005 | Spot Lens | 5° |
| OP015 | OP-015 | Medium Lens | 15° |
| OP025 | OP-025 | Wide Lens | 25° |
| OP520 | OP-520 | Oval Lens | 5° X 20° |
| *All angles refer to half divergence | | | |

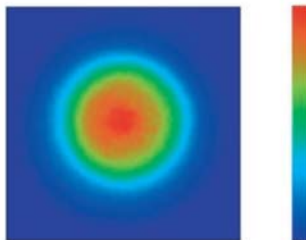
PHOTOMETRIC DATA



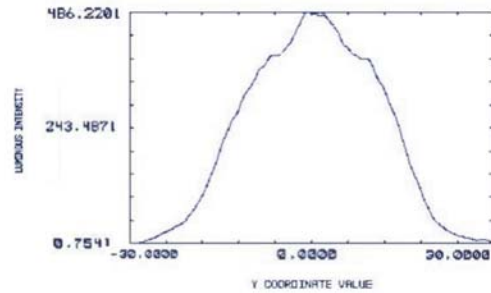
Spot Lens



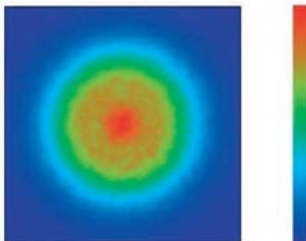
Typical half-angle divergence 5°
when using LUXEON I Cool White



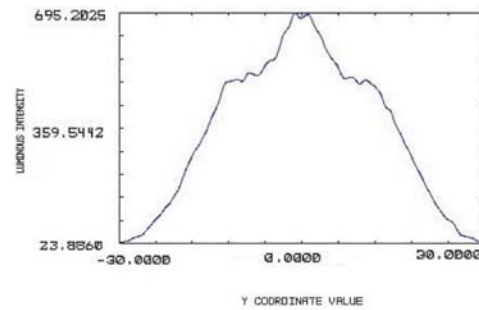
Medium Lens



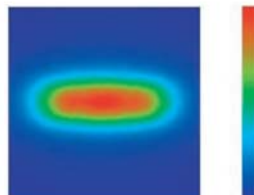
Typical half-angle divergence 15° when
using LUXEON I Cool White



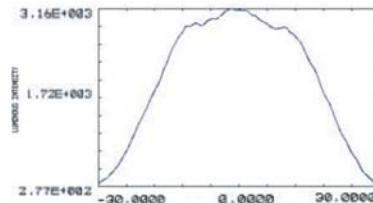
Wide Lens



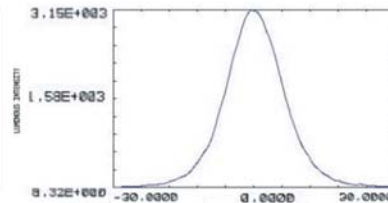
Typical half-angle divergence 25° when
using LUXEON I Cool White



Oval Lens



Horizontal



Vertical

Typ. half-angle divergence
5° X 20° LUXEON I Cool White

Dialight reserves the right to make changes at any time in order to supply the best product possible.

The most current version of this document will always be available at:

www.dialight.com/Assets/Brochures_And_Catalogs/Illumination/MDEXLUMLUX.pdf