



Chipsmall Limited consists of a professional team with an average of over 10 year of expertise in the distribution of electronic components. Based in Hongkong, we have already established firm and mutual-benefit business relationships with customers from,Europe,America and south Asia,supplying obsolete and hard-to-find components to meet their specific needs.

With the principle of “Quality Parts,Customers Priority,Honest Operation,and Considerate Service”,our business mainly focus on the distribution of electronic components. Line cards we deal with include Microchip,ALPS,ROHM,Xilinx,Pulse,ON,Everlight and Freescale. Main products comprise IC,Modules,Potentiometer,IC Socket,Relay,Connector.Our parts cover such applications as commercial,industrial, and automotives areas.

We are looking forward to setting up business relationship with you and hope to provide you with the best service and solution. Let us make a better world for our industry!



Contact us

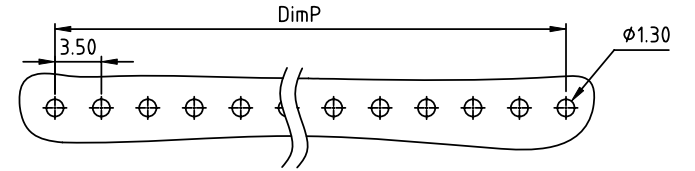
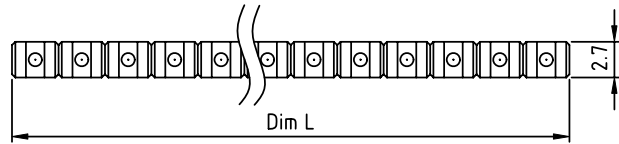
Tel: +86-755-8981 8866 Fax: +86-755-8427 6832

Email & Skype: info@chipsmall.com Web: www.chipsmall.com

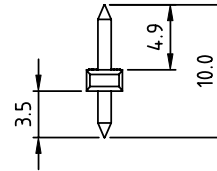
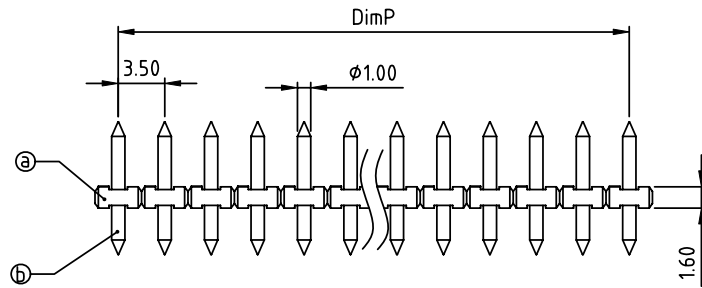
Address: A1208, Overseas Decoration Building, #122 Zhenhua RD., Futian, Shenzhen, China



PRODUCT NUMBER	PITCH
OPxx2Bx100J0G	3.50 mm



RECOMMENDED P.C.B LAYOUT
TOP VIEW



Material:

- Item ① Terminal(housing): High temp. polyamide (UL94V-0)
- Item ② Pin: Brass, Tin or Au plated.

Electrical:

- Voltage rating: 150V
- Current rating: 10A
- Withstanding Voltage: 1.3KV
- Operating temperature: -40°C to +120°C
- Reflow Soldering temperature: 260°C/10 Sec Max
- Safety Approval:

DIMENSION

Dim P	(N-1)×3.50
Dim L	N×3.50

N=Number of poles

Poles	Tolerance
2p-5p	±0.10
6p-9p	±0.15
10p-13p	±0.20
14p-17p	±0.25
18p-24p	±0.30

PART NO.: OP xx 2B x 1 00J0 G

- Solid block
- No. of poles
- 02 2 poles
- 03 3 poles
-
- 24 24 poles
- 0 Tin plating 120u" Min RoHS compliant (lead<4%) In copper Alloy
- 1 Gold plating 10u"
- 2 Gold flash

mat'l. code				surface ASME Y14.5	tolerance ASME Y14.5	projection 	product family TERMINAL BLOCK
ltr	ecn no	dr	date	tolerances unless otherwise specified		MM	title TERMINAL BLOCK
				angles $\frac{D}{E}$	X.±0.5		
				X*±1*	X.X±0.3	scale	PLUGGABLE SOCKET, VERTICAL, THR
					X.XX±0.1		
		dr	EVIN ZHONG	041714		dwg no OPxx2Bx100J0G	sheet 1 of 1 size A4
		enr	EVIN ZHONG	041714			
		chr	HANKE FENG	041714			
		appd	SHI JUN	041714			
sheet index	revision sheet	A	1				type CUSTOMER Drawing