



Chipsmall Limited consists of a professional team with an average of over 10 year of expertise in the distribution of electronic components. Based in Hongkong, we have already established firm and mutual-benefit business relationships with customers from,Europe,America and south Asia,supplying obsolete and hard-to-find components to meet their specific needs.

With the principle of “Quality Parts,Customers Priority,Honest Operation,and Considerate Service”,our business mainly focus on the distribution of electronic components. Line cards we deal with include Microchip,ALPS,ROHM,Xilinx,Pulse,ON,Everlight and Freescale. Main products comprise IC,Modules,Potentiometer,IC Socket,Relay,Connector.Our parts cover such applications as commercial,industrial, and automotives areas.

We are looking forward to setting up business relationship with you and hope to provide you with the best service and solution. Let us make a better world for our industry!



Contact us

Tel: +86-755-8981 8866 Fax: +86-755-8427 6832

Email & Skype: info@chipsmall.com Web: www.chipsmall.com

Address: A1208, Overseas Decoration Building, #122 Zhenhua RD., Futian, Shenzhen, China





Copyright FCI.



FCIconnect.com

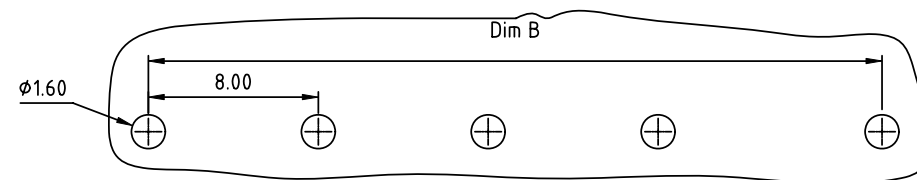
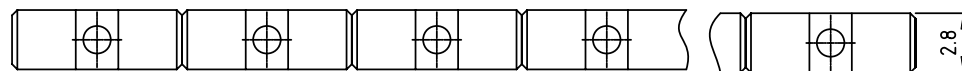


1 | 2

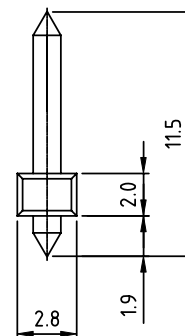
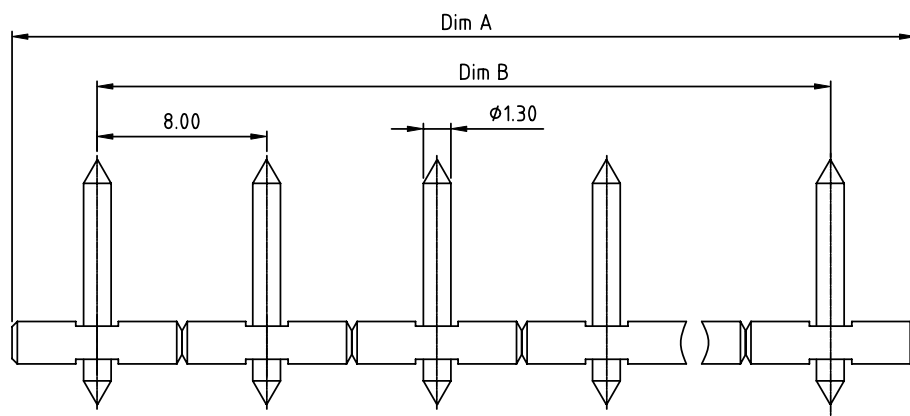
3 |

4

PRODUCT NUMBER	PITCH
OPxx63x000J0G	8.00 mm



RECOMMENDED P.C.B LAYOUT
TOP VIEW



Material:

- Item ③ Male contact pin: Brass (CuZn), Tin or Au plated.
- Item ⑤ Terminal(housing): Thermoplastic (UL94V-0)

Electrical cULus

- Voltage rating: 300V
- Current rating: 10A
- Withstanding Voltage: 1.6KV
- Operating temperature: -40°C to +115°C
- Soldering temperature: 260°C±5°C/5 Sec

DIMENSION

Dim A	N×8.0
Dim B	(N-1)×8.0

N = Number of poles

Poles	Tolerance
2P-6P	±0.15
7P-12P	±0.20
13P-18P	±0.30
19P-20P	±0.40

PART NO.: OP xx 6 3 x 0 00J0 G

Solid block
No. of poles
02 2 poles
03 3 poles
...
20 20 poles

0 Tin plating 120u" Min
1 Gold plating 10u"
2 Gold flash
RoHS compliant
(lead<4%)
In copper Alloy

mat'l. code				surface ASME Y14.5	tolerance ASME Y14.5	projection	product family TERMINAL BLOCK			
ltr	ecn	no	dr	date	tolerances unless otherwise specified		title			
					angles	MM	TERMINAL BLOCK			
					parallelism		PLUGGABLE SOCKET, VERTICAL			
					X°±1°	scale	dwg no			
					dr	EVIN ZHONG	041714	sheet 1 of 1		size
					enr	EVIN ZHONG	041714	OPxx63x000J0G		A4
					chr	HANKE FENG	041714	type		
					appd	SHI JUN	041714			
sheet index	revision	A		1						