



Chipsmall Limited consists of a professional team with an average of over 10 year of expertise in the distribution of electronic components. Based in Hongkong, we have already established firm and mutual-benefit business relationships with customers from,Europe,America and south Asia,supplying obsolete and hard-to-find components to meet their specific needs.

With the principle of “Quality Parts,Customers Priority,Honest Operation,and Considerate Service”,our business mainly focus on the distribution of electronic components. Line cards we deal with include Microchip,ALPS,ROHM,Xilinx,Pulse,ON,Everlight and Freescale. Main products comprise IC,Modules,Potentiometer,IC Socket,Relay,Connector.Our parts cover such applications as commercial,industrial, and automotives areas.

We are looking forward to setting up business relationship with you and hope to provide you with the best service and solution. Let us make a better world for our industry!



## Contact us

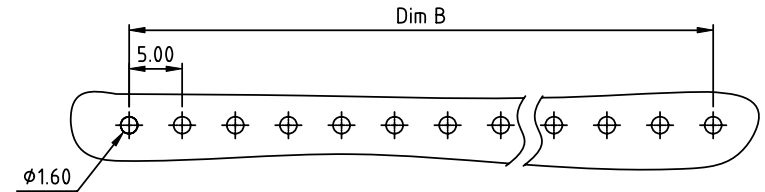
Tel: +86-755-8981 8866 Fax: +86-755-8427 6832

Email & Skype: info@chipsmall.com Web: www.chipsmall.com

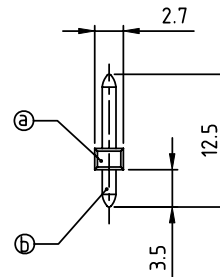
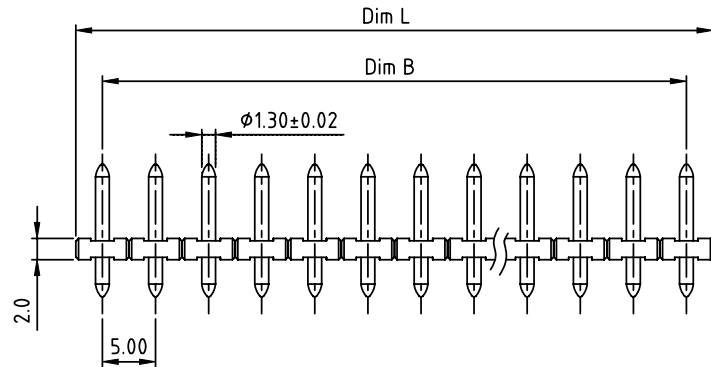
Address: A1208, Overseas Decoration Building, #122 Zhenhua RD., Futian, Shenzhen, China



PRODUCT NUMBER	PITCH
OPxx00x000J0G	5.00 mm



RECOMMENDED P.C.B LAYOUT  
TOP VIEW



Material:

- Item Ⓐ Terminal(housing): Thermoplastic (UL94V-0)
- Item Ⓑ Contact pin: Brass, Tin plated

Electrical:

- UL / VDE / TUV
- Voltage rating: 300V / 300V / 300V
- Current rating: 15A / 12A / 15A
- Withstanding Voltage: 1.6KV / 2.5KV / 2.5KV
- Operating temperature: -40°C to +115°C
- Soldering temperature: 260°C±5°C/5 Sec
- Safety Approval:

N = Number of poles  
Dim L=Nx5.0  
Dim B=(N-1)x5.0

poles	Tolerance
2-5p	±0.10
6-9p	±0.15
10-13p	±0.20
14-17p	±0.25
18-21p	±0.30
22-24p	±0.40

PART NO.: OP xx 00 x 0 00J0 G

- OP: Solid block
- xx: No. of poles
- 00: 02 2 poles, 03 3 poles, ... .., 24 24 poles
- x: 0 Tin plating 120u" Min RoHS compliant (lead<4%) In copper Alloy
- 0: 1 Gold plating 10u"
- 00: 2 Gold flash
- J: In copper Alloy
- G: In copper Alloy

mat'l. code		surface ASME Y14.5 ✓	tolerance ASME Y14.5	projection 	product family TERMINAL BLOCK
ltr	ecn no	dr	date	tolerances unless otherwise specified	title TERMINAL BLOCK
				angles $\phi$ X.±0.5	scale PLUGGABLE SOCKET, VERTICAL, 12.5mm HEIGHT
				length L X.X±0.3	dwg no sheet 1 of 1 size
				width W X.XX±0.1	OPxx00x000J0G A4
		dr	EVIN ZHONG 041714		type CUSTOMER Drawing
		enr	EVIN ZHONG 041714		
		chr	HANKE FENG 041714		
		appd	SHI JUN 041714		
sheet index	revision sheet	A	1		