



Chipsmall Limited consists of a professional team with an average of over 10 year of expertise in the distribution of electronic components. Based in Hongkong, we have already established firm and mutual-benefit business relationships with customers from,Europe,America and south Asia,supplying obsolete and hard-to-find components to meet their specific needs.

With the principle of “Quality Parts,Customers Priority,Honest Operation,and Considerate Service”,our business mainly focus on the distribution of electronic components. Line cards we deal with include Microchip,ALPS,ROHM,Xilinx,Pulse,ON,Everlight and Freescale. Main products comprise IC,Modules,Potentiometer,IC Socket,Relay,Connector.Our parts cover such applications as commercial,industrial, and automotives areas.

We are looking forward to setting up business relationship with you and hope to provide you with the best service and solution. Let us make a better world for our industry!



## Contact us

Tel: +86-755-8981 8866 Fax: +86-755-8427 6832

Email & Skype: info@chipsmall.com Web: www.chipsmall.com

Address: A1208, Overseas Decoration Building, #122 Zhenhua RD., Futian, Shenzhen, China

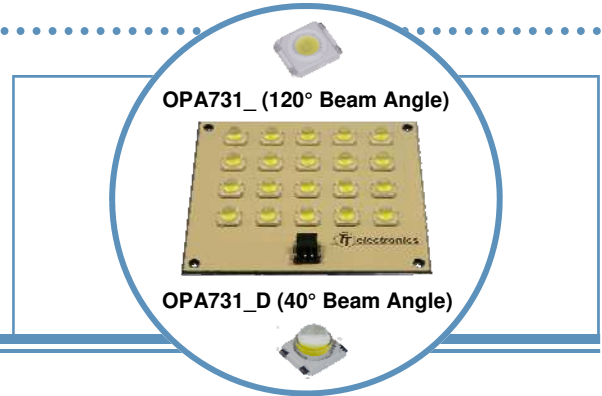


# OPA731 Series

## 20 Watt Light Flood on OptoTherm Linear Heat Spreader

### OPA731 Series

- 20, 1 watt LEDs per square substrate
- Mono-color per strip (Blue, Green, Red, Yellow, White)
- Two component beam angle options (120° or 40°)
- Universal connector (Tyco 2-292173-2 mates with 173977-2)
- RoHS Compliant



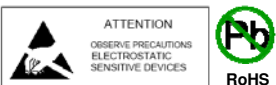
The **OPA731** Series are designed for areas where lighting intensity and reliability are essential. The light beam angles of 40° and 120° are ideal for illuminating small and medium size areas while requiring minimal space. A High Performance Heat Spreader (HPHS) is used to ensure the best heat dissipation of any light assembly in the industry.

OptoTherm is designed to be the optimum material for distribution of heat for high power devices.

For custom colors and design contact your OPTEK representative.

### Electrical / Optical Characteristics: $T_A=25^\circ\text{C}$ , $I_F=1.4\text{A}$

Part Number	Typical Forward Voltage (V)	Luminous Flux (lm)	Beam Angle	Color	Dominant Wavelength
OPA731Y	12.5	700	120°	Yellow	587 nm
OPA731B	18.0	180		Blue	470 nm
OPA731G	18.0	960		Green	530 nm
OPA731R	12.5	520		Red	625 nm
OPA731W	18.0	960		White	6,500°K
OPA731YD	12.5	700	40°	Yellow	587 nm
OPA731BD	18.0	180		Blue	470 nm
OPA731GD	18.0	960		Green	530 nm
OPA731RD	12.5	520		Red	625 nm
OPA731WD	18.0	960		White	6,500°K

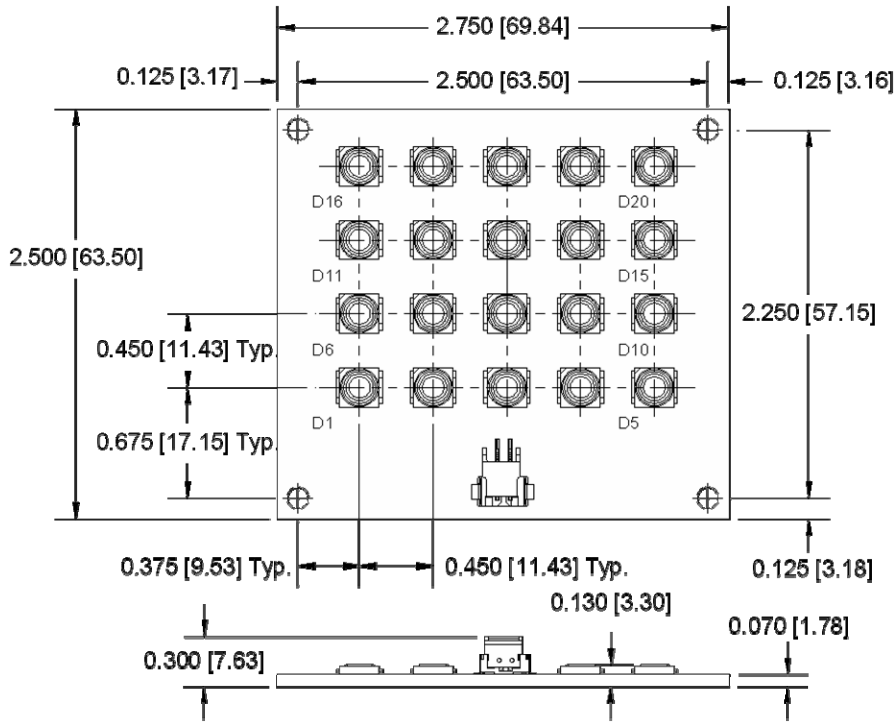


**DO NOT LOOK DIRECTLY AT LED WITH UNSHIELDED EYES OR DAMAGE TO RETINA MAY OCCUR.**

OPTEK reserves the right to make changes at any time in order to improve design and to supply the best product possible.

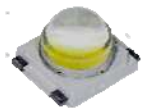
# OPA731 Series

## 20 Watt Light Flood on OptoTherm Linear Heat Spreader



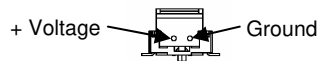
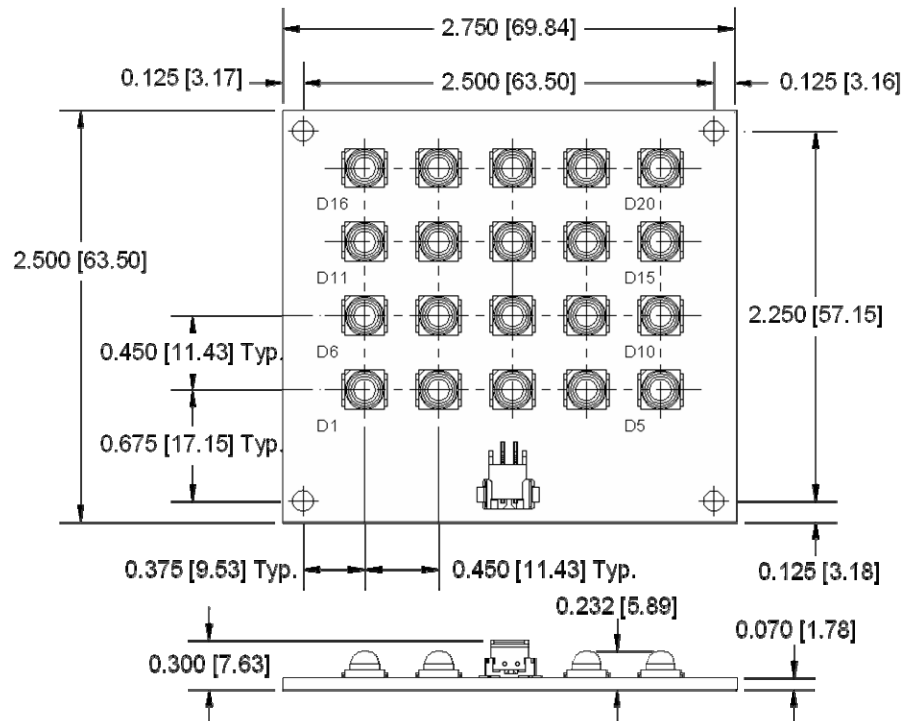
**OPA731\_**

See OVSP\_BCR4 for component specifications



**OPA731\_D**

See OVSP\_4CR44 for component specifications



OPTEK reserves the right to make changes at any time in order to improve design and to supply the best product possible.