



Chipsmall Limited consists of a professional team with an average of over 10 year of expertise in the distribution of electronic components. Based in Hongkong, we have already established firm and mutual-benefit business relationships with customers from,Europe,America and south Asia,supplying obsolete and hard-to-find components to meet their specific needs.

With the principle of “Quality Parts,Customers Priority,Honest Operation,and Considerate Service”,our business mainly focus on the distribution of electronic components. Line cards we deal with include Microchip,ALPS,ROHM,Xilinx,Pulse,ON,Everlight and Freescale. Main products comprise IC,Modules,Potentiometer,IC Socket,Relay,Connector.Our parts cover such applications as commercial,industrial, and automotives areas.

We are looking forward to setting up business relationship with you and hope to provide you with the best service and solution. Let us make a better world for our industry!



Contact us

Tel: +86-755-8981 8866 Fax: +86-755-8427 6832

Email & Skype: info@chipsmall.com Web: www.chipsmall.com

Address: A1208, Overseas Decoration Building, #122 Zhenhua RD., Futian, Shenzhen, China





REFLECTIVE OPTIC



FEATURES / BENEFITS

- ▲ Only 11.5mm (0.453") maximum diameter
- ▲ Ideal for tightly spaced LED arrays
- ▲ Adhesive backing for easy installation. Adhesive rated from -40°C to +120°C (-40°F to +248°F)
- ▲ Automatic alignment feature
- ▲ Spot & wide versions available for Luxeon Rebel LEDs
- ▲ Universal version suites Cree XPC, XPE, XPG and standard Rebel LEDs
- ▲ Adhesive is approved to ESK-M3G162, WSK-3G184-A4 (Ford motor) & RES22LA06 type 2 (Rover)

MECHANICAL DIMENSIONS

7° "Spot" model

11.5mm (0.453") top diameter

11.2mm (0.433") base diameter

10.0mm (0.249") height

13° "Wide" model

9.7mm (0.433") top diameter

11.2mm (0.433") base diameter

3.8mm (0.142") height

APPLICATIONS

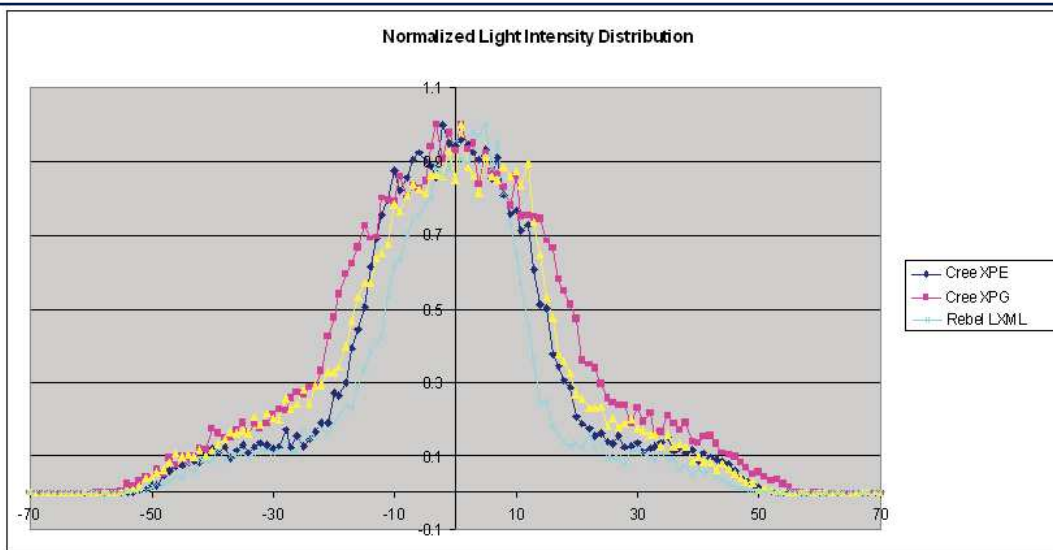
- ▲ Spot lighting
- ▲ Flood lighting
- ▲ Accent lighting
- ▲ RGB color mixing

ORDERING INFORMATION

Dialight P/N	Description	Degree*
OPC1-1-COL	7 degree "spot" model (Luxeon only)	7°
OPC1-2-COL	13 degree "wide" model (Luxeon only)	13°
OPC-REF-1-WD	Universal optic for: Cree - XPC, XPE, XPG Rebel	Refer to light intensity distribution chart

*Other colour options available (consult factory MOQ applies)
Dashes are for reference only

LIGHT INTENSITY DISTRIBUTION FOR OPC-REF-1-WD



The full-width at half-maximum emission angle is:

38 degree (+/-19 degree) for Cree XPG

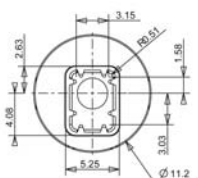
30 degree (+/-15 degree) for Cree XPE

23 degree (+/-11.5 degree) for Luxeon rebel LXLM

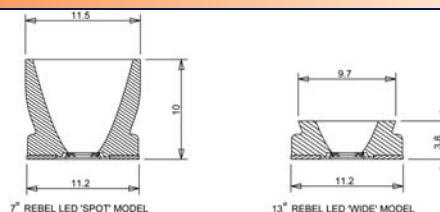
VIBRATION TESTING

Test	Standard/Test Method
Vibration	Class A alternating 60°C to 25°C Twenty 12 minute cycles 5 200 Hz @ 4.2 g 3 axes
Shock	10g 11 mS Terminal Peak Sawtooth 3 axes

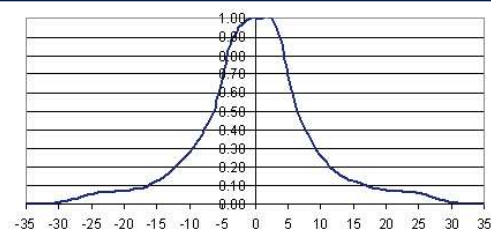
PCB ALIGNMENT DIMENSION DETAILS



MECHANICAL DIMENSIONS

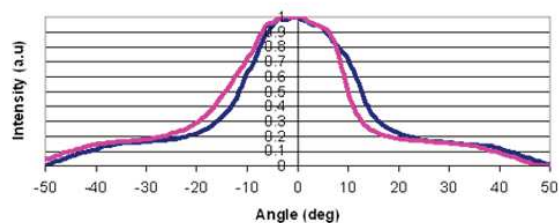


PHOTOMETRIC DATA



7° "Spot" model

Consult factory for IES files



13° "Wide" model