



Chipsmall Limited consists of a professional team with an average of over 10 year of expertise in the distribution of electronic components. Based in Hongkong, we have already established firm and mutual-benefit business relationships with customers from,Europe,America and south Asia,supplying obsolete and hard-to-find components to meet their specific needs.

With the principle of "Quality Parts,Customers Priority,Honest Operation,and Considerate Service",our business mainly focus on the distribution of electronic components. Line cards we deal with include Microchip,ALPS,ROHM,Xilinx,Pulse,ON,Everlight and Freescale. Main products comprise IC,Modules,Potentiometer,IC Socket,Relay,Connector.Our parts cover such applications as commercial,industrial, and automotives areas.

We are looking forward to setting up business relationship with you and hope to provide you with the best service and solution. Let us make a better world for our industry!



## Contact us

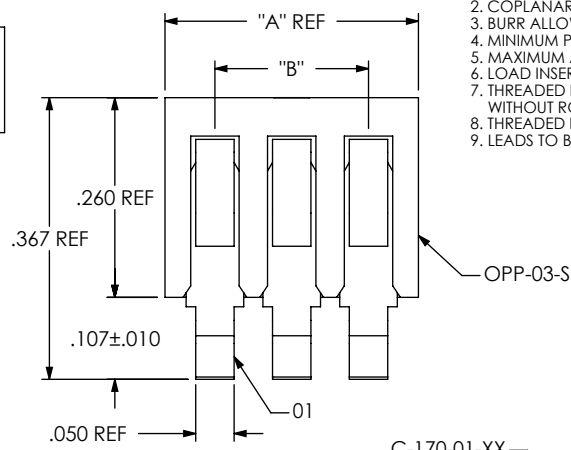
Tel: +86-755-8981 8866 Fax: +86-755-8427 6832

Email & Skype: info@chipsmall.com Web: www.chipsmall.com

Address: A1208, Overseas Decoration Building, #122 Zhenhua RD., Futian, Shenzhen, China



DO NOT SCALE FROM THIS PRINT



- NOTES:
1.  $\text{C}$  REPRESENTS A CRITICAL DIMENSION.
  2. COPLANARITY TO BE WITHIN .006.
  3. BURR ALLOWANCE: .0015 MAX.
  4. MINIMUM PUSHOUT FORCE: .5 LB.
  5. MAXIMUM ALLOWABLE BOW: .002 INCH/INCH AFTER ASSEMBLY.
  6. LOAD INSERTS IN DIRECTION OF THE ARROW; FLUSH TO .003" RECESSED.
  7. THREADED INSERT MUST BE ABLE TO HANDLE 20 in-oz's OF TORQUE MIN WITHOUT ROTATING OR "LOOSENING".
  8. THREADED INSERT RETENTION TO BE 7lbs. MIN.
  9. LEADS TO BE FLUSH TO .005 ABOVE THE BODY.

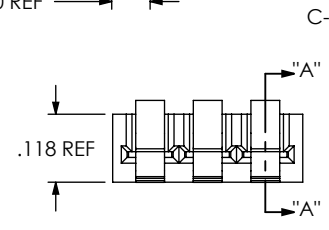
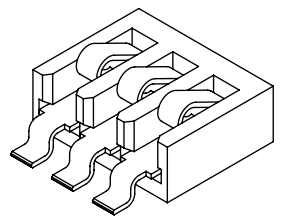
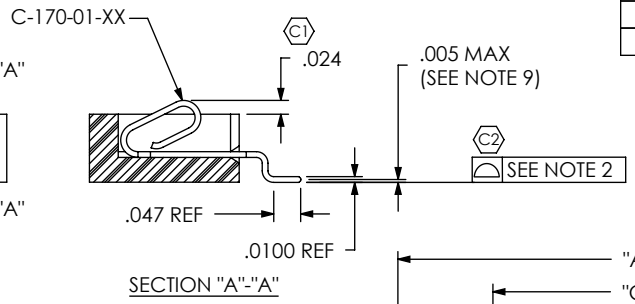


FIGURE 1  
(SHOWN: OPP-03-01-T-S)



PART NUMBER		
OPTION	INSERT	"B"
-E	INS-14-2-56-115	2 x 56
-M	INS-14-M2-115-N	M2.0 x4

FIGURE 3  
THREADED INSERT OPTION  
-M & -E: THREADED OPTIONS  
(SHOWN: OPP-03-01-XX-S-E)

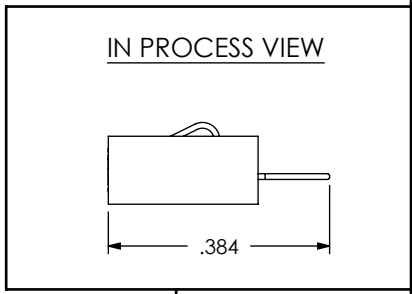


FIGURE 2  
ALIGNMENT PIN OPTIONS  
(SHOWN: OPP-03-01-XX-S-AD)

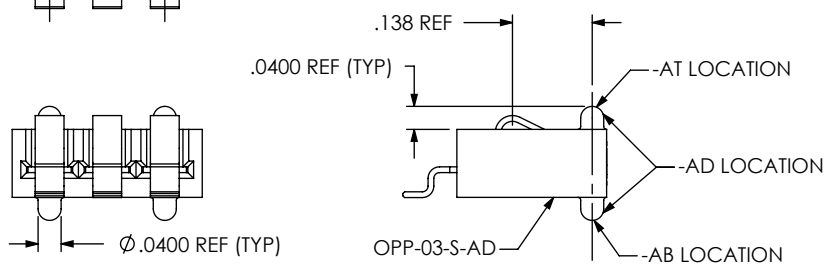
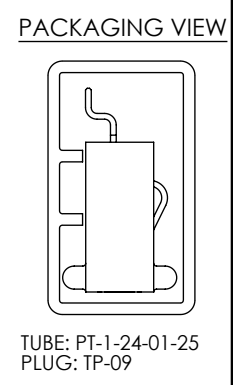
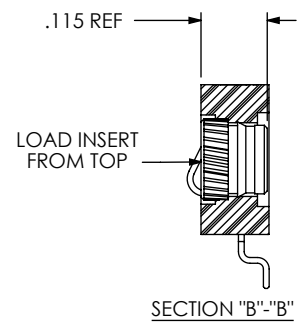
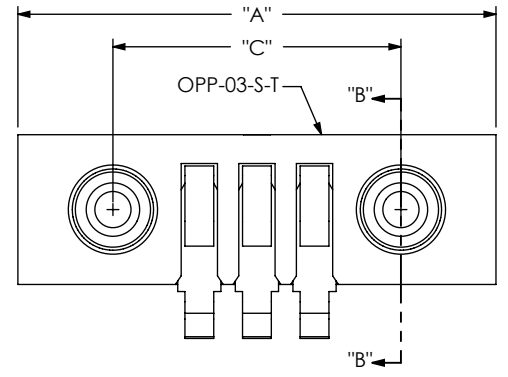
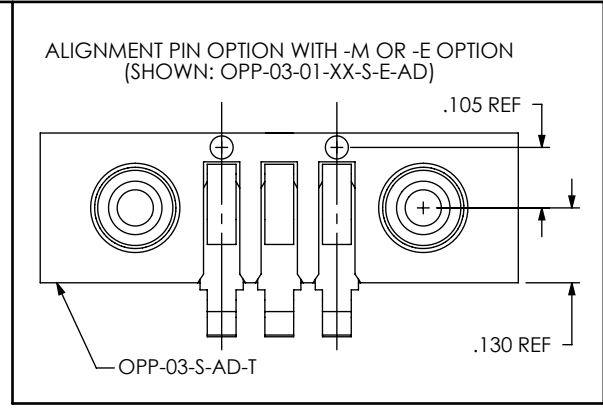
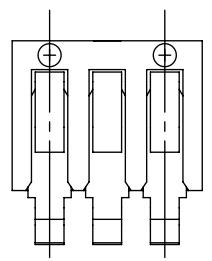


TABLE 1

NUMBER OF POSITIONS	"A" WITHOUT -E OR -M OPTION	"A" WITH -E OR -M OPTION	"B"	"C"
-03	0.330	0.830	0.200	0.500
-07	0.730	1.230	0.600	0.900
-10	1.030	1.530	0.900	1.200

UNLESS OTHERWISE SPECIFIED, DIMENSIONS ARE IN INCHES. TOLERANCES ARE:  
DECIMALS ANGLES  
.XX: ±.01 [.3] 2°  
.XXX: ±.005 [.13]  
.XXXX: ±.0020 [.051]

PROPRIETARY NOTE  
THIS DOCUMENT CONTAINS INFORMATION CONFIDENTIAL AND PROPRIETARY TO SAMTEC, INC. AND SHALL NOT BE REPRODUCED OR TRANSFERRED TO OTHER DOCUMENTS OR DISCLOSED TO OTHERS OR USED FOR ANY PURPOSE OTHER THAN THAT WHICH IT WAS OBTAINED WITHOUT THE EXPRESSED WRITTEN CONSENT OF SAMTEC, INC.



520 PARK EAST BLVD, NEW ALBANY, IN 47150  
PHONE: 812-944-6733 FAX: 812-948-5047  
e-Mail info@SAMTEC.com code 55322

MATERIAL: DO NOT SCALE DRAWING SHEET SCALE: 3:1  
INSULATOR: LCP, COLOR: BLACK  
CONTACT: BECU 17410

DESCRIPTION: ONE PIECE POWER ASSEMBLY  
DWG. NO. OPP-XX-01-XX-S-X-XX