



Chipsmall Limited consists of a professional team with an average of over 10 year of expertise in the distribution of electronic components. Based in Hongkong, we have already established firm and mutual-benefit business relationships with customers from,Europe,America and south Asia,supplying obsolete and hard-to-find components to meet their specific needs.

With the principle of “Quality Parts,Customers Priority,Honest Operation,and Considerate Service”,our business mainly focus on the distribution of electronic components. Line cards we deal with include Microchip,ALPS,ROHM,Xilinx,Pulse,ON,Everlight and Freescale. Main products comprise IC,Modules,Potentiometer,IC Socket,Relay,Connector.Our parts cover such applications as commercial,industrial, and automotives areas.

We are looking forward to setting up business relationship with you and hope to provide you with the best service and solution. Let us make a better world for our industry!



Contact us

Tel: +86-755-8981 8866 Fax: +86-755-8427 6832

Email & Skype: info@chipsmall.com Web: www.chipsmall.com

Address: A1208, Overseas Decoration Building, #122 Zhenhua RD., Futian, Shenzhen, China



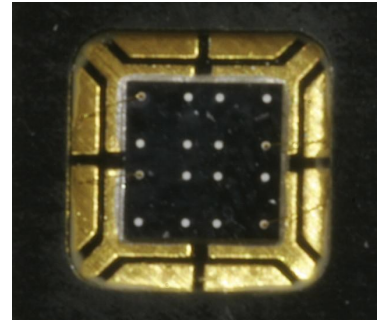
Surface Mount Quad Photodiode



OPR5911

Features:

- Surface mountable
- Closely matched responsivity
- High temperature operation
- Common cathode connections



Description:

Each OPR5911 device is a four-element photodiode that is enclosed in a compact polyimide chip carrier and designed for a variety of encoder and control applications. The single chip construction ensures excellent matching and very tight dimensional tolerances between active areas. The custom opaque package shields the photodiodes from stray light and can withstand multiple exposures to the most demanding soldering conditions, while the wraparound gold-plated solder pads offer exceptional storage and wetting characteristics.

All cathodes in the OPR5911 are bonded together, which enables the elements to act in unison with limited external circuitry.

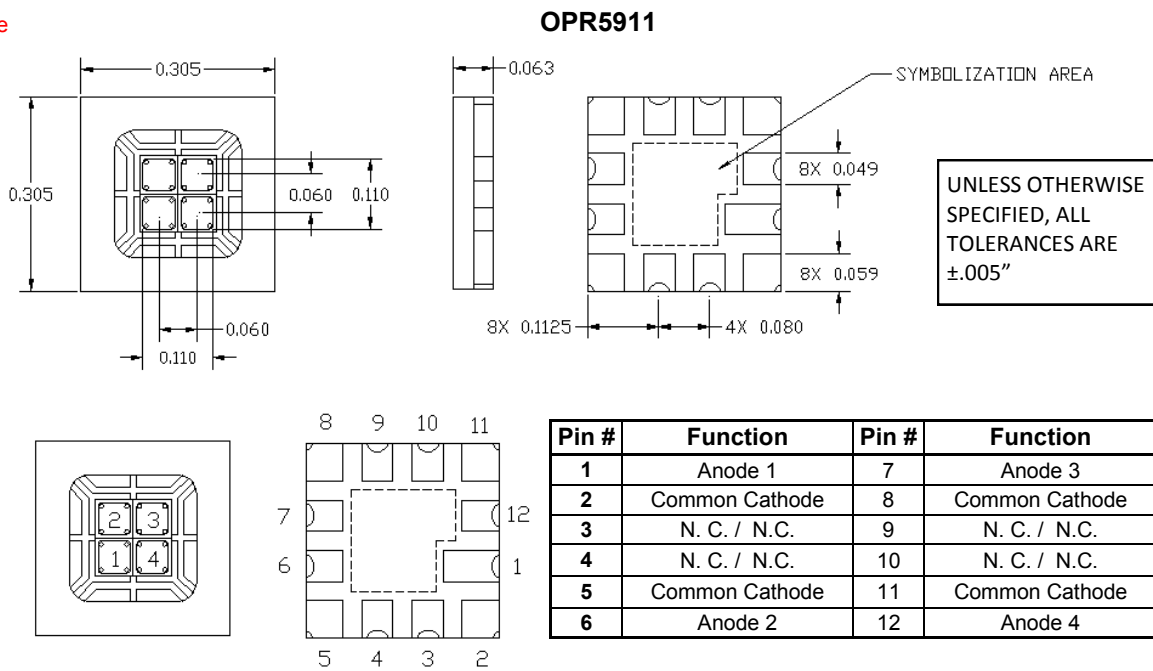
See Application Bulletin 237 for handling considerations.

Applications:

- Encoder applications
- Control applications

Ordering Information						
Part Number	Receiver Type	# of Elements	Responsivity (mA/mW) Min.	Reverse Voltage Min.	Active Area (mm ²)	Packaging
OPR5911	Photodiode Array	4	0.45	14	1.61 (each)	Chip Tray

Warning: Front Window is pressure sensitive. Do not apply pressure or high vacuum to window.



General Note

TT Electronics reserves the right to make changes in product specification without notice or liability. All information is subject to TT Electronics' own data and is considered accurate at time of going to print.

TT Electronics | Optek Technology, Inc.
 1645 Wallace Drive, Ste. 130, Carrollton, TX USA 75006 | Ph: +1 972 323 2200
www.ttelectronics.com | sensors@ttelectronics.com

Surface Mount Quad Photodiode



Electrical Specifications

Absolute Maximum Ratings ($T_A = 25^\circ\text{C}$ unless otherwise noted)

Storage and Operating Temperature	-55° C to +125° C
Reverse Breakdown Voltage	14 V / minute
Solder reflow time within 5°C of peak temperature is 20 to 40 seconds ⁽¹⁾	250° C

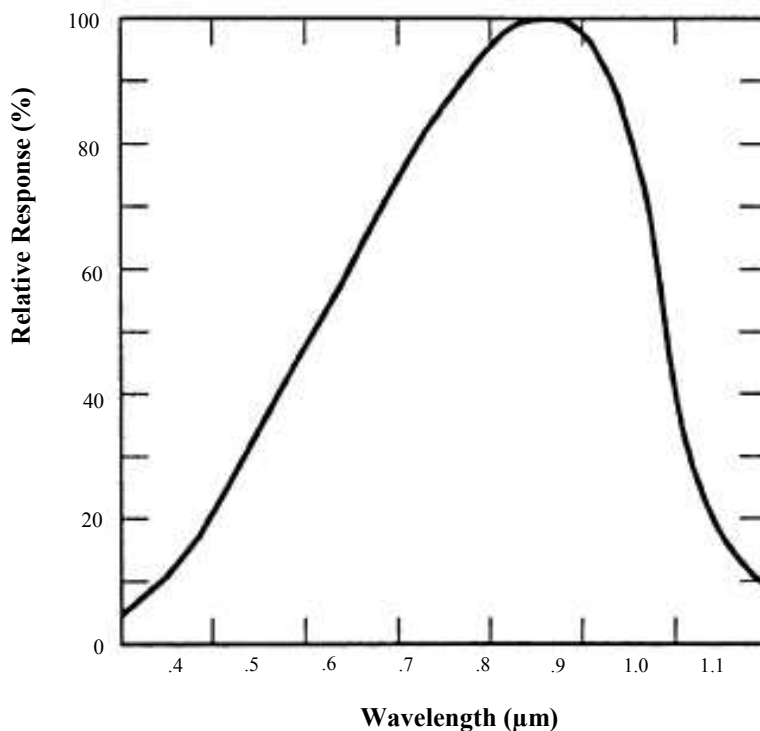
Electrical Characteristics ($T_A = 25^\circ\text{C}$ unless otherwise noted)

SYMBOL	PARAMETER	MIN	TYP	MAX	UNITS	TEST CONDITIONS
R	Responsivity	0.45	—	—	A/W	$E_e = 10\ \mu\text{W}$, $\lambda = 850\ \text{nm}$, $V_R = 0$
V_{BR}	Reverse Breakdown Voltage	14	—	—	V	$I_R = 100\ \mu\text{A}$
I_D	Reverse Dark Current	—	—	30	nA	$V_R = 10\ \text{V}$
C_T	Capacitance	—	10	—	pF	$V_R = 10\ \text{V}$
L X W	Active Area (per diode)	—	1.61	—	mm ²	(1.27 mm x 1.27 mm)

Notes:

1. Solder time less than 5 seconds at temperature extreme.

Spectral Responsivity



General Note

TT Electronics reserves the right to make changes in product specification without notice or liability. All information is subject to TT Electronics' own data and is considered accurate at time of going to print.

TT Electronics | Optek Technology, Inc.
 1645 Wallace Drive, Ste. 130, Carrollton, TX USA 75006 | Ph: +1 972 323 2200
www.ttelectronics.com | sensors@ttelectronics.com

Surface Mount Quad Photodiode

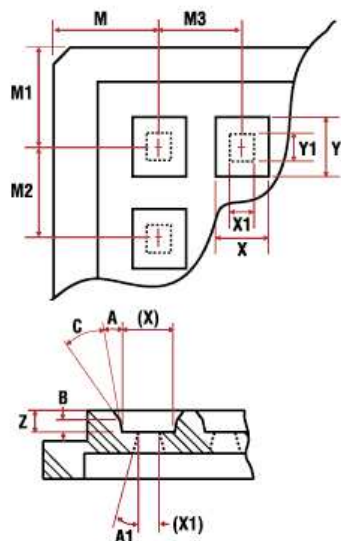


Packaging

Bare Die/CSP Tray Detail

H44-359-62C02

Dimensions



POCKET LOCATIONS

M	= 0.592" ±0.005"
M1	= 0.592" ±0.005"
M2	= 0.401" ±0.005"
M3	= 0.401" ±0.005"
Array	= 8x8 (64)

POCKET DETAILS

X	= 0.361" ±0.005" <i>pocket size</i>
Y	= 0.361" ±0.005" <i>pocket size</i>
Z	= 0.100" ±0.005" <i>pocket depth</i>
A	= 5° ±1/2° <i>pocket draft angle</i>

No Cross Slots

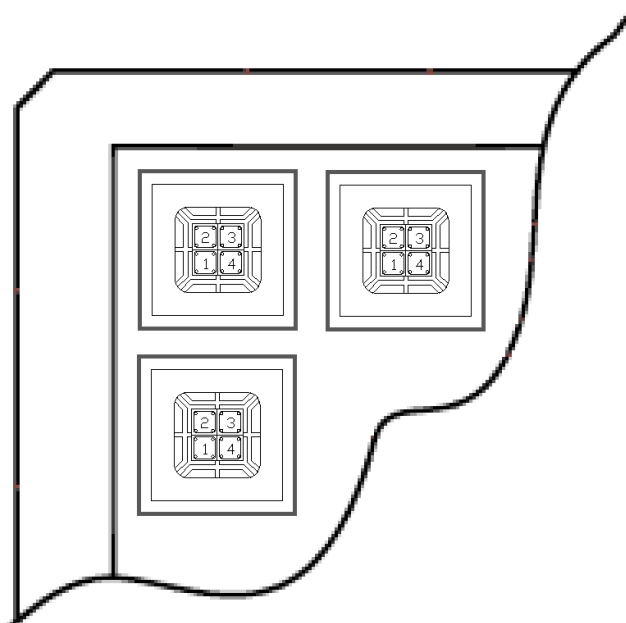
OVERALL TRAY SIZE

Size	= 3.990" ±0.010"
Height	= 0.315" +0.005" -0.005"
Flatness	= 0.020"

UNIT OF MEASURE

- English
- Metric

Orientation



General Note

TT Electronics reserves the right to make changes in product specification without notice or liability. All information is subject to TT Electronics' own data and is considered accurate at time of going to print.

TT Electronics | Optek Technology, Inc.
1645 Wallace Drive, Ste. 130, Carrollton, TX USA 75006 | Ph: +1 972 323 2200
www.ttelectronics.com | sensors@ttelectronics.com