



Chipsmall Limited consists of a professional team with an average of over 10 year of expertise in the distribution of electronic components. Based in Hongkong, we have already established firm and mutual-benefit business relationships with customers from,Europe,America and south Asia,supplying obsolete and hard-to-find components to meet their specific needs.

With the principle of “Quality Parts,Customers Priority,Honest Operation,and Considerate Service”,our business mainly focus on the distribution of electronic components. Line cards we deal with include Microchip,ALPS,ROHM,Xilinx,Pulse,ON,Everlight and Freescale. Main products comprise IC,Modules,Potentiometer,IC Socket,Relay,Connector.Our parts cover such applications as commercial,industrial, and automotives areas.

We are looking forward to setting up business relationship with you and hope to provide you with the best service and solution. Let us make a better world for our industry!



## Contact us

Tel: +86-755-8981 8866 Fax: +86-755-8427 6832

Email & Skype: [info@chipsmall.com](mailto:info@chipsmall.com) Web: [www.chipsmall.com](http://www.chipsmall.com)

Address: A1208, Overseas Decoration Building, #122 Zhenhua RD., Futian, Shenzhen, China

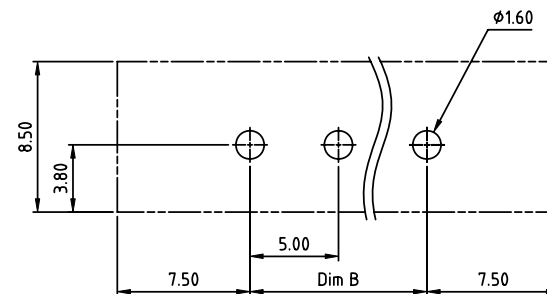
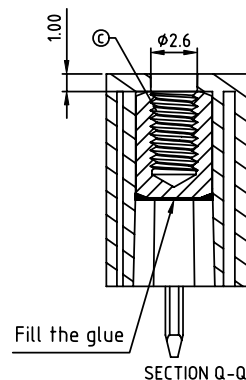
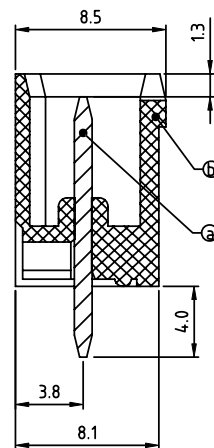
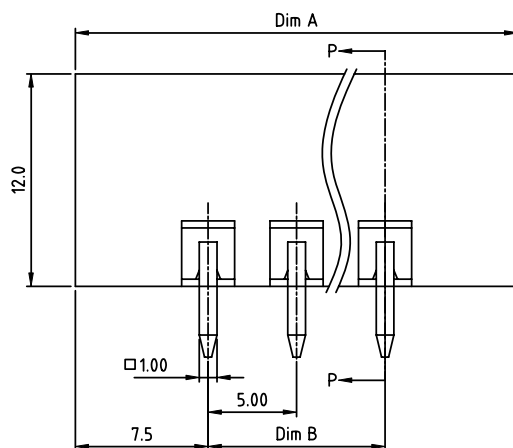
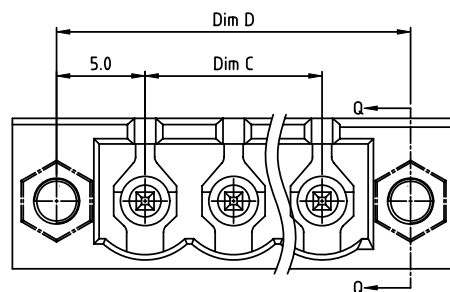


PRODUCT NUMBER

PITCH

0Qxx75x000J0G




5.00 mm


 RECOMMENDED P.C.B LAYOUT  
 TOP VIEW

Material:

- Item ③ Contact pin: Copper Tin plated
- Item ④ Terminal housing: Thermoplastic (UL94V-0)
- Item ⑤ Flange nut: Brass M2.5

Electrical: cULus /VDE /TUV

- Voltage rating: 300V/300V/300V
- Current rating: 20A/20A/20A
- Withstanding Voltage: 1.6 KV/2.5KV/2.5KV
- Operating temperature: -40°C to +115°C
- Soldering temperature: 260°C±5°C/5 Sec
- Safety Approval:   

## DIMENSION

Dim A	(N+2)×5.0
Dim B&C	(N-1)×5.0
Dim D	(N+1)×5.0

N= NUMBER OF POLES

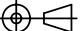

Poles	Tolerance
2P-6P	±0.15
7P-12P	±0.20
13P-18P	±0.25
19P-24P	±0.30

PART NO.: 0Q xx 7 5 x 0 00J0 G

 No. of poles  
 02 2 poles  
 03 3 poles  
 ...  
 24 24 poles

 Body Color  
 0 Black (RAL9005)  
 2 Red (RAL3001/D)  
 3 Orange(RAL2011/P)  
 4 Yellow(RAL1018/A)  
 5 Green(RAL6018/T)  
 6 Blue (RAL5015/A)  
 8 Grey(RAL7035/D)  
 9 White(RAL1102)  
 C Green(RAL6018/U)

 RoHS compliant  
 (lead<4%)  
 In copper Alloy

mat'l. code				surface ASME Y14.5✓		tolerance ASME Y14.5		projection 		product family TERMINAL BLOCK									
ltr		ecn no		dr		date		tolerances unless otherwise specified						title TERMINAL BLOCK					
								angles		linear		X.±0.5		MM		PLUGGABLE SOCKET, WITH FLANGE, VERTICAL			
												X.X±0.3							
								X*±1°				X.XX±0.1		scale		dwg no			
								dr		HANKE FENG		032814				sheet 1 of 1			
								enrg		HANKE FENG		032814				size			
								chr		SHI JUN		032814				A			
								appd		SHI JUN		032814				0Qxx75x000J0G			
sheet index		revision sheet		A		1										type			
																CUSTOMER Drawing			