



Chipsmall Limited consists of a professional team with an average of over 10 year of expertise in the distribution of electronic components. Based in Hongkong, we have already established firm and mutual-benefit business relationships with customers from,Europe,America and south Asia,supplying obsolete and hard-to-find components to meet their specific needs.

With the principle of “Quality Parts,Customers Priority,Honest Operation,and Considerate Service”,our business mainly focus on the distribution of electronic components. Line cards we deal with include Microchip,ALPS,ROHM,Xilinx,Pulse,ON,Everlight and Freescale. Main products comprise IC,Modules,Potentiometer,IC Socket,Relay,Connector.Our parts cover such applications as commercial,industrial, and automotives areas.

We are looking forward to setting up business relationship with you and hope to provide you with the best service and solution. Let us make a better world for our industry!



Contact us

Tel: +86-755-8981 8866 Fax: +86-755-8427 6832

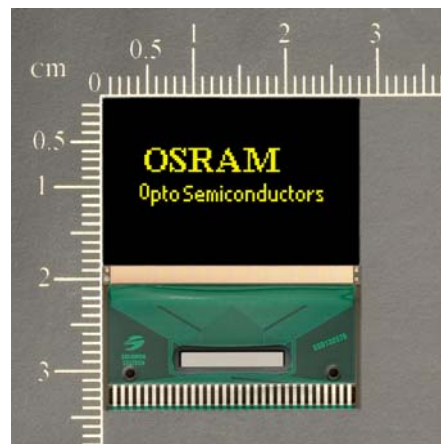
Email & Skype: info@chipsmall.com Web: www.chipsmall.com

Address: A1208, Overseas Decoration Building, #122 Zhenhua RD., Futian, Shenzhen, China



OLED DISPLAY SOLUTIONS

Pictiva™ 0.9-inch 80x48 OLED display



Features

- Long-lifetime OLED
- 180° viewing angle
- Fast response, video capable
- High contrast
- Wide operating temperature range

Benefits

- Ease of readability
- No backlight required
- Low power consumption

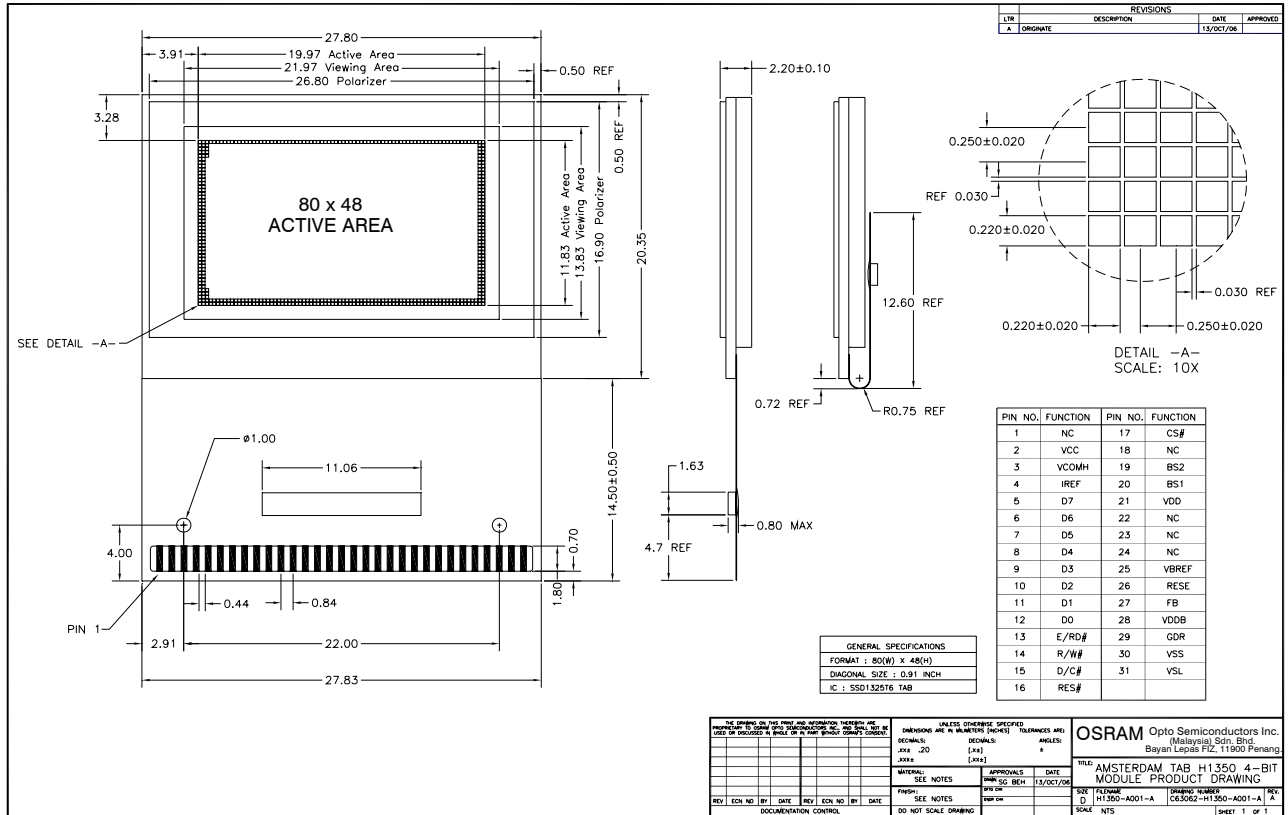
Applications

- Audio/Video
- Entertainment
- Industrial
- Medical
- Instruments

Specifications

Display Format	80 Columns x 48 Rows				
Diagonal	0.9 inch				
Pixel Pitch	0.250 (W) x 0.250 (H) mm				
Color, Luminance & lifetime	Color	CIE x	CIE y	Cd/m ²	Lifetime hrs, 25°C
	Elegance Yellow	0.46	0.54	100	40K
	Lime Green	0.37	0.62	120	10K
	Golden Orange	0.60	0.40	60	10K
Grayscale	4 bit				
Active Area	19.97 (W) X 11.83 (H) mm				
Module Size	27.80 (W) X 34.85 (H) X 2.20 mm (T)				
Viewing Angle	180°				
Contrast Ratio	2000:1 dark ambient				
Temperature	-30°C to 70°C				
Logic Voltage	2.4V – 3.5V				
Supply Voltage	12.5V				
Power Cons.	0.05 mW (sleep mode)				
Interface	Parallel/Serial				
Driver	SSD1325				
Weight	2.54g typical				

Mechanical Dimensions and Pin Description



Ordering Information

Part Number	Order Number	Description
OS080048PK09MY0B10	Q65110A5710	Pictiva™ 0.9 inch 80x48 OLED Display, Elegance Yellow
OS080048PK09MG1B10	Q65110A5706	Pictiva™ 0.9 inch 80x48 OLED Display, Lime Green
OS080048PK09MO2B10	Q65110A5704	Pictiva™ 0.9 inch 80x48 OLED Display, Golden Orange

Note:

All the above products are compliant with RoHS standards:

Lead (Pb) Free Product - EU RoHS Compliant
 - China RoHS Compliant



此产品不含铅，符合欧盟 RoHS 指令的要求；
 按照中国的相关法规和标准，不含有毒有害物质或元素。

Contact Information

OSRAM Opto Semiconductors

Asia : +60(0) 4 631-8100 prasia@osram-os.com
 Europe : +49(0) 941-850-3535 pr@osram-os.com
 North America : +1-888-446-7726 ext.4310 info@osram-os.com
 Web : www.pictiva.com