



Chipsmall Limited consists of a professional team with an average of over 10 year of expertise in the distribution of electronic components. Based in Hongkong, we have already established firm and mutual-benefit business relationships with customers from,Europe,America and south Asia,supplying obsolete and hard-to-find components to meet their specific needs.

With the principle of “Quality Parts,Customers Priority,Honest Operation,and Considerate Service”,our business mainly focus on the distribution of electronic components. Line cards we deal with include Microchip,ALPS,ROHM,Xilinx,Pulse,ON,Everlight and Freescale. Main products comprise IC,Modules,Potentiometer,IC Socket,Relay,Connector.Our parts cover such applications as commercial,industrial, and automotives areas.

We are looking forward to setting up business relationship with you and hope to provide you with the best service and solution. Let us make a better world for our industry!



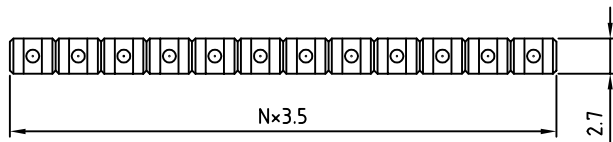
Contact us

Tel: +86-755-8981 8866 Fax: +86-755-8427 6832

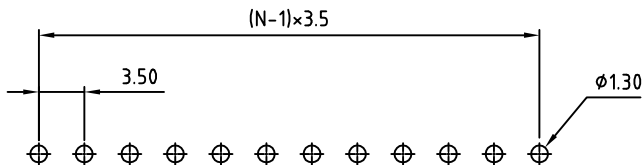
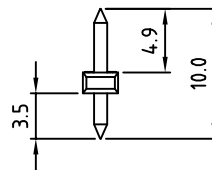
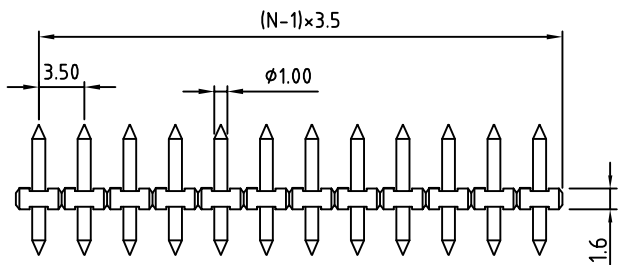
Email & Skype: info@chipsmall.com Web: www.chipsmall.com

Address: A1208, Overseas Decoration Building, #122 Zhenhua RD., Futian, Shenzhen, China





N = Number of contact




P.C.B. LAYOUT

SIGN	DATE	DESCRIPTION	APPROVER
THIS IS CAD DRAWING, DO NOT REVISE MANUALLY!!!			

Material:

- Solid PIN: Brass(CuZn)
- Surface of solder tail: Tin plated
- Insulator(housing): Thermoplastic (UL94 V-0)

Electrical:

- Voltage rating: 150V
- Current rating: 10A
- Withstanding Voltage: 1.3KV
- Operating temperature: -30°C to +105°C
- Soldering temperature: 260°C±10°C/5 Sec
- Safety Approval: 

RoHS Compliant

PART NUMBER:

OSTOPXX2B01


No. of Poles _____

02: 2 Poles

24: 24 Poles



THESE DRAWINGS AND SPECIFICATIONS ARE THE PROPERTY OF ON-SHORE TECHNOLOGY, INC. AND SHALL NOT BE REPRODUCED, COPIED OR USED IN ANY MANNER WITHOUT THE PRIOR WRITTEN CONSENT OF ON-SHORE TECHNOLOGY, INC.

TITLE		OSTOP 3.5mm Series 2p-24p					
PART NO.	OSTOPXX2B01				DWG NO.	OSTOPXX2B01.DWG	
APPROVED	CHECKED	DESIGNED	DRAWN	CUST NO.			Tolerance
Shi Jun 2006.10.23	Shi Jun 2006.10.23	Tony 2006.10.23	Tony 2006.10.23		UNIT: mm		X. ±0.50
					SCALE: NONE		X.X ±0.30
					REV: C		X° ±1°
				SHEET: 01/01			