



Chipsmall Limited consists of a professional team with an average of over 10 year of expertise in the distribution of electronic components. Based in Hongkong, we have already established firm and mutual-benefit business relationships with customers from,Europe,America and south Asia,supplying obsolete and hard-to-find components to meet their specific needs.

With the principle of "Quality Parts,Customers Priority,Honest Operation,and Considerate Service",our business mainly focus on the distribution of electronic components. Line cards we deal with include Microchip,ALPS,ROHM,Xilinx,Pulse,ON,Everlight and Freescale. Main products comprise IC,Modules,Potentiometer,IC Socket,Relay,Connector.Our parts cover such applications as commercial,industrial, and automotives areas.

We are looking forward to setting up business relationship with you and hope to provide you with the best service and solution. Let us make a better world for our industry!



Contact us

Tel: +86-755-8981 8866 Fax: +86-755-8427 6832

Email & Skype: info@chipsmall.com Web: www.chipsmall.com

Address: A1208, Overseas Decoration Building, #122 Zhenhua RD., Futian, Shenzhen, China



TYPICAL INDICATOR ORDERING EXAMPLE

P01

12

C

1

A

Lamps	
Incandescent	
06	6-volt
12	12-volt
18	18-volt
24	24-volt
28	28-volt
Neon	
N	110-volt

Cap Colors	
B	White
C	Red
D	Orange
E	Yellow
*F	Green
*G	Blue

*F & G not suitable with neon.

Bezels	
1	.787" (20.0mm) Wide
2	.937" (23.8mm) Wide

Bezel Colors	
A	Black
B	White
C	Red
D	Orange
E	Yellow
F	Green
G	Blue
H	Gray

DESCRIPTION FOR TYPICAL ORDERING EXAMPLE

P01-12-C-1A



Note: Wire harness & cable assemblies offered only in Americas

LAMP CODES & SPECIFICATIONS

Incandescent & Neon Lamps for Solid & Design Caps

AT602 Incandescent	AT602N Neon		06	12	18	24	28	N	
		Voltage	6V	12V	18V	24V	28V	110V	
		Current	80mA	50mA	35mA	25mA	22mA	1.5mA	
		MSCP	.159	.215	.398	.215	.247	NA	
		Endurance	2,000 Average					15,000 Avg.	
		Ambient Temperature Range	-10° ~ +50°C						
		Recommended Resistor for Neon: 33K ohms for 110V AC & 100K ohms for 220V AC							

T- 1 1/2 Pilot Slide Base

Electrical specifications are determined at a basic temperature of 25°C.

For dimension drawings of lamps, see Accessories & Hardware Index.

If the source voltage is greater than rated voltage, a ballast resistor is required.

The ballast resistor calculation and more lamp detail are shown in the Supplement section.

CAP COLORS

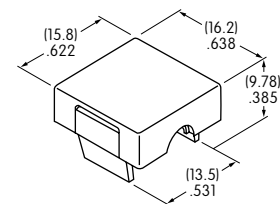
B White	D Orange	F Green
C Red	E Yellow	G Blue

Material: Polycarbonate

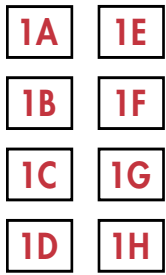
Finish: Glossy

F & G not suitable for neon

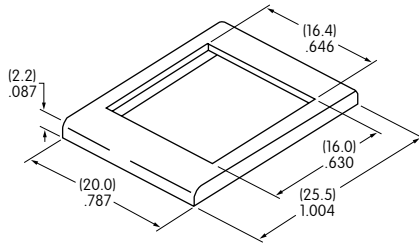
AT429



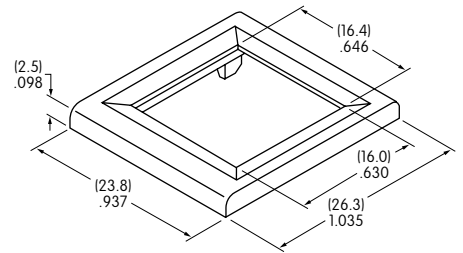
OPTIONAL BEZELS & COLORS



AT204
.787" (20.0mm) Wide Bezel



AT9201
.937" (23.8mm) Wide Bezel



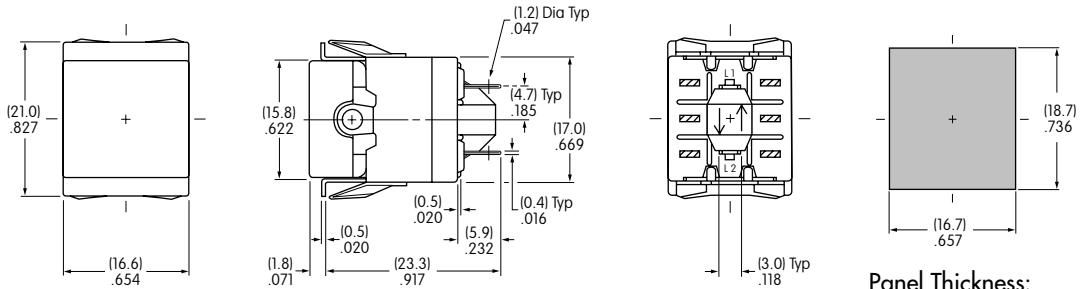
Material: Polycarbonate

Standard Finish: Glossy

Color Codes: A Black B White C Red D Orange E Yellow F Green G Blue H Gray

TYPICAL INDICATOR DIMENSIONS

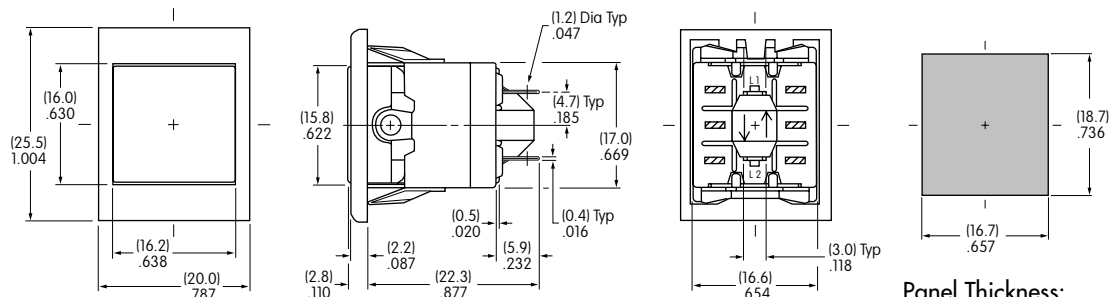
Without Bezel



P01-12-C

Panel Thickness:
 .039" ~ .157"
 (1.0mm ~ 4.0mm)

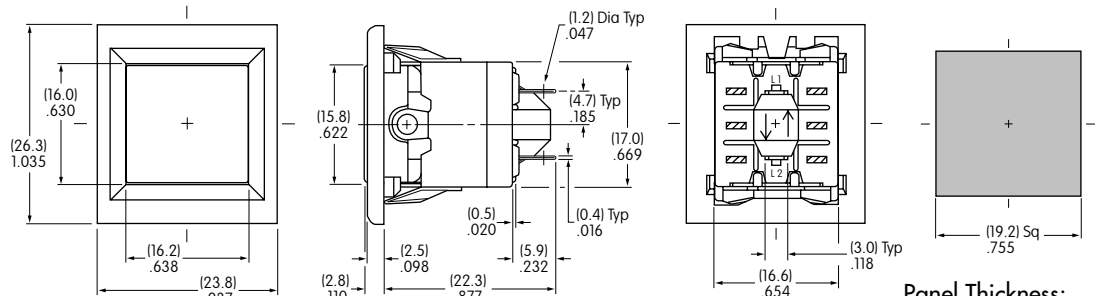
With Bezel



P01-12-C-1A

Panel Thickness:
 .039" ~ .157"
 (1.0mm ~ 4.0mm)

With Large Bezel



P01-12-C-2A

Panel Thickness:
 .039" ~ .157"
 (1.0mm ~ 4.0mm)

Toggles
Rockers
Pushbuttons
Illuminated PB
Programmable
Keylocks
Rotaries
Slides
Tactiles
Tilt
Touch
Indicators
Accessories
Supplement