



Chipsmall Limited consists of a professional team with an average of over 10 year of expertise in the distribution of electronic components. Based in Hongkong, we have already established firm and mutual-benefit business relationships with customers from,Europe,America and south Asia,supplying obsolete and hard-to-find components to meet their specific needs.

With the principle of “Quality Parts,Customers Priority,Honest Operation,and Considerate Service”,our business mainly focus on the distribution of electronic components. Line cards we deal with include Microchip,ALPS,ROHM,Xilinx,Pulse,ON,Everlight and Freescale. Main products comprise IC,Modules,Potentiometer,IC Socket,Relay,Connector.Our parts cover such applications as commercial,industrial, and automotives areas.

We are looking forward to setting up business relationship with you and hope to provide you with the best service and solution. Let us make a better world for our industry!



## Contact us

Tel: +86-755-8981 8866 Fax: +86-755-8427 6832

Email & Skype: info@chipsmall.com Web: www.chipsmall.com

Address: A1208, Overseas Decoration Building, #122 Zhenhua RD., Futian, Shenzhen, China

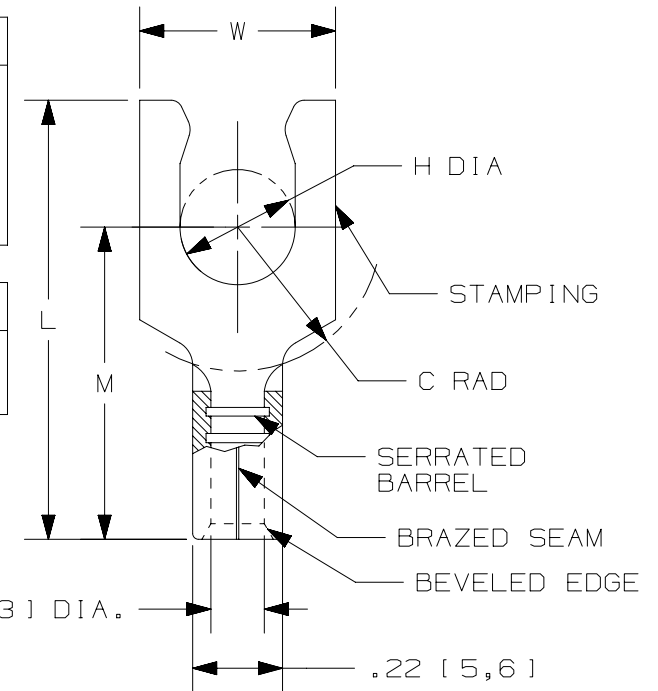


THIS COPY IS PROVIDED ON A RESTRICTED BASIS AND IS NOT TO BE USED IN ANY WAY DETRIMENTAL TO THE INTERESTS OF PANDUIT CORP.

PANDUIT PART #	STUD SIZE	DIMENSIONS in. [mm]				
		L ± .02 [0,5]	W ± .01 [0,3]	C ± .02 [0,5]	M ± .02 [0,5]	H ± .01 [0,3]
P10-6LF	#6	.77 [19,6]	.30 [7,6]	.23 [5,8]	.53 [13,5]	.14 [3,6]
P10-8LF	#8	.79 [20,1]	.30 [7,6]	.23 [5,8]	.53 [13,5]	.16 [4,1]
P10-10LF	#10	.79 [20,1]	.34 [8,6]	.23 [5,8]	.53 [13,5]	.19 [4,8]
P10-14LF	1/4"	.92 [23,4]	.46 [11,7]	.33 [8,4]	.63 [16,0]	.25 [6,4]

UL & CSA TOOLS
CT-100A
CT-200
CT-600-A (CT-570CH)
CT-1570
CT-1701 (P10)
CT-2500 (CT-2570CH)

PANDUIT APPROVED TOOLS
CT-160
CT-260



NOTES:

- UL LISTED & CSA CERTIFIED FOR:
  - #14-10 AWG [ 2,5-6,0 mm<sup>2</sup> ] SOLID OR STRANDED COPPER WIRE
  - 302°F [150°C] MAX OPERATING TEMPERATURE
  - 2000 VOLTS MAX
- SEE [www.panduit.com](http://www.panduit.com) FOR PACKAGE QUANTITIES
- MATERIAL:
  - STAMPING: .04" [1,0 ] THK COPPER, TIN PLATED
- DIMENSIONS IN BRACKETS ARE METRIC EQUIVALENT
- WIRE STRIP LENGTH:  $9/32" \begin{smallmatrix} +1/32 \\ -0 \end{smallmatrix}$  [7,1mm<sup>+0,8</sup><sub>-0</sub> ]



TITLE	
LOCKING FORK TERMINALS, NON- INSULATED, #14-10	
CUSTOMER DRAWING	
ITEM REVISION NAME	N41287BA/11
DATASET FILE NAME	N41287BA_DC/10A
UNLESS OTHERWISE SPECIFIED, DIMENSIONAL TOLERANCES ARE: IN [ mm ]	
.X ±	.XXX ±
.XX ±	ANGLES ±
THIRD ANGLE PROJECTION	
DRAWING NUMBER: A41287	
DRAWN BY	DAW
DATE	-
CHK	-
SCALE	N.T.S.
SHEET 1 OF 1	
SIZE	A

REV	DATE	BY	CHK	APR	DESCRIPTION	ECN
11	5/17	JHNU	TMR	RGB	ADDED CSA BACK TO DWG, UPDATED TOOL CHART FORMAT	N41287BA-A41287
10	06/14	MBY	JHNU	RGB	REVISED NOTES, MOVED TOOLS TO TABLE, REVISED CERTIFICATION	N41287BA-A41287
09	10/12	JBN	LSM	VMB	REVISED NOTES. UPDATED DRAWING TO CURRENT STANDARDS.	A41287

D10100DA/12