



Chipsmall Limited consists of a professional team with an average of over 10 year of expertise in the distribution of electronic components. Based in Hongkong, we have already established firm and mutual-benefit business relationships with customers from,Europe,America and south Asia,supplying obsolete and hard-to-find components to meet their specific needs.

With the principle of "Quality Parts,Customers Priority,Honest Operation,and Considerate Service",our business mainly focus on the distribution of electronic components. Line cards we deal with include Microchip,ALPS,ROHM,Xilinx,Pulse,ON,Everlight and Freescale. Main products comprise IC,Modules,Potentiometer,IC Socket,Relay,Connector.Our parts cover such applications as commercial,industrial, and automotives areas.

We are looking forward to setting up business relationship with you and hope to provide you with the best service and solution. Let us make a better world for our industry!



Contact us

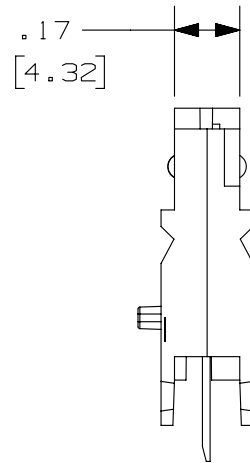
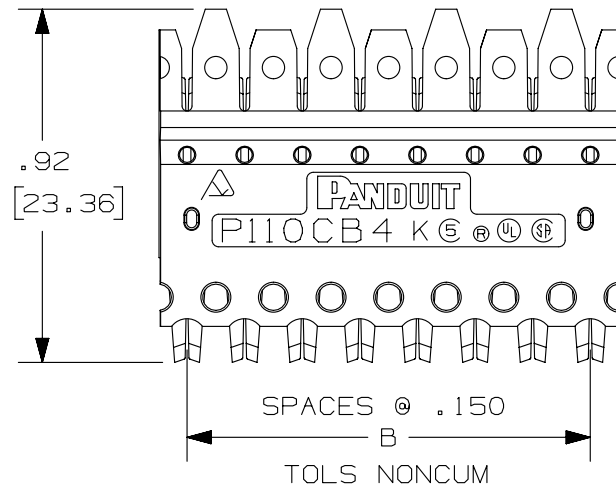
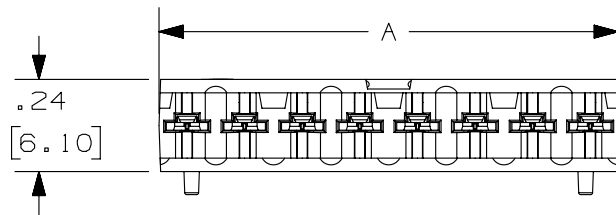
Tel: +86-755-8981 8866 Fax: +86-755-8427 6832

Email & Skype: info@chipsmall.com Web: www.chipsmall.com

Address: A1208, Overseas Decoration Building, #122 Zhenhua RD., Futian, Shenzhen, China



THIS COPY IS PROVIDED ON A RESTRICTED BASIS AND IS NOT TO BE USED IN ANY WAY DETRIMENTAL TO THE INTERESTS OF PANDUIT CORP.



NOTES:

- *1. SEE CURRENT CATALOG FOR ADDITIONAL PART NUMBER SUFFIXES TO INDICATE COLOR AND OR PACKAGE QUANTITY.
2. SEE CATALOG FOR COMPLETE LIST OF PARTS APPLICABLE FOR USE WITH THIS PART.
3. DIMENSIONS IN PARENTHESES ARE IN METRIC.
4. CATEGORY 5E PERFORMANCE CONNECTOR.
5. INSTALLATION TOOL REQUIRED TO INSTALL BLOCK ONTO BASE.



PART NUMBER	PAIRS	DIM. A	DIM. B	WEIGHT
P110CB3-*Y	3	0.896	0.750	.057 LB/10 PCS (26.3g/10 PCS)
P110CB4-*Y	4	1.196	1.050	.083 LB/10 PCS (37.9g/10 PCS)
P110CB5-*Y	5	1.496	1.350	.104 LB/10 PCS (47.3g/10 PCS)



PART NUMBER		P110CB* - *Y		
TITLE				
PAN PUNCH CATEGORY 5E 110 CONNECTING BLOCK				
CUSTOMER DRAWING				
ITEM REVISION NAME		M02479KG/00		
DATASET FILE NAME		M02479KG_DC268/00B		
UNLESS OTHERWISE SPECIFIED, DIMENSIONAL TOLERANCES ARE: IN (mm)		MATERIAL:		
.x ±		.xxx ± .010 (.3)		
.xx ± .03 (.8)		ANGLES ±		
DRAWING NUMBER:		02479-268		
DRAWN BY		DATE	CHK	SCALE
NER		3-20-06	WJC	2:1
SHT 1 OF 1		SIZE		
SHT 1 OF 1		A		

REV	DATE	BY	CHK	APR	DESCRIPTION	ECN
1	5-28-14	MDJR	REFR	MMR	C. REMOVED TABLE. B. REMOVED NOTE 6. A. UPDATED TITLE BLOCK.	02479-268
R	3-20-06	NER	WJC	RMD	RELEASED TO PRODUCTION	02479-268

D10100DA/14