



Chipsmall Limited consists of a professional team with an average of over 10 year of expertise in the distribution of electronic components. Based in Hongkong, we have already established firm and mutual-benefit business relationships with customers from,Europe,America and south Asia,supplying obsolete and hard-to-find components to meet their specific needs.

With the principle of "Quality Parts,Customers Priority,Honest Operation,and Considerate Service",our business mainly focus on the distribution of electronic components. Line cards we deal with include Microchip,ALPS,ROHM,Xilinx,Pulse,ON,Everlight and Freescale. Main products comprise IC,Modules,Potentiometer,IC Socket,Relay,Connector.Our parts cover such applications as commercial,industrial, and automotives areas.

We are looking forward to setting up business relationship with you and hope to provide you with the best service and solution. Let us make a better world for our industry!



## Contact us

Tel: +86-755-8981 8866 Fax: +86-755-8427 6832

Email & Skype: info@chipsmall.com Web: www.chipsmall.com

Address: A1208, Overseas Decoration Building, #122 Zhenhua RD., Futian, Shenzhen, China



# Customer Information Sheet

DRAWING No.: P1113XX3

SHEET 2 OF 2

IF IN DOUBT - ASK



NOT TO SCALE

THIRD ANGLE PROJECTION

ALL DIMENSIONS IN mm

**SPECIFICATIONS:**

**MATERIAL:**

PLUNGER = P1113CA3, P1113CV3 = BRASS  
 P1113SS3 = HIGH CARBON STEEL

BARREL = BRASS  
 SPRING = SPRING STEEL

**FINISH:**

PLUNGER = P1113CA3, P1113CV3 = 0.25µ MIN GOLD  
 P1113SS3 = 2.00µ MIN NICKEL

BARREL = 0.25µ MIN GOLD  
 SPRING = GOLD PLATED

**ELECTRICAL:**

CURRENT RATING = 2A MAX  
 CONTACT RESISTANCE = 50mΩ MAX

**MECHANICAL:**

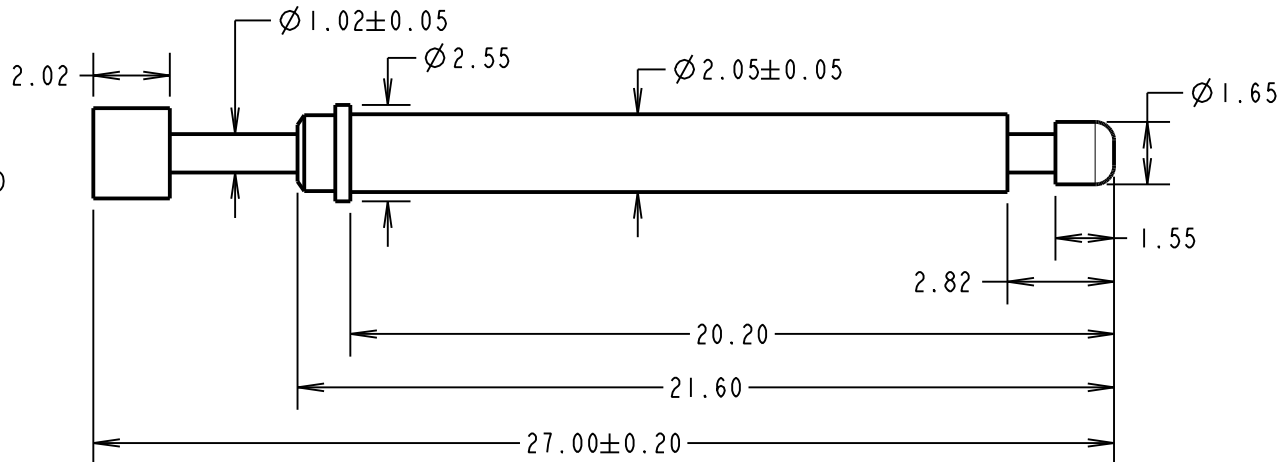
DURABILITY = 1,000,000 CYCLES  
 FULL TRAVEL = 3.18mm

**SPRING FORCE:**

FULL TRAVEL = 0.75 ± 0.25N  
 2.20mm TRAVEL = 0.54 ± 0.15N

**ENVIRONMENTAL:**

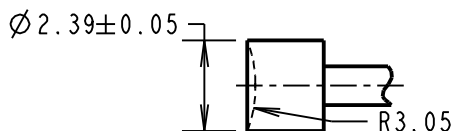
TEMPERATURE RANGE = -40°C TO +85°C



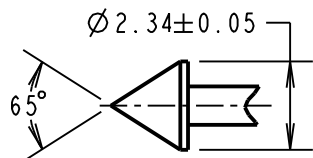
**NOTES:**

1. RECOMMENDED CLEARANCE HOLE SIZE =  $\varnothing 2.20 \pm 0.05$ mm.  
 RECOMMENDED INTERFERENCE HOLE SIZE =  $\varnothing 2.00$ mm.
2. SUITABLE FOR A MINIMUM DISTANCE BETWEEN CENTRES OF 3.00mm.
3. THIS PART IS SIMILAR TO P1113XX2 APART FROM POWER RATING THAT WAS 5A MAX AND MATERIAL / FINISH OF SPRING AND PLUNGER VARIANT P1113SS3.

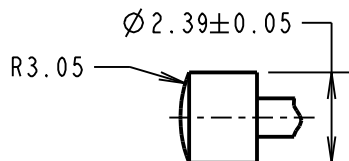
**PROBE HEAD VARIANTS**



CONCAVE RADIUS HEAD  
**P1113CA3**



CONVEX HEAD  
**P1113SS3**



CONVEX RADIUS HEAD  
**P1113CV3**

ORDER CODE:  
**P1113XX3**  
 PROBE HEAD  
 VARIANT (SEE BELOW)

MSP	5	18.01.16	13135
NAME	ISS.	DATE	C/NOTE
APPROVED: M.PERREN			
CHECKED: M.PLESTED			
DRAWN: M. G. PLESTED			
CUSTOMER REF.:			
ASSEMBLY DRG:			



www.harwin.com  
 technical@harwin.com

THIS DRAWING AND ANY INFORMATION OR DESCRIPTIVE MATTER SET OUT HEREON ARE CONFIDENTIAL AND COPYRIGHT PROPERTY OF THE HARWIN GROUP AND MUST NOT BE DISCLOSED, LOANED, COPIED OR USED FOR MANUFACTURING, TENDERING OR FOR ANY OTHER PURPOSE WITHOUT THEIR WRITTEN PERMISSION.

**TOLERANCES**  
 X. = ±1mm  
 X.X = ±0.50mm  
 X.XX = ±0.10mm  
 X.XXX = ±0.01mm  
**ANGLES = ±5°**  
 UNLESS STATED

**MATERIAL:**

SEE ABOVE

**FINISH:** SEE ABOVE

**S/AREA:** mm<sup>2</sup>

**TITLE:**

3.00mm MIN. CENTRE  
 ONE-PIECE SPRING PROBE

**DRAWING NUMBER:**

**P1113XX3**

SHT  
 2 OF 2