



Chipsmall Limited consists of a professional team with an average of over 10 year of expertise in the distribution of electronic components. Based in Hongkong, we have already established firm and mutual-benefit business relationships with customers from,Europe,America and south Asia,supplying obsolete and hard-to-find components to meet their specific needs.

With the principle of "Quality Parts,Customers Priority,Honest Operation,and Considerate Service",our business mainly focus on the distribution of electronic components. Line cards we deal with include Microchip,ALPS,ROHM,Xilinx,Pulse,ON,Everlight and Freescale. Main products comprise IC,Modules,Potentiometer,IC Socket,Relay,Connector.Our parts cover such applications as commercial,industrial, and automotives areas.

We are looking forward to setting up business relationship with you and hope to provide you with the best service and solution. Let us make a better world for our industry!



## Contact us

Tel: +86-755-8981 8866 Fax: +86-755-8427 6832

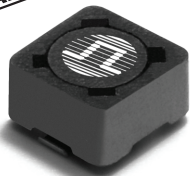
Email & Skype: info@chipsmall.com Web: www.chipsmall.com





Address: A1208, Overseas Decoration Building, #122 Zhenhua RD., Futian, Shenzhen, China



# SMT POWER INDUCTORS

## Shielded Drum Core - P1167NL Series



-  **Height:** 4.8mm Max
-  **Footprint:** 7.5mm x 7.5mm Max
-  **Current Rating:** up to 3.5A
-  **Inductance Range:** 1.8 $\mu$ H to 750 $\mu$ H

### Electrical Specifications @ 25°C — Operating Temperature -40°C to +130°C

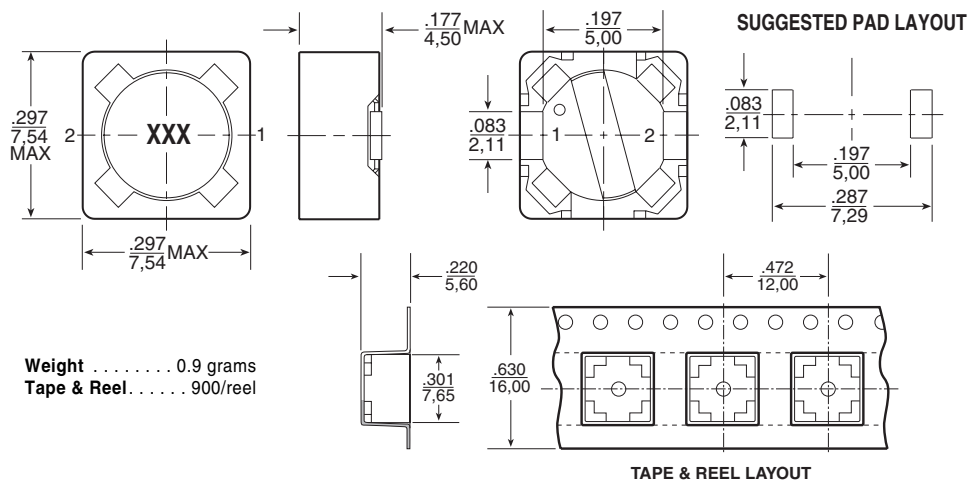
Part # <sup>2,3</sup> Number	Inductance @0A <sub>DC</sub> ( $\mu$ H $\pm$ 20%)	Inductance @I <sub>rated</sub> ( $\mu$ H) MIN	I <sub>rated</sub> <sup>5</sup> (A <sub>DC</sub> )	DCR (m $\Omega$ )		Saturation Current <sup>6</sup> -25% (A)	Heating <sup>7</sup> Current +40°C (A)	Core Loss <sup>8</sup> Factor (K2)	SRF (MHz)
				TYP	MAX				
P1167.272NL	2.7*	1.8	3.5	13	16	3.5	3.6	590	>40
P1167.362NL	3.6*	2.3	3.1	15	20	3.1	3.4	690	>40
P1167.452NL	4.5*	2.9	2.6	25	30	2.9	2.6	770	>40
P1167.542NL	5.4*	3.5	2.5	27	33	2.7	2.5	840	>40
P1167.632NL	6.3*	4.1	2.4	30	35	2.5	2.4	900	36
P1167.103NL	10	7.5	2.0	42	50	2.1	2.0	1100	26
P1167.123NL	12	9.0	1.9	46	57	1.9	1.9	1200	24
P1167.153NL	15	11.3	1.7	53	66	1.7	1.8	1300	20
P1167.183NL	18	13.5	1.5	59	73	1.5	1.7	1400	18
P1167.223NL	22	16.5	1.4	87	105	1.4	1.4	1700	17
P1167.273NL	27	20.3	1.2	100	130	1.2	1.3	1800	15
P1167.333NL	33	24.8	1.1	139	170	1.1	1.1	2000	13
P1167.393NL	39	29.3	1.0	156	200	1.0	1.0	2200	12
P1167.473NL	47	35.3	0.94	173	220	0.94	1.0	2400	10
P1167.563NL	56	42	0.86	225	270	0.86	0.86	2600	9.2
P1167.683NL	68	51	0.78	251	310	0.78	0.81	2900	8.8
P1167.823NL	82	61.5	0.7	282	350	0.7	0.77	3200	8.0
P1167.104NL	100	75	0.63	317	390	0.63	0.72	3500	6.2
P1167.124NL	120	90	0.57	418	530	0.57	0.63	3900	6.1
P1167.154NL	150	113	0.52	497	610	0.52	0.58	4300	5.6
P1167.184NL	180	135	0.47	635	820	0.47	0.51	4800	4.5
P1167.224NL	220	165	0.43	745	930	0.43	0.47	5200	4.3
P1167.274NL	270	203	0.39	840	1040	0.39	0.44	5700	3.8
P1167.334NL	330	248	0.35	1162	1470	0.35	0.38	6400	3.0
P1167.394NL	390	293	0.32	1237	1570	0.32	0.37	6900	2.8
P1167.474NL	470	353	0.29	1688	2180	0.29	0.31	7600	2.6
P1167.564NL	560	420	0.26	2240	2960	0.26	0.27	8300	2.4
P1167.684NL	680	510	0.23	2402	3180	0.23	0.26	9300	2.1
P1167.824NL	820	615	0.21	2702	3500	0.21	0.25	10000	2.0
P1167.105NL	1000	750	0.19	3703	4930	0.19	0.21	11000	1.8

\*Inductance at 0A<sub>DC</sub> tolerance on indicated part numbers is  $\pm$ 30%; tolerance is  $\pm$ 20% on all other parts.

NOTES FROM TABLE: (See page 43)

### Mechanical

### Schematic



# SMT POWER INDUCTORS

## Shielded Drum Core Series



### Notes from Tables (pages 27 - 42)

1. Unless otherwise specified, all testing is made at 100kHz, 0.1VAC.
2. Optional Tape & Reel packaging can be ordered by adding a "T" suffix to the part number (i.e. P1166.102NL becomes P1166.102NLT). Pulse complies with industry standard Tape and Tape & Reel specification EIA481.
3. The "NL" suffix indicates an RoHS-compliant part number. Non-NL suffixed parts are not necessarily RoHS compliant, but are electrically and mechanically equivalent to NL versions. If a part number does not have the "NL" suffix, but an RoHS compliant version is required, please contact Pulse for availability.
4. Temperature of the component (ambient plus temperature rise) must be within specified operating temperature range.
5. The rated current (I<sub>rated</sub>) as listed is either the saturation current or the heating current depending on which value is lower.
6. The saturation current, I<sub>sat</sub>, is the current at which the component inductance drops by the indicated percentage (typical) at an ambient temperature of 25°C. This current is determined by placing the component in the specified ambient environment and applying a short duration pulse current (to eliminate self-heating effects) to the component.
7. The heating current, I<sub>dc</sub>, is the DC current required to raise the component temperature by the indicated delta (approximately). The heating current is determined by mounting the component on a typical PCB and applying current for 30 minutes. The temperature is measured by placing the thermocouple on top of the unit under test.

8. In high volt\*time (Et) or ripple current applications, additional heating in the component can occur due to core losses in the inductor which may necessitate derating the current in order to limit the temperature rise of the component. In order to determine the approximate total loss (or temperature rise) for a given application, both copper losses and core losses should be taken into account.

### Estimated Temperature Rise:

$$\text{Trise} = [\text{Total loss (mW)} / K0]^{.833} (\text{°C})$$

$$\text{Total loss} = \text{Copper loss} + \text{Core loss (mW)}$$

$$\text{Copper loss} = I_{\text{RMS}}^2 \times \text{DCR (Typical)} \text{ (mW)}$$

$$I_{\text{rms}} = [I_{\text{DC}}^2 + \Delta I^2/12]^{1/2} \text{ (A)}$$

$$\text{Core loss} = K1 \times f \text{ (kHz)}^{1.23} \times B_{\text{ac}}(\text{Ga})^{2.38} \text{ (mW)}$$

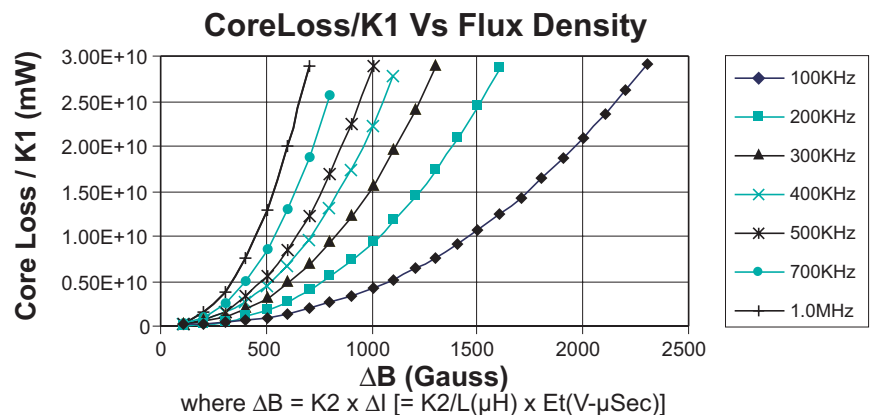
$$B_{\text{ac}} \text{ (peak to peak flux density)} = K2 \times \Delta I \text{ (Ga)}$$

$$[= K2/L(\mu\text{H}) \times Et(\text{V}\cdot\mu\text{Sec}) \text{ (Ga)}]$$

where f varies between 25kHz and 1MHz, and B<sub>ac</sub> is less than 2500 Gauss.

K2 is a core size and winding dependant value and is given for each p/n in the proceeding datasheets. K0 & K1 are platform and material dependant constants and are given in the table below for each platform.

Part No.	Trise Factor (K0)	Core Loss Factor (K1)
PG0085/86	2.3	5.29E-10
PG0087	5.8	15.2E-10
PG0040/41	0.8	2.80E-10
P1174	0.8	6.47E-10
PF0601	4.6	14.0E-10
PF0464	3.6	24.7E-10
PF0465	3.6	33.4E-10
P1166	1.9	29.6E-10
P1167	2.1	42.2E-10
PF0560NL	5.5	136E-10
P1168/69	4.8	184E-10
P1170/71	4.3	201E-10
P1172/73	5.6	411E-10
PF0552NL	8.3	201E-10
PF0553NL	7.1	411E-10



Take note that the component's temperature rise varies depending on the system condition. It is suggested that the component be tested at the system level, to verify the temperature rise of the component during system operation.