



Chipsmall Limited consists of a professional team with an average of over 10 year of expertise in the distribution of electronic components. Based in Hongkong, we have already established firm and mutual-benefit business relationships with customers from,Europe,America and south Asia,supplying obsolete and hard-to-find components to meet their specific needs.

With the principle of “Quality Parts,Customers Priority,Honest Operation,and Considerate Service”,our business mainly focus on the distribution of electronic components. Line cards we deal with include Microchip,ALPS,ROHM,Xilinx,Pulse,ON,Everlight and Freescale. Main products comprise IC,Modules,Potentiometer,IC Socket,Relay,Connector.Our parts cover such applications as commercial,industrial, and automotives areas.

We are looking forward to setting up business relationship with you and hope to provide you with the best service and solution. Let us make a better world for our industry!



## Contact us

Tel: +86-755-8981 8866 Fax: +86-755-8427 6832

Email & Skype: info@chipsmall.com Web: www.chipsmall.com

Address: A1208, Overseas Decoration Building, #122 Zhenhua RD., Futian, Shenzhen, China



THIS COPY IS PROVIDED ON A RESTRICTED BASIS AND IS NOT TO BE USED IN ANY WAY DETRIMENTAL TO THE INTERESTS OF PANDUIT CORP.

PANDUIT PART #	STUD SIZE		DIMENSIONS in. [mm]				
	ENGLISH	METRIC	L ± .03 [0,8]	W ± .01 [0,3]	C ± .02 [0,5]	M ± .03 [0,8]	H ± .01 [0,3]
PM2-3F*	--	M3	.63 [16,00]	.23 [5,84]	.22 [5,59]	.49 [12,45]	.13 [3,30]
P14-6F	#6	M3,5	.63 [16,00]	.28 [7,11]	.20 [5,08]	.49 [12,45]	.15 [3,81]
P14-6FN	#6	M3,5	.63 [16,00]	.24 [6,10]	.20 [5,08]	.49 [12,45]	.15 [3,81]
P14-8F	#8	M4	.69 [17,53]	.31 [7,87]	.23 [5,84]	.53 [13,46]	.17 [4,32]
P14-10F	#10	--	.71 [18,03]	.34 [8,64]	.25 [6,35]	.55 [13,97]	.20 [5,08]
P14-10FN	#10	--	.71 [18,03]	.31 [7,87]	.25 [6,35]	.55 [13,97]	.20 [5,08]
PM2-5F*	--	M5	.71 [18,03]	.34 [8,64]	.27 [6,86]	.55 [13,97]	.21 [5,33]
P14-14F	1/4"	M6	.88 [22,35]	.44 [11,18]	.33 [8,38]	.63 [16,00]	.27 [6,86]

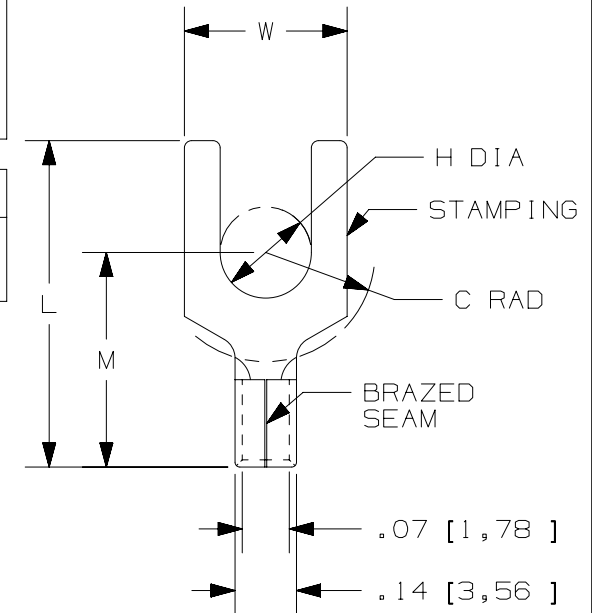
\*NOT CSA CERTIFIED

NOTES:

- UL LISTED & CSA CERTIFIED FOR:
  - #18-14 AWG [ 1,0-2,5 mm<sup>2</sup> ] SOLID OR STRANDED COPPER WIRE
  - 302°F [150°C] MAX OPERATING TEMPERATURE
  - 2000 VOLTS MAX
- SEE WWW.PANDUIT.COM FOR PACKAGE QUANTITIES
- MATERIAL:
  - STAMPING: .032" [0,8] THK COPPER, TIN PLATED
- DIMENSIONS IN BRACKETS ARE METRIC EQUIVALENT
- WIRE STRIP LENGTH: 9/32" <sup>+1/32</sup>/<sub>-0</sub> [7,1mm <sup>+0,8</sup>/<sub>-0</sub> ]

UL & CSA TOOLS
CT-100A CT-200 CT-600-A (CT-570CH) CT-1570 CT-2500 (CT-2570CH)

PANDUIT APPROVED TOOLS
CT-160 CT-260



TITLE		#18-14 BARREL NON-INSULATED FORK		
ITEM REVISION NAME		CUSTOMER DRAWING		
DATASET FILE NAME		N41255BA/11		
UNLESS OTHERWISE SPECIFIED, DIMENSIONAL TOLERANCES ARE: IN [ mm ]		<b>PANDUIT</b> ™		
DRAWN BY		DATE	CHK	SCALE
MS		-		NONE
THIRD ANGLE PROJECTION		DRAWING NUMBER: A41255		
SHEET 1 OF 1		SIZE A		

REV	DATE	BY	CHK	APR	DESCRIPTION	ECN
11	5/17	JHNU	TMR	RGB	ADDED CSA BACK TO DRAWING, UPDATED TOOL CHART FORMAT	N41255BA-A41255
10	06/14	MBY	JHNU	RGB	REVISED NOTES, MOVED TOOLS TO TABLE, REVISED CERTIFICATION	N41255BA-A41255
09	07.20.12	BDK	LCA	VMB	ADDED PM2-3F AND PM2-5F. ADDED METRIC EQUIVALENT. CHANGED PACKAGING NOTE. REVISED INSTALLATION TOOLS NOTE. BROUGHT DRAWING TO CURRENT STANDARDS.	N41255BA-DC

D10100DA/12