



Chipsmall Limited consists of a professional team with an average of over 10 year of expertise in the distribution of electronic components. Based in Hongkong, we have already established firm and mutual-benefit business relationships with customers from,Europe,America and south Asia,supplying obsolete and hard-to-find components to meet their specific needs.

With the principle of “Quality Parts,Customers Priority,Honest Operation,and Considerate Service”,our business mainly focus on the distribution of electronic components. Line cards we deal with include Microchip,ALPS,ROHM,Xilinx,Pulse,ON,Everlight and Freescale. Main products comprise IC,Modules,Potentiometer,IC Socket,Relay,Connector.Our parts cover such applications as commercial,industrial, and automotives areas.

We are looking forward to setting up business relationship with you and hope to provide you with the best service and solution. Let us make a better world for our industry!



Contact us

Tel: +86-755-8981 8866 Fax: +86-755-8427 6832

Email & Skype: info@chipsmall.com Web: www.chipsmall.com

Address: A1208, Overseas Decoration Building, #122 Zhenhua RD., Futian, Shenzhen, China



4ch / P1X4A

8ch / P1X8A

World's smallest CWDM Mux/ Demux achieved by combining Omron's MLA with Thin Film Filters in a proprietary structure (Patent Pending).

- Ultra small form factor
- 4+1 and 8+1 (1310 express channel) models available
- Space saving single-sided entry ribbon fibre
- Versatile free mounting direction
- CWDM and LX4 wavelengths available
- Tap case package available
- Various fibre and connector options available



Ordering Information

Model Number Legend

P1X A- S

1 2 3 4 5 6

- | | | |
|--|---|---|
| <p>1. Number of channels
4 or 8</p> <p>2. Classification
MX: Mux,
DX: Demux,
MD: Mux & Demux</p> | <p>3. Starting centre wavelength
e.g. 1471, 1511, 1531</p> <p>4. Channel spacing
e.g. ITU-T G.694.2
20nm: 20</p> <p>5. Case type
Blank: Standard
T: Tap case</p> | <p>6. Cable length
Blank: Standard 1000mm
(or insert length required
in mm)</p> <p>7. Connector type
Blank: Ribbon fibre only (or insert
one of the following: SC, FC,
MU, LC, SCAPC, FCAPC,
LCAPC) - Other types of
connectors available, (eg.
E2000-APC and
configurations) contact Omron
for information</p> |
|--|---|---|

Application Examples

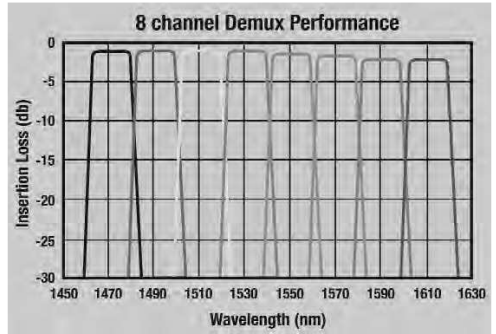
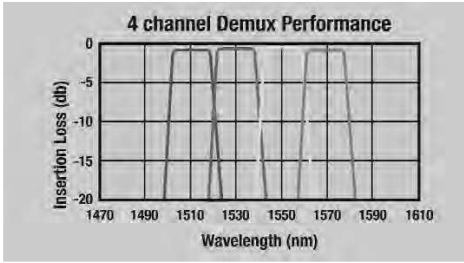
- CWDM
- WDM-PON
- Transponder, Transceiver
- OADM (Optical Add/Drop Multiplexer)
- 3G Basestations
- CATV

Specifications

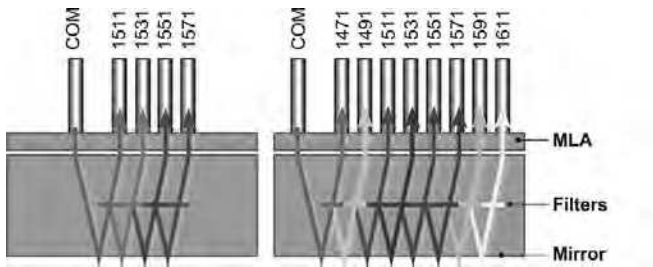
	P1X4A	P1X8A
Number of Channels	4	8
Centre Wavelength	1471,1491,1511,1531,1551, 1571, 1591,1611nm (standard CWDM) 1275.7, 1300.2, 1324.7, 1349.2 (LX4) (Other wavelengths available)	1471,1491,1511,1531,1551, 1571,1591,1611nm (standard CWDM) (Other wavelengths available)
Pass Band Width	≥13nm (13.4nm for LX4)	≥13nm
Insertion Loss	≤ 2.0dB (Typ. 1.2dB)	≤ 2.7dB (Typ. 2.3dB)
Isolation	≥30dB (Typ. 35dB)	≥30dB(Typ. 35dB)
Return Loss	≥35dB (Typ. 40dB)	≥35dB (Typ. 40dB)
Optical Power	100mW	100mW
Operating Temperature	0 to 70°C	0 to 70°C
Storage Temperature	-40 to 85°C	-40 to 85°C
Dimensions	W7.2 x L14.5 x H4.7mm	W7.2 x L14.5 x H4.7mm

Note: Typical specifications are at room temperature and include connectors

■ Performance



■ Structures

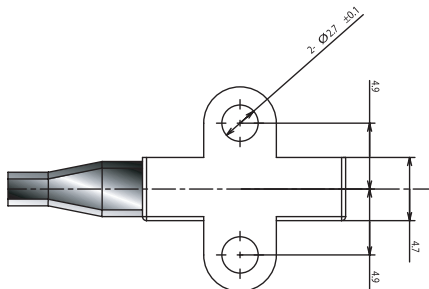


■ Dimensions (mm)

Standard package



Tap case package



Omron Electronic Components Europe BV reserves the right to make any changes to the specifications of the products described at its sole discretion and without prior notice.

For full terms and conditions, visit our website www.omroncomponents.com and click on legal notices.

ALL DIMENSIONS SHOWN ARE IN MILLIMETRES.

To convert millimetres into inches, multiply by 0.03937. To convert grams into ounces, multiply by 0.03527.