



Chipsmall Limited consists of a professional team with an average of over 10 year of expertise in the distribution of electronic components. Based in Hongkong, we have already established firm and mutual-benefit business relationships with customers from,Europe,America and south Asia,supplying obsolete and hard-to-find components to meet their specific needs.

With the principle of “Quality Parts,Customers Priority,Honest Operation,and Considerate Service”,our business mainly focus on the distribution of electronic components. Line cards we deal with include Microchip,ALPS,ROHM,Xilinx,Pulse,ON,Everlight and Freescale. Main products comprise IC,Modules,Potentiometer,IC Socket,Relay,Connector.Our parts cover such applications as commercial,industrial, and automotives areas.

We are looking forward to setting up business relationship with you and hope to provide you with the best service and solution. Let us make a better world for our industry!



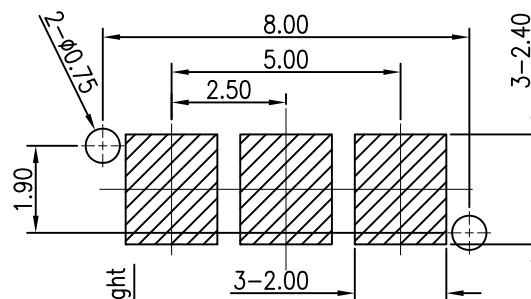
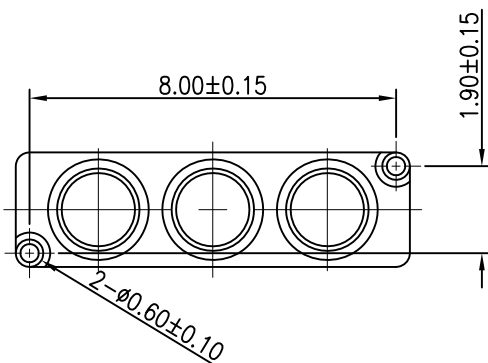
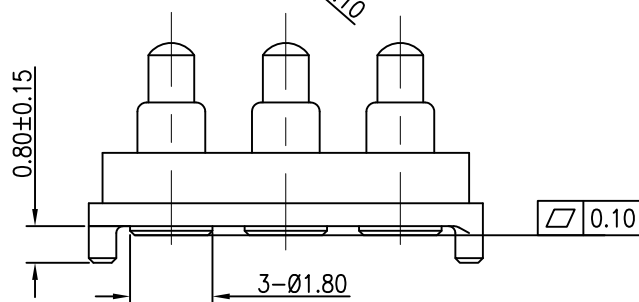
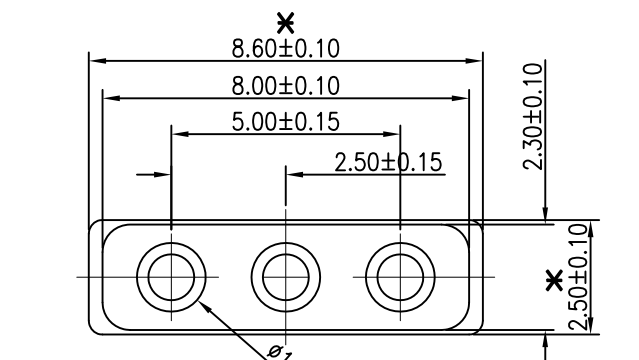
## Contact us

Tel: +86-755-8981 8866 Fax: +86-755-8427 6832

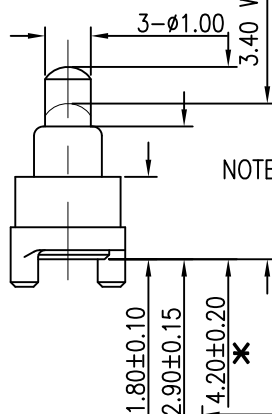
Email & Skype: [info@chipsmall.com](mailto:info@chipsmall.com) Web: [www.chipsmall.com](http://www.chipsmall.com)

Address: A1208, Overseas Decoration Building, #122 Zhenhua RD., Futian, Shenzhen, China

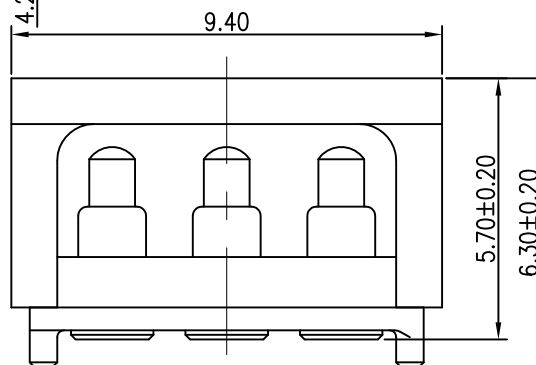




RECOMMEND PCB LAYOUT  
Layout Tolerance:  $\pm 0.05\text{mm}$

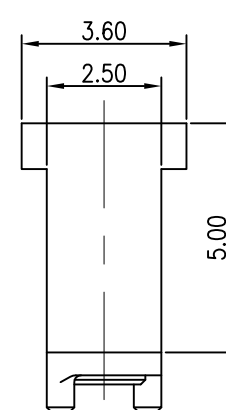


NOTES: ALL DIMENSIONS AND NOTES  
MARKED \* ARE CRITICAL AND  
MUST BE CHECKED IN ACCORDANCE  
WITH QUALITY DOC. QI-02A



## NOTES:

- Materials:  
 .Housing&Cap: Black HTN(UL94V-0)  
 .Plunger: Brass C3604  
 .Barrel: Brass C3604  
 .Spring: SUS304
- Plating:  
 .Contact Surface: 10 micro-inch minimum Au  
 over 50~100 micro-inch Ni.
- Electrical  
 .Rated Current & Voltage: DC 50V; 1A  
 .Contact Resistance: 50 mohm maximum  
 at Working Height(Quiescence)
- Mechanical  
 .Spring Force:  $120\text{g} \pm 20\%$  at Normal Working Height  
 .Durability: 10,000 cycles(minimum)
- When the current is greater than 1A then need to  
 increase the time delay circuit(3 second)
- To ensure the best usage, please operate  
 it based on the working Height.  
 .Based on the Engineering Drawings, shall not exceed  
 the maximum allowed compression.
- RoHs and HF compliant product.
- Operation temperature at  $-40^{\circ}\text{C}$  to  $+105^{\circ}\text{C}$ .



Leo	4	23.04.14	A427
Leo	3	13.11.13	A419
Allan	2	28.02.08	A113
Allan	1	01.08.06	-
NAME	ISS.	DATE	C/NOTE
APPROVED: B.Lim			
CHECKED: D.P			
DRAWN: Leo			
CUSTOMER REF.:			
ASSEMBLY DRG:			

# HARWIN

HARWIN USA  
TEL: 603 893 5376  
FAX: 603 893 5396  
mis@harwin.com

HARWIN Europe (UK)  
TEL: 023 9231 4545  
FAX: 023 9231 4590  
mis@harwin.co.uk

HARWIN Asia  
TEL: +65 6 779 4909  
FAX: +65 6 779 3868  
mis@harwin.com.sg

THIS DRAWING AND ANY  
INFORMATION OR DESCRIPTIVE  
MATTER SET OUT HEREON ARE  
CONFIDENTIAL AND COPYRIGHT  
PROPERTY OF THE HARWIN  
GROUP AND MUST NOT BE  
DISCLOSED, LOANED, COPIED  
OR USED FOR MANUFACTURING,  
TENDERING OR FOR ANY  
OTHER PURPOSE WITHOUT  
THEIR WRITTEN PERMISSION.

TOLERANCES  
 $0 \sim 6.0 = \pm 0.05\text{mm}$   
 $> 6 \sim 30 = \pm 0.10\text{mm}$   
 $> 30 \sim 120 = \pm 0.15\text{mm}$   
 X. =  $\pm 2^{\circ}$   
 X.X =  $\pm 1^{\circ}$   
 X.XX =  $\pm 0.5^{\circ}$   
 UNLESS STATED

MATERIAL:

SEE NOTES

FINISH:

SEE NOTES

S/AREA:

mm?

TITLE:

PITCH 2.5mm HEIGHT 4.2mm  
3-POS POGO PIN CONNECTOR

DRAWING NUMBER:

P20-0345R

SHT  
1  
OF  
1