



Chipsmall Limited consists of a professional team with an average of over 10 year of expertise in the distribution of electronic components. Based in Hongkong, we have already established firm and mutual-benefit business relationships with customers from,Europe,America and south Asia,supplying obsolete and hard-to-find components to meet their specific needs.

With the principle of "Quality Parts,Customers Priority,Honest Operation,and Considerate Service",our business mainly focus on the distribution of electronic components. Line cards we deal with include Microchip,ALPS,ROHM,Xilinx,Pulse,ON,Everlight and Freescale. Main products comprise IC,Modules,Potentiometer,IC Socket,Relay,Connector.Our parts cover such applications as commercial,industrial, and automotives areas.

We are looking forward to setting up business relationship with you and hope to provide you with the best service and solution. Let us make a better world for our industry!



## Contact us

Tel: +86-755-8981 8866 Fax: +86-755-8427 6832

Email & Skype: info@chipsmall.com Web: www.chipsmall.com

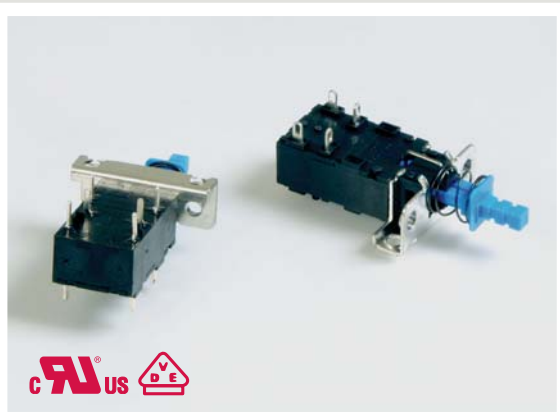
Address: A1208, Overseas Decoration Building, #122 Zhenhua RD., Futian, Shenzhen, China





# SERIES P227 SWITCHES

## POWER PUSHBUTTON SWITCHES



### SPECIFICATIONS

Rating:	7A @ 125 VAC - UL, CUL 4A @ 250 VAC - UL, CUL
Electrical Life:	6,000 cycles
Contact Resistance:	100mΩ max. typical; initial @ 2-4 VDC
Dielectric Strength:	> 1,500 volts 1 minute > 3,000 volts between poles
Operating Force:	550 ±150 gram force
Operating Temperature:	-20°C to +85°C

### MATERIALS

Housing:	Polybutylene Terephthalate (PBT)
Actuator:	Acetal
Bracket:	Steel, tin plated
Contacts:	Silver tin oxide plated copper alloy
Terminals:	Silver plated copper alloy

### FEATURES & BENEFITS

- ▶ Power pushbutton rated up to 7 amps
- ▶ Latching & momentary functions
- ▶ Panel & PC board mount options

### APPLICATIONS/MARKETS

- ▶ Telecommunications
- ▶ Networking
- ▶ Computers/servers
- ▶ Performance audio
- ▶ Instrumentation
- ▶ Low power on/off designs
- ▶ External hard drives and modems

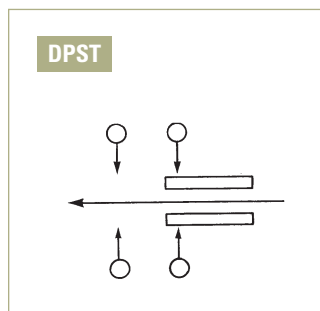
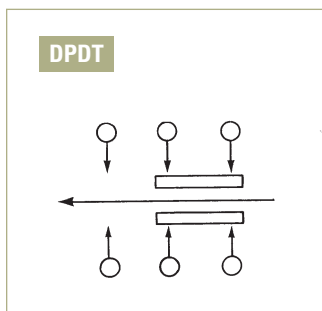
### HOW TO ORDER

SERIES	MECHANICAL CONFIGURATION	CIRCUIT	BRACKET TYPE	PANEL MOUNT 'B' DIMENSION	TERMINATION	CAP	CAP COLOR
<b>P227</b>	<input type="checkbox"/> <input type="checkbox"/>	<input type="checkbox"/>	<input type="checkbox"/>	<input type="checkbox"/>	<input type="checkbox"/>	<input type="checkbox"/>	<input type="checkbox"/>
	EE = Latching OA = Momentary	1 = DPST 2 = DPDT	A = 2-Ø3.2 Panel Mount B = 2-M3.0 x 0.5P Threaded Panel Mount C = PC Bracket D = No Chassis	15 = 15mm 18 = 18mm 20 = 20mm X = None	A B C	See Cap Options	

**Example Ordering Number**  
P227-EE-1-B-20-A-TAG-BLK

Specifications subject to change without notice.

### MECHANICAL CONFIGURATION & CIRCUIT OPTIONS



Mechanical Configuration Code	
EE	Latching
OA	Momentary

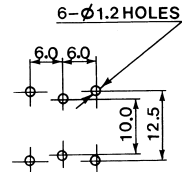
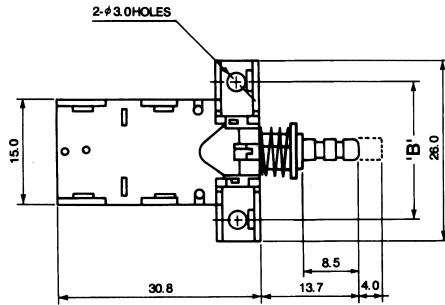
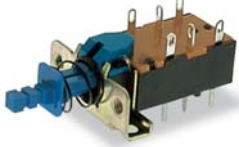
# SERIES P227 SWITCHES

## POWER PUSHBUTTON SWITCHES

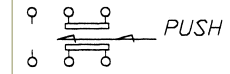
### BRACKET OPTIONS

**A**

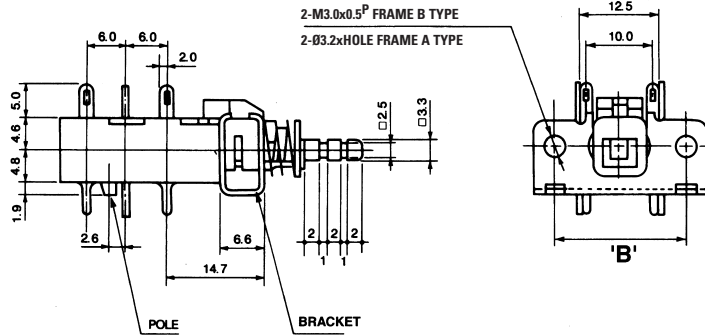
2-Ø3.2 (Non-Threaded)



P.C. MOUNTING



SCHEMATIC

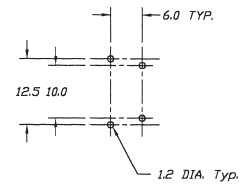
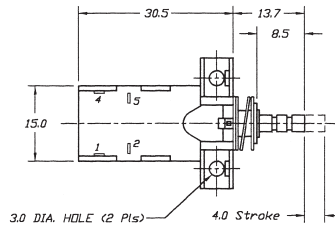


Bracket Type	'B' Dimension Availability		
	15mm	18mm	20mm
A	X	X	X
B	X	X	X

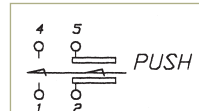
### BRACKET OPTIONS

**B**

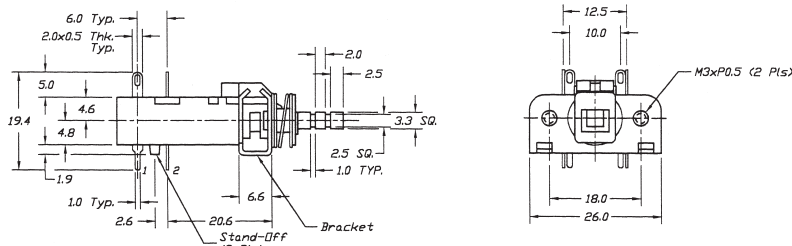
2-M3.0 x 0.5P (Threaded)



P.C. MOUNTING



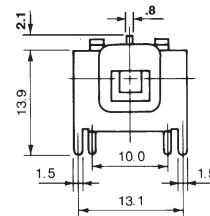
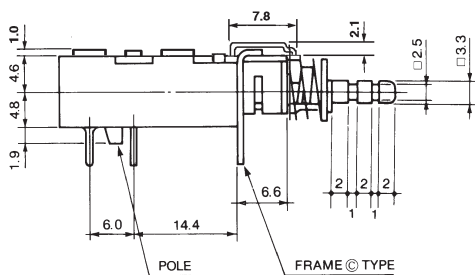
SCHEMATIC



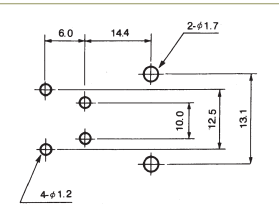
### BRACKET OPTIONS

**C**

P.C. MOUNT



P.C. MOUNTING



TACT SWITCHES

NAVIGATION SWITCHES

PUSHBUTTON SWITCHES

TOGGLE SWITCHES

ROCKER SWITCHES

SLIDE SWITCHES

SNAP-ACTION SWITCHES

DIP SWITCHES

KEYLOCK SWITCHES

ROTARY SWITCHES

DETECTOR SWITCHES

CAP OPTIONS



TERMINATION OPTIONS

