



Chipsmall Limited consists of a professional team with an average of over 10 year of expertise in the distribution of electronic components. Based in Hongkong, we have already established firm and mutual-benefit business relationships with customers from,Europe,America and south Asia,supplying obsolete and hard-to-find components to meet their specific needs.

With the principle of “Quality Parts,Customers Priority,Honest Operation,and Considerate Service”,our business mainly focus on the distribution of electronic components. Line cards we deal with include Microchip,ALPS,ROHM,Xilinx,Pulse,ON,Everlight and Freescale. Main products comprise IC,Modules,Potentiometer,IC Socket,Relay,Connector.Our parts cover such applications as commercial,industrial, and automotives areas.

We are looking forward to setting up business relationship with you and hope to provide you with the best service and solution. Let us make a better world for our industry!



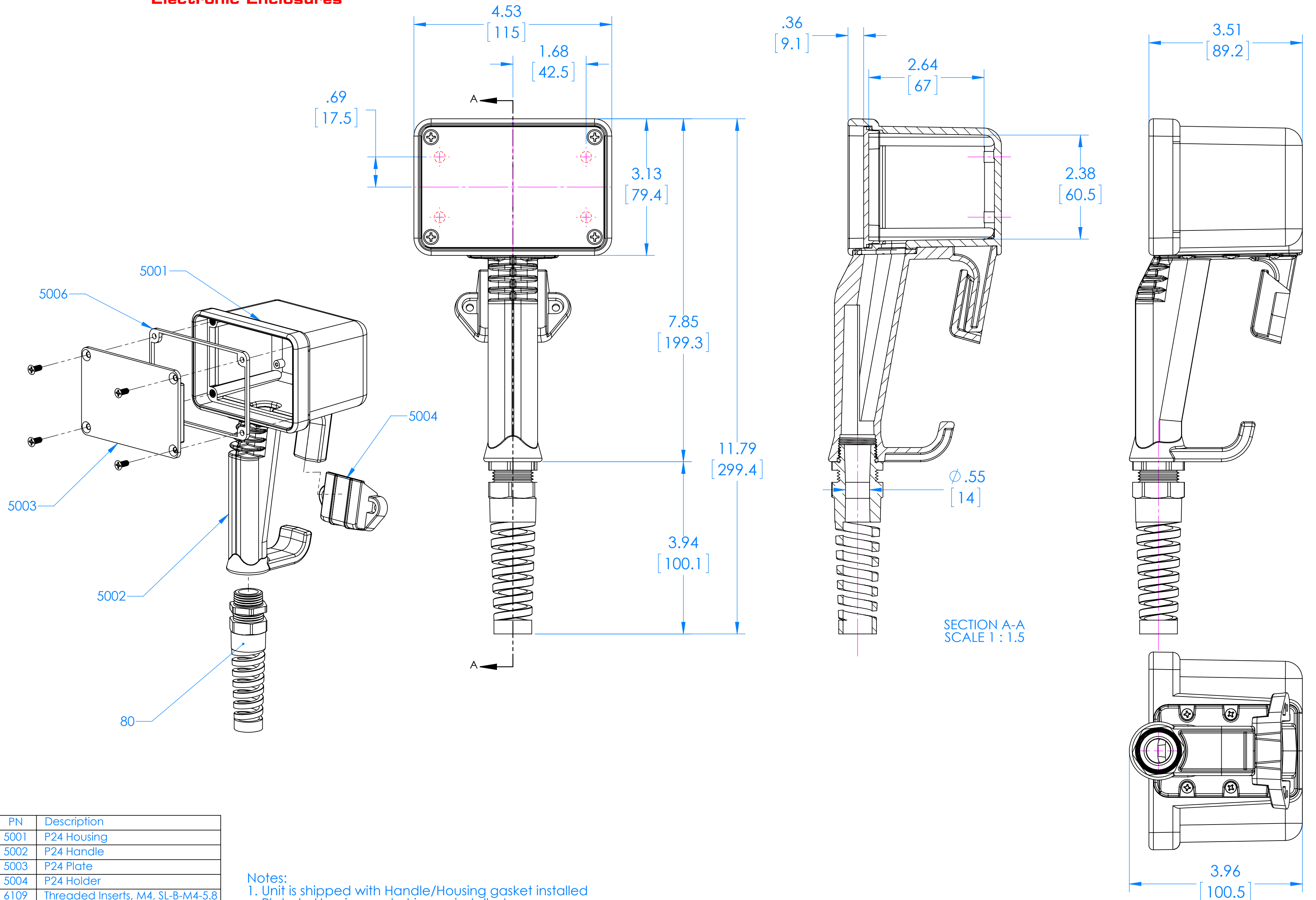
Contact us

Tel: +86-755-8981 8866 Fax: +86-755-8427 6832

Email & Skype: info@chipsmall.com Web: www.chipsmall.com

Address: A1208, Overseas Decoration Building, #122 Zhenhua RD., Futian, Shenzhen, China





Notes:

1. Unit is shipped with Handle/Housing gasket installed. Plate to Housing gasket is user installed.
2. Dim's in Inch/[mm].
3. Standard Material is UL94 HB Polyester (Yellow or Black).
4. Watertight enclosure meets or exceeds Nema 4x / IP66.

PN	Description
5001	P24 Housing
5002	P24 Handle
5003	P24 Plate
5004	P24 Holder
6109	Threaded Inserts, M4, SL-B-M4-5.8
80	PG-16 Pigtail
6036	Truss Hd, Hi-Lo Screw, #4 x 1/4
6037	Screw M4 X 10mm
6038	SS Phil Flat Hd Screw, M4 x 10mm
8010	P24 Gasket