



Chipsmall Limited consists of a professional team with an average of over 10 year of expertise in the distribution of electronic components. Based in Hongkong, we have already established firm and mutual-benefit business relationships with customers from,Europe,America and south Asia,supplying obsolete and hard-to-find components to meet their specific needs.

With the principle of “Quality Parts,Customers Priority,Honest Operation,and Considerate Service”,our business mainly focus on the distribution of electronic components. Line cards we deal with include Microchip,ALPS,ROHM,Xilinx,Pulse,ON,Everlight and Freescale. Main products comprise IC,Modules,Potentiometer,IC Socket,Relay,Connector.Our parts cover such applications as commercial,industrial, and automotives areas.

We are looking forward to setting up business relationship with you and hope to provide you with the best service and solution. Let us make a better world for our industry!



Contact us

Tel: +86-755-8981 8866 Fax: +86-755-8427 6832

Email & Skype: info@chipsmall.com Web: www.chipsmall.com

Address: A1208, Overseas Decoration Building, #122 Zhenhua RD., Futian, Shenzhen, China



Data Sheet

P500

Pressure Sensor



Main Features

Pressure Ranges	0 - 1 up to 0 - 70 Bar, 0 - 15 up to 0 - 1000 PSI
Electrical Connection	Packard Electric Metri-Pack 150 Series
Pressure Connection	1/4-18 NPT (external), 1/8-27 NPT (external) - for more options see how to order
Housing Material	Brass (up to 300 psi) and stainless steel (above 300 psi)
Output Voltage	0.5 to 4.5 Vdc

Attributes

- Small Size (3/4" Hex)
- External Hex for Easy Installation
- Linear Amplified Output
- Temperature Compensated
- Superior Long-Term Stability
- Low Power Consumption
- Minimum Life Expectancy: Ten Million Cycles

Typical Applications

- Compressors
- Process Controls
- Instruments & Test Equipment
- Sterilizers
- Air Pressure
- Oil & Fuel Pressure
- Coolant Pressure
- Agricultural Equipment
- CNG & Natural Gas Engines

Description

The P500 incorporates Kavlico's 4th generation ceramic capacitive sense element with the latest state-of-the-art proprietary ASIC. Available in brass or stainless steel housings, this multi-purpose sensor is rugged by design. Highly reliable, the P500 is ideal for measuring a broad range of process media including hydrocarbon based fluids, air, and gases. The P500 package has a built-in Metri-Pack 150 series sealed electrical connector and is available with popular pressure connection thread options. The sensor is offered with seal materials suitable for diverse applications. Standard pressure ranges are available in PSI or Bar.

Technical Specifications

Pressure Ranges

Bar A	0 - 1	0 - 1.6	0 - 2.5	0 - 4	0 - 6	0 - 10	0 - 16	0 - 25	0 - 40	0 - 50	0 - 70	
PSI A	0 - 15	0 - 20	0 - 30	0 - 50	0 - 75	0 - 100	0 - 150	0 - 200	0 - 300	0 - 500	0 - 750	0 - 1000

For custom pressure ranges consult Kavlico Pressure Sensors.

Physical

Durability/Service Life	10 million full pressure cycles (minimum)
Proof Pressure	3X FS Pressure (upto 14 Bar / 200 PSI) 2X FS Pressure (above 14 Bar / 200 PSI)
Burst Pressure	1500 PSI (upto 24 Bar / 350 PSI) 2500 PSI (above 24 Bar / 350 PSI)
Humidity	93 +/- 3% RH
Vibration	10 g's peak to peak sine (10 - 2000 Hz)
Shock	75 g's, 1/2 Sine Wave
Drop Test	1 meter drop on concrete as per SAE J1455
Weight	< 50 gm
Ingress Protection	IP67

Performance

Linearity Error	$\leq \pm 0.5\%$ of span
Total Error Band	$\pm 1.5\%$ of span ($0 \leq T \leq 85\text{ C}^\circ$) $\pm 2.0\%$ of span ($T < 0\text{ C}^\circ, T < 85\text{ C}^\circ$)
Stability Coefficient	$\pm 0.3\%$ of Full span over 1 year
Operating Temperature	-40 C° to 125 C° (Seal material dependent. See How to Order)
Storage Temperature	-40 C° to 125 C° (Seal material dependent. See How to Order)

Electrical

Supply Voltage	5.0 Vdc +/- 0.5
Output Voltage	0.5 to 4.5 Vdc
Supply Current	≤ 5 mA
Output Impedance	≤ 100 Ω
Output load	≥ 10 KΩ
Output response time	≤ 2 ms to 63 % of final output voltage with step change in input pressure
Oversvoltage protection	36 Vdc
Reverse Voltage	-36 Vdc
Short Circuit protected	Output to supply, Output to Ground: Indefinite
Isolation Voltage	R ≥ 100 MΩ, 500 Vdc / 1 min
Warmup time	3 mSec Max.
EMC	Meets ISO 7637-3, ISO 11452-4, ISO 11452-2, CISPR 25, MIL-STD 461 E
ESD	IEC 1000-4.2 (8kV contact, 15kV air), ISO 10605 (8kV contact, 25kV air)

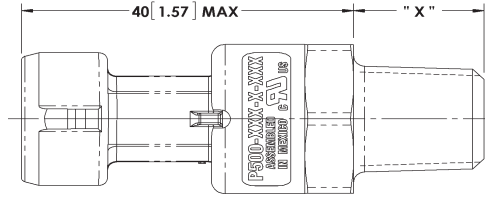
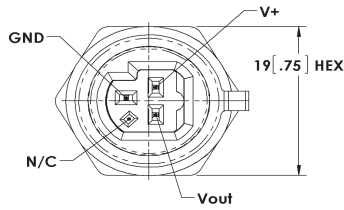
Approvals & Certificates

CE Compliance	EN 61326-1, 2006 IEC 61000-4-2, 2001 IEC 61000-4-3, 2006 IEC 61000-4-8, 2001
UL	File # SA10552
ROHS	2002/95/EC RoHS Directive

Dimensions

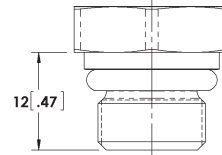
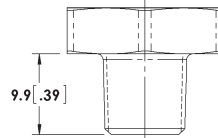
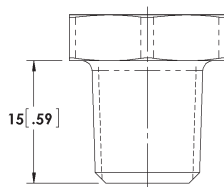
Pressure Sensor with Electrical Connection

Dimensions in mm [Inch]

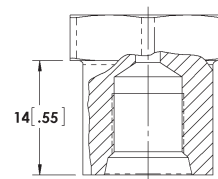
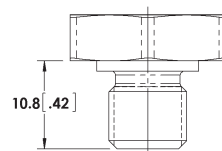
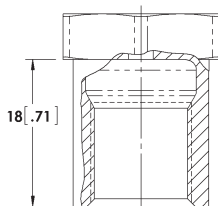


Pressure Connections and Recommended Installation Torque

Dimensions in mm [Inch]



Name	1/4 - 18 NPT	1/8 - 27 NPT	Stud End DIN 3852-B-G1/4
Thread	External	External	External
Torque	25 Nm	20 Nm	20 Nm



Name	Tapped Hole DIN 3852-Y-G1/4	3/8-24 UNF-2A PER SAE J 1926/2	3/8-24 UNF-2B PER SAE J 1926/1
Thread	Internal	External	Internal
Torque	15 Nm	22 Nm	22 Nm

Note: Recommended torque may vary according to material and specific application.

How to Order



Pressure Ranges	
1B 0 – 1 Bar	15 0 – 15 PSI
1.6B 0 – 1.6 Bar	20 0 – 20 PSI
2.5B 0 – 2.5 Bar	30 0 – 30 PSI
4B 0 – 4 Bar	50 0 – 50 PSI
6B 0 – 6 Bar	75 0 – 75 PSI
10B 0 – 10 Bar	100 0 – 100 PSI
16B 0 – 16 Bar	150 0 – 150 PSI
25B 0 – 25 Bar	200 0 – 200 PSI
40B 0 – 40 Bar	300 0 – 300 PSI
50B 0 – 50 Bar	500 0 – 500 PSI
70B 0 – 70 Bar	750 0 – 750 PSI
	1000 0 – 1000PSI

Reference
A Absolute
G Gage
S Sealed Gage (Referenced to 14.7 PSIA)

Built-in Electrical Connection
A With Mating Connector, w/12", 18 AWG Leads
C Without Mating Connector

Example:
 P500 -16B - A - E1A

Description:
 P500 Sensor, 0 - 16 Bar Absolute, Fluorosilicone Seal Material, 1/4 - 18 NPT Pressure Connection, with Mating Connector



Before installation and operation, ensure that the appropriate pressure sensor has been selected in terms of pressure range, design and specific measuring conditions. Non-compliance can result in serious injury and/or damage to the equipment.

Warning: The product information contained in this catalogue is given purely as information and does not constitute a representation, warranty or any form of contractual commitment. Kavlico reserve the right to modify their products without notice. It is imperative that we should be consulted over any particular use or application of our products and it is the responsibility of the buyer to establish, particularly through all the appropriate tests, that the product is suitable for the use or application. Under no circumstances will our warranty apply, nor shall we be held responsible for any application (such as any modification, addition, deletion, use in conjunction with other electrical or electronic components, circuits or assemblies, or any other unsuitable material or substance) which has not been expressly agreed by us prior to the sale of our products.



Sales Offices Worldwide

Americas

Brazil
Mexico
USA

Europe

England
France
Germany
Italy
Netherlands
Spain
Sweden
Russia

Asia Pacific

China
India
Japan
South Korea

Main Contact

Sensata Germany GmbH
Potsdamer Strasse 14,
32423 Minden
Tel: +49 571 3859-0
Fax: +49 571 3859-119
www.kavlico.com
www.sensata.com

Your local sales contact: