



Chipsmall Limited consists of a professional team with an average of over 10 year of expertise in the distribution of electronic components. Based in Hongkong, we have already established firm and mutual-benefit business relationships with customers from,Europe,America and south Asia,supplying obsolete and hard-to-find components to meet their specific needs.

With the principle of “Quality Parts,Customers Priority,Honest Operation,and Considerate Service”,our business mainly focus on the distribution of electronic components. Line cards we deal with include Microchip,ALPS,ROHM,Xilinx,Pulse,ON,Everlight and Freescale. Main products comprise IC,Modules,Potentiometer,IC Socket,Relay,Connector.Our parts cover such applications as commercial,industrial, and automotives areas.

We are looking forward to setting up business relationship with you and hope to provide you with the best service and solution. Let us make a better world for our industry!



Contact us

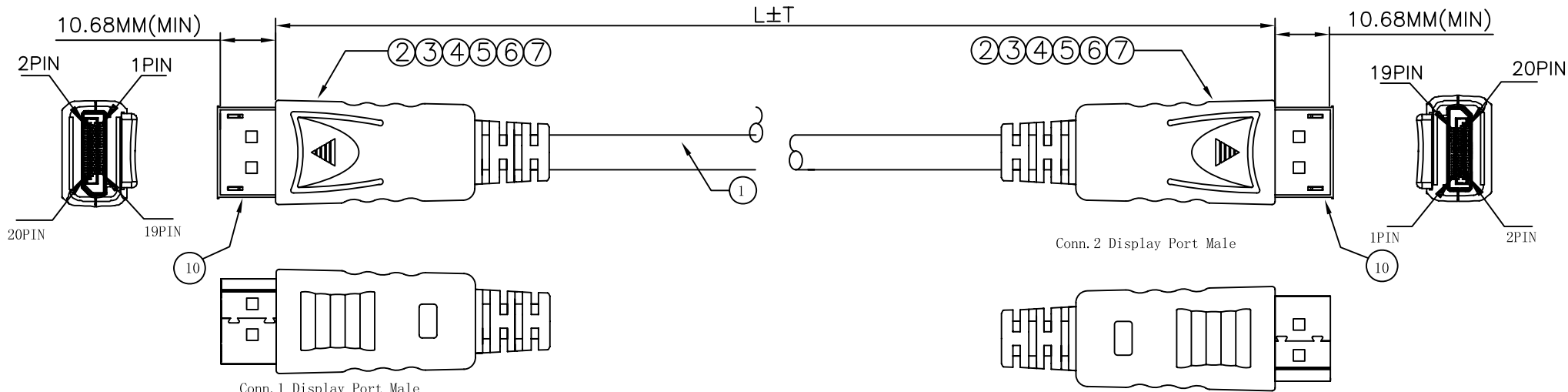
Tel: +86-755-8981 8866 Fax: +86-755-8427 6832

Email & Skype: info@chipsmall.com Web: www.chipsmall.com

Address: A1208, Overseas Decoration Building, #122 Zhenhua RD., Futian, Shenzhen, China



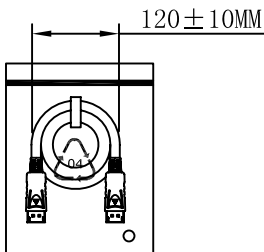
REV.	REVISION HISTORY	DATE
0	Initial release	Jan.11.2014
1	Change the length	Nov.04.2014



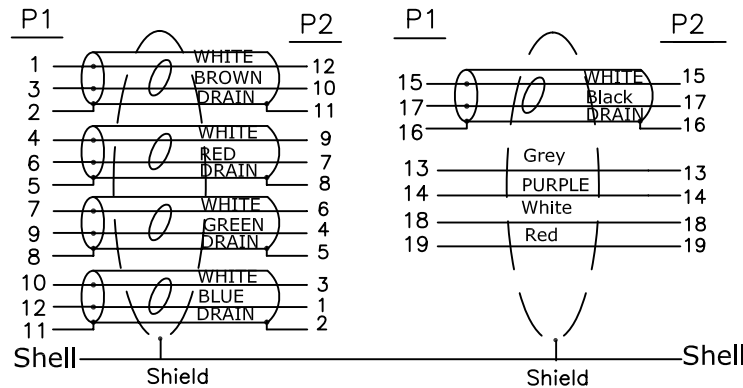
P/N	L(FT)	T(MM)	PE BAG
P580-001	1FT	10mm	7"*9"*0.08 mm
P580-003	3FT	15mm	7"*9"*0.08 mm
P580-006	6FT	20mm	7"*9"*0.08 mm
P580-010	10FT	30mm	7"*9"*0.08 mm

Electrical Test:

1. 100% Test(Open ,short ,miss wire)
2. Contact Resistance:3 ohm max.
3. Insulation Resistance: 10M ohm min.
4. Hi-pot: 300V DC/10ms



Pin Assignment



				TOLERANCE			Tripp Lite			
				INCHES	M/M					
7	DisplayPort M Transparent dust cover	2	pcs	.X	.015	.30	TITLE: Display Port M to M Cable			
6	Inside Molding:PE	4	g	.XX	.010	.10				
5	45P Black PVC	10	g	.XXX	.005	.05				
4	DisplayPort (DP01#) M Black ABS down Shell	2	pcs	DRAWN BY: HELONGCHAO			CUSTOMER :			
3	DisplayPort M(DP01#) Black ABS UP Shell	2	pcs	CHECK BY:			CUSTOMER NO. :			
2	DisplayPort M Insulation:Black,Shell nickelplate	2	pcs	APPD BY:			SCALE: NONE	DRAWING NO. :		REV. B
1	Display Por UL20276 (7/0.102TA*1PR+EAM)*5+7/0.102TA*5C+AEB<AL> 50% B=16/5/0.12AL OD:6.0MM BLACK	L	m				UNIT: MM			
NO	DESCRIPTION	Q'TY	UNIT				DATE: 2014.01.11			1/5