



Chipsmall Limited consists of a professional team with an average of over 10 year of expertise in the distribution of electronic components. Based in Hongkong, we have already established firm and mutual-benefit business relationships with customers from,Europe,America and south Asia,supplying obsolete and hard-to-find components to meet their specific needs.

With the principle of “Quality Parts,Customers Priority,Honest Operation,and Considerate Service”,our business mainly focus on the distribution of electronic components. Line cards we deal with include Microchip,ALPS,ROHM,Xilinx,Pulse,ON,Everlight and Freescale. Main products comprise IC,Modules,Potentiometer,IC Socket,Relay,Connector.Our parts cover such applications as commercial,industrial, and automotives areas.

We are looking forward to setting up business relationship with you and hope to provide you with the best service and solution. Let us make a better world for our industry!



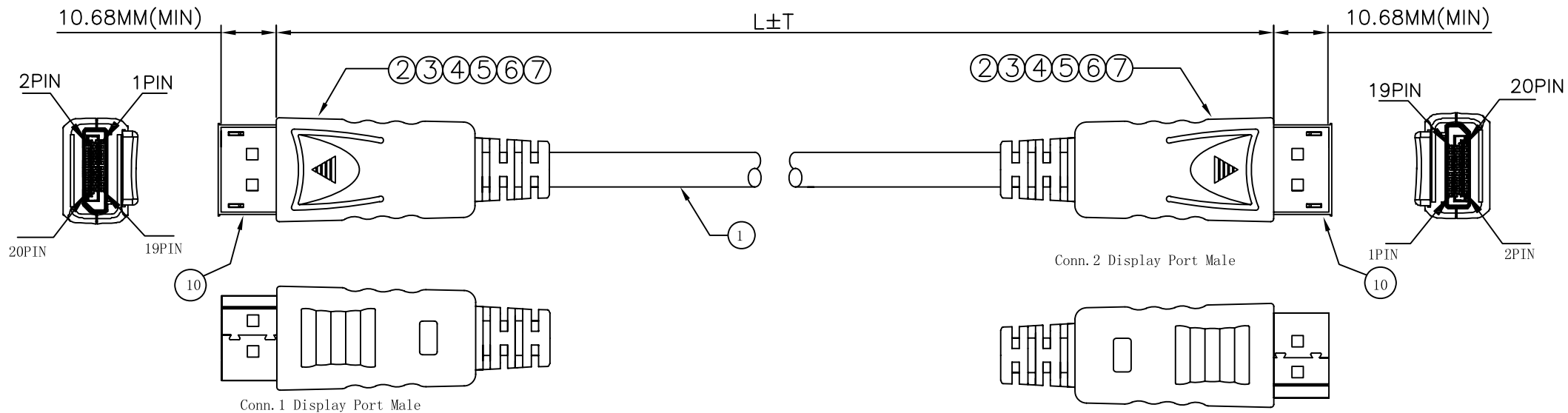
Contact us

Tel: +86-755-8981 8866 Fax: +86-755-8427 6832

Email & Skype: info@chipsmall.com Web: www.chipsmall.com

Address: A1208, Overseas Decoration Building, #122 Zhenhua RD., Futian, Shenzhen, China



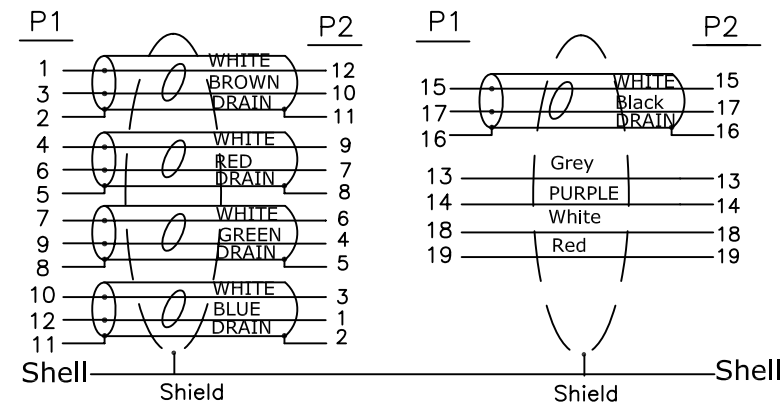


Electrical Test:

1. 100% Test(Open ,short ,miss wire)
2. Contact Resistance:3 ohm max.
3. Insulation Resistance: 10M ohm min.
4. Hi-pot: 300V DC/10ms

P/N	L (FT)	T (MM)	PE BAG
P580-015	15FT	30mm	10"13"*0.1 mm
P580-020	20FT	50mm	10"13"*0.1 mm
P580-025	25FT	60mm	10"13"*0.1 mm

Pin Assignment



DESCRIPTION		Q' TY	UNIT	TOLERANCE			Tripp Lite			
				INCHES		M/M	TITLE: Display Port M to M Cable			
7	DisplayPort M Transparent dust cover	2	pcs	.X	.015	.30	CUSTOMER :			
6	Inside Molding:PE	4	g	.XX	.010	.10	CUSTOMER NO. :			
5	45P Black PVC	10	g	.XXX	.005	.05	DRAWN BY		HELONGCHAO	
4	DisplayPort (DP01#) M Black ABS down Shell	2	pcs	CHECK BY			SCALE		NONE	
3	DisplayPort M(DP01#) Black ABS UP Shell	2	pcs	APPD BY			UNIT		MM	
2	DisplayPort M Insulation:Black,Shell nickelplate	2	pcs	DATE			2014.05.02		DRAWING NO. :	
1	Display Port UL20276 (28AWG*1P+EAM)*5C+28AWG*5C+AEB (B=16/5/0.12 50%AL) OD:7.3MM BLACK	L	m	REV. A			1/1			