



Chipsmall Limited consists of a professional team with an average of over 10 year of expertise in the distribution of electronic components. Based in Hongkong, we have already established firm and mutual-benefit business relationships with customers from,Europe,America and south Asia,supplying obsolete and hard-to-find components to meet their specific needs.

With the principle of “Quality Parts,Customers Priority,Honest Operation,and Considerate Service”,our business mainly focus on the distribution of electronic components. Line cards we deal with include Microchip,ALPS,ROHM,Xilinx,Pulse,ON,Everlight and Freescale. Main products comprise IC,Modules,Potentiometer,IC Socket,Relay,Connector.Our parts cover such applications as commercial,industrial, and automotives areas.

We are looking forward to setting up business relationship with you and hope to provide you with the best service and solution. Let us make a better world for our industry!



Contact us

Tel: +86-755-8981 8866 Fax: +86-755-8427 6832

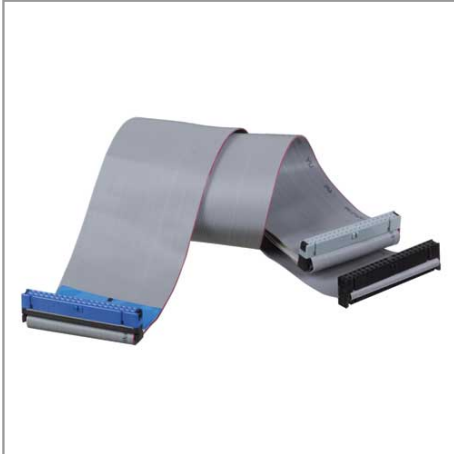
Email & Skype: info@chipsmall.com Web: www.chipsmall.com

Address: A1208, Overseas Decoration Building, #122 Zhenhua RD., Futian, Shenzhen, China



Internal Ribbon Cable, Dual Ultra, 33/66/100 ATA/DMA EIDE, (3Conn 40P), 18-in.

MODEL NUMBER: P906-18I



Highlights

- An assortment of high quality internal cables
- Includes IDE and EIDE ribbon cables, power cables and CD-ROM cable assemblies

System Requirements

- EIDE device drive
- EIDE controller channel with Pin 20 blocked

Package Includes

- 18-in. Int Dual Ultra 33/66/100 ATA/DMA EIDE Ribbon Cable 3Conn 40P

Description

Tripp Lite's enhanced IDE (EIDE) ribbon cable connects up to two internal IDE hard drives to a controller card. This internal dual Ultra DMA/ATA ribbon supports UDMA/33, ATA/66 and ATA/100. This 18-inch cable is constructed with 80 conductor ribbon and contains three 40pin socket connectors (one for the controller card and the other two for drives).

Features

- Connects up to two internal IDE hard drives to a controller card
- 80 conductor cable
- Supports UDMA/33, ATA/66 and ATA/100
- Cable contains three 40pin socket connectors (one for the controller card and the other two for drives)
- NOTE: pin 20 on the controller side is blocked so this is not a generic EIDE cable solution. controllers must be missing pin 20 to attach to this cable

Specifications

OVERVIEW	
UPC Code	037332041654
Technology	Ribbon/Internal
INPUT	
Cable Length (ft.)	1.5
Cable Length (m)	0.5
Cable Length (in.)	18



Tripp Lite
1111 W. 35th Street
Chicago, IL 60609 USA
Telephone: 773.869.1234
www.tripplite.com

Cable Length (cm)	45.72
PHYSICAL	
Shipping Dimensions (hwd / in.)	9.000 x 7.000 x 0.500
Shipping Dimensions (hwd / cm)	22.86 x 17.78 x 1.27
Shipping Weight (lbs.)	0.1000
Shipping Weight (kg)	0.05
Color	Gray
ENVIRONMENTAL	
Operating Temperature Range	(-10°) - 75° C
Storage Temperature Range	(-20°) - 80° C
CONNECTIONS	
Side A - Connector 1	40 POS. SOCKET (FEMALE)
Side B - Connector 1	(2) 40 POS. SOCKET (FEMALE)
CERTIFICATIONS	
Certifications	RoHS-Compliant
WARRANTY	
Product Warranty Period (Worldwide)	Lifetime limited warranty

© 2018 Tripp Lite. All rights reserved. All product and company names are trademarks or registered trademarks of their respective holders. Use of them does not imply any affiliation with or endorsement by them. Tripp Lite has a policy of continuous improvement. Specifications are subject to change without notice.

Tripp Lite uses primary and third-party agencies to test its products for compliance with standards. See a list of Tripp Lite's testing agencies:

<https://www.tripplite.com/products/product-certification-agencies>