



Chipsmall Limited consists of a professional team with an average of over 10 year of expertise in the distribution of electronic components. Based in Hongkong, we have already established firm and mutual-benefit business relationships with customers from,Europe,America and south Asia,supplying obsolete and hard-to-find components to meet their specific needs.

With the principle of “Quality Parts,Customers Priority,Honest Operation,and Considerate Service”,our business mainly focus on the distribution of electronic components. Line cards we deal with include Microchip,ALPS,ROHM,Xilinx,Pulse,ON,Everlight and Freescale. Main products comprise IC,Modules,Potentiometer,IC Socket,Relay,Connector.Our parts cover such applications as commercial,industrial, and automotives areas.

We are looking forward to setting up business relationship with you and hope to provide you with the best service and solution. Let us make a better world for our industry!



Contact us

Tel: +86-755-8981 8866 Fax: +86-755-8427 6832

Email & Skype: info@chipsmall.com Web: www.chipsmall.com

Address: A1208, Overseas Decoration Building, #122 Zhenhua RD., Futian, Shenzhen, China





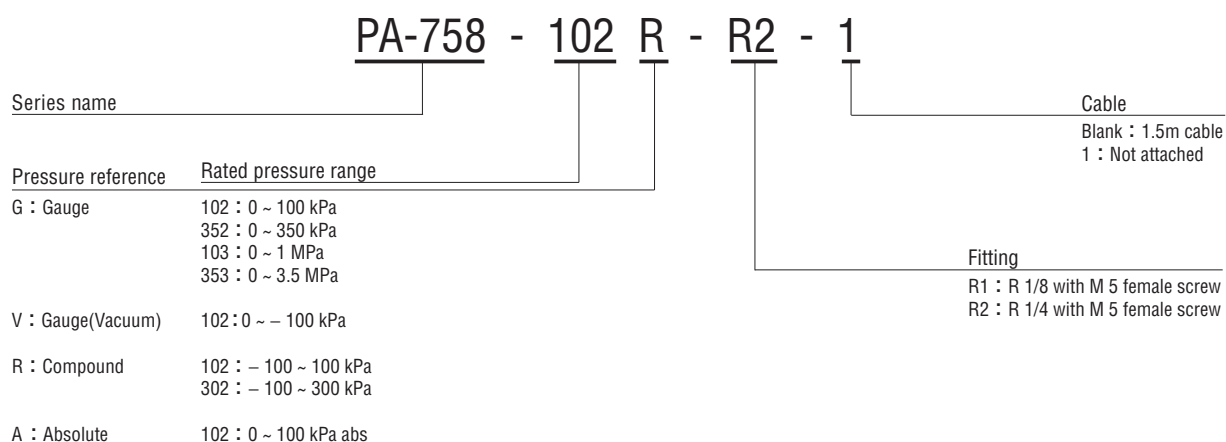
INTERNAL STRUCTURE
PA-758 (R 1/4)

Part name		Material
①	Fitting	SUS 304
②	Housing	PPS
③	Stainless steel diaphragm	SUS 316L

FEATURES

- High corrosion resistance and drip-proof construction
Pressure port attachment made of SUS 316L
Proven IP65 grade gauge body (IP-65 in accordance with IEC)
- Cable connector connection
- Built-in temperature compensation function (0 ~ 50°C)
- Absolute pressure type and compound pressure type
which can control negative to positive pressure with only
a single pressure gauge are all in line
- Current output mode

MODEL NUMBER DESIGNATION



※ Please refer to the LIST OF MODEL NUMBERS when placing orders.

PA-758

PRESSURE TRANSDUCERS WITH AMP.

LIST OF MODEL NUMBERS

Fitting	Pressure reference		Gauge						Absolute
	Cable	kPa Rated pressure range	0 ~ 100	0 ~ 350	0 ~ 1000	0 ~ 3500	0 ~ - 100	- 100 ~ 100	- 100 ~ 300
R1	Attached	PA-758- ↻ 102G-R1	PA-758- ↻ 352G-R1	PA-758- 103G-R1	PA-758- 353G-R1	PA-758- ↻ 102V-R1	PA-758- 102R-R1	PA-758- 302R-R1	PA-758- 102A-R1
	Not attached	PA-758- ↻ 102G-R1-1	PA-758- ↻ 352G-R1-1	PA-758- 103G-R1-1	PA-758- 353G-R1-1	PA-758- ↻ 102V-R1-1	PA-758- 102R-R1-1	PA-758- 302R-R1-1	PA-758- 102A-R1-1
R2	Attached	PA-758- ↻ 102G-R2	PA-758- ↻ 352G-R2	PA-758- 103G-R2	PA-758- 353G-R2	PA-758- ↻ 102V-R2	PA-758- 102R-R2	PA-758- 302R-R2	PA-758- 102A-R2
	Not attached	PA-758- ↻ 102G-R2-1	PA-758- ↻ 352G-R2-1	PA-758- 103G-R2-1	PA-758- 353G-R2-1	PA-758- ↻ 102V-R2-1	PA-758- 102R-R2-1	PA-758- 302R-R2-1	PA-758- 102A-R2-1

※Verify the above model numbers when placing orders.
The products marked ↻ are manufactured upon receipt of order basis.

STANDARD SPECIFICATIONS

●Unless otherwise specified, the specs are defined at an ambient temperature of 25 ± 5 °C and excitation voltage of 24 V DC, load resistance of 250 Ω.

Item	Model number	PA-758								
		102G	352G	103G	353G	102V	102R	302R	102A	
General specifications	Pressure reference	Gauge								Absolute
	Rated pressure range	kPa	100	350	1000	3500	- 100	- 100 ~ 100	- 100 ~ 300	100 (abs)
	Maximum pressure	kPa	200	700	2000	5000	200	200	600	200 (abs)
	Break-down pressure	kPa	300	1050	3000	7000	300	300	900	300 (abs)
	Operating temp. range	°C	- 20 ~ 70							
	Compensated temp. range	°C	0 ~ 50							
	Operating humidity	%RH	35 ~ 85 (No condensation)							
	Storage temp.	°C	- 20 ~ 80 (Atmospheric pressure, humidity 65 %RH maximum)							
	Pressure medium		Corrosive gases/liquids compatible with SUS 316L or SUS304							
	Insulation resistance	MΩ minimum	100 (500 V DC)							
	Dielectric strength		500 V AC, 60 s (Leakage current 1 mA maximum)							
	Sealed liquid		Silicone oil							
	Pressure port		R 1/8、R 1/4							
	Net weight	g	R2 : Approx. 50							
Drip-proof structure		IP65								
Power	Supply voltage	V DC	24 ± 10 % (Including ripple percentage)							

PA-758

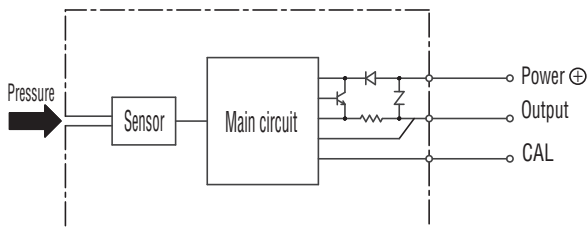
PRESSURE TRANSDUCERS WITH AMP.

Item		Model number	PA-758						
			102G	352G	103G	353G	102V	102R	302R
Analog output	Output current	mA	4 ~ 20 mA						
	Zero current	mA (at 25 °C)	4 ± 0.2				12 ± 0.2	8 ± 0.2	4 ± 0.2
	Span current	mA (at 25 °C)	16 ± 0.2						
	Load resistance		0 ~ 500 Ω						
	Linearity/Hysteresis	%F.S.	± 0.5						
	Thermal error	ZERO %F.S./°C	± 0.05						
		SPAN %F.S./°C	± 0.05						
	Response	ms	Approx. 2						
	resolving power		Approx. 0.016 mA (Approx. 0.1%F.S.)						
Gravitational effect (From horizontal position to vertical position)	%F.S.	± 0.3	± 0.1	± 0.05		± 0.3		± 0.1	± 0.3

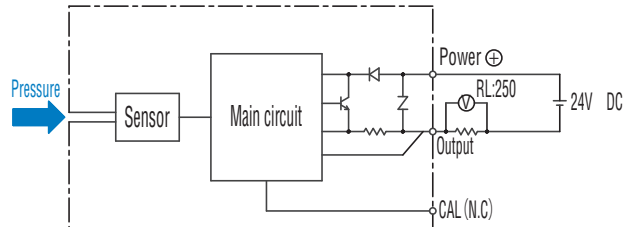
ENVIRONMENTAL CHARACTERISTICS

Test item	Test conditions (At 25 ± 5 °C)	Permissible change
Vibration	10 ~ 500 Hz, 1.5 mm maximum/98.1 m/s ² , 3 directions for 2 hours each	Zero current, Span current: ± 1 %F.S. maximum each
Shock	490 m/s ² 3 directions for 3 times each	
Pressure cycling	0 ~ Rated pressure/Rated pressure range, 10 ⁶ cycles	
Moisture resistance	40 °C, 90 ~ 95 %RH, 240 hrs.	

INTERNAL ELECTRICAL SCHEMATICS



RECOMMENDED EXTERNAL SCHEMATICS



※Do not wire the CAL connection.
It may cause malfunction when voltage is applied.
** ... Calibration

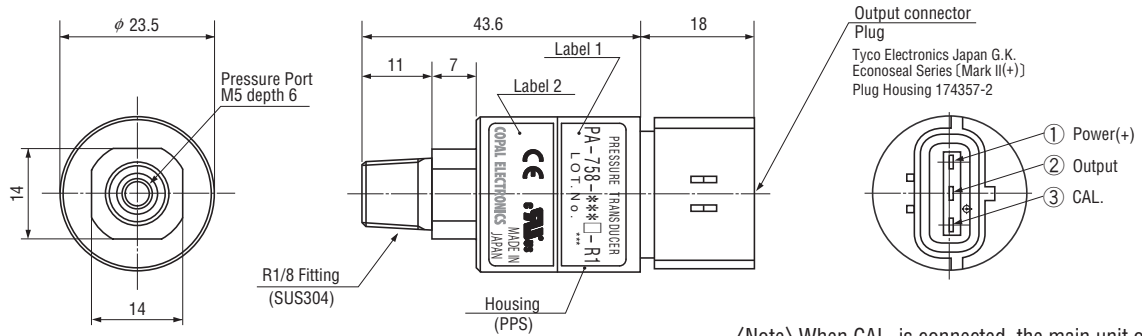
PA-758

PRESSURE TRANSDUCERS WITH AMP.

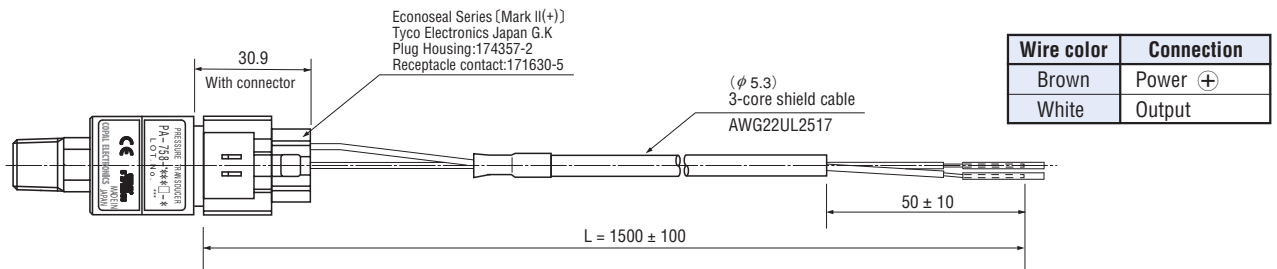
OUTLINE DIMENSIONS

Unless otherwise specified, tolerance : 0.5 (Unit: mm)

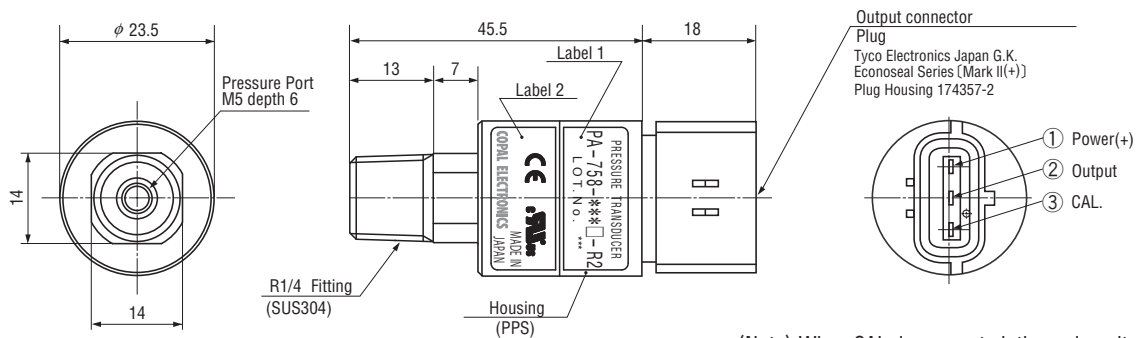
Configurations of joint R1 (R1/8) type



<Note> When CAL. is connected, the main unit of the sensor might malfunction or be damaged.



Configurations of joint R2 (R1/4) type



<Note> When CAL. is connected, the main unit of the sensor might malfunction or be damaged.