



Chipsmall Limited consists of a professional team with an average of over 10 year of expertise in the distribution of electronic components. Based in Hongkong, we have already established firm and mutual-benefit business relationships with customers from,Europe,America and south Asia,supplying obsolete and hard-to-find components to meet their specific needs.

With the principle of “Quality Parts,Customers Priority,Honest Operation,and Considerate Service”,our business mainly focus on the distribution of electronic components. Line cards we deal with include Microchip,ALPS,ROHM,Xilinx,Pulse,ON,Everlight and Freescale. Main products comprise IC,Modules,Potentiometer,IC Socket,Relay,Connector.Our parts cover such applications as commercial,industrial, and automotives areas.

We are looking forward to setting up business relationship with you and hope to provide you with the best service and solution. Let us make a better world for our industry!



Contact us

Tel: +86-755-8981 8866 Fax: +86-755-8427 6832

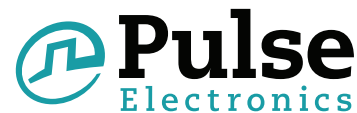
Email & Skype: info@chipsmall.com Web: www.chipsmall.com

Address: A1208, Overseas Decoration Building, #122 Zhenhua RD., Futian, Shenzhen, China



Shielded Drum Core Inductor

PA4330.XXXNLT Series



- ⊕ **Height:** 1.0mm Max
- ⊕ **Footprint:** 2.2mm x 1.8mm Max
- ⊕ **Current Rating:** up to 3.1A
- ⊕ **Inductance Range:** 0.47uH to 2.2uH
- ⊕ *Shielded magnetic circuit reduces leakage flux, Fe base metal core enables high saturation and metalized core termination results in excellent shock resistance*

Electrical Specifications @ 25°C – Operating Temperature -40°C to 125°C

PART NUMBER	INDUCTANCE 1MHz, 1V uH +/-20%	RATED CURRENT A	MIN. SELF-RESONANT FREQUENCY MHz	DC RESISTANCE		SATURATION CURRENT (20°C) A	HEATING CURRENT	
				MAX.	TYP.		20°C Rise	40°C Rise
				mΩ	mΩ		A	A
PA4330.471NLT	0.47	3.1	102	49	41	3.8	2.7	3.1
PA4330.681NLT	0.68	2.8	77	65	57	3.5	2.5	2.8
PA4330.102NLT	1	2.35	70	90	75	3.35	2.05	2.35
PA4330.222NLT	2.2	1.7	39	170	142	1.8	1.45	1.7

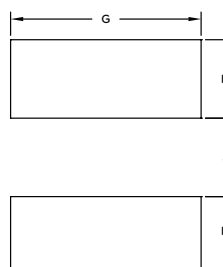
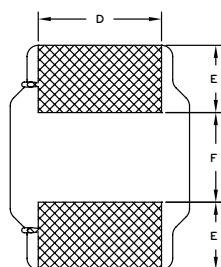
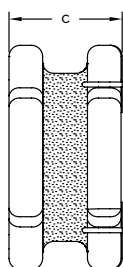
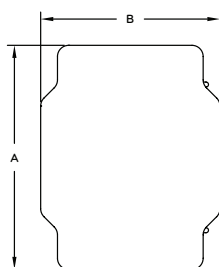
NOTES:

- Actual temperature of the component during system operation (ambient plus temperature rise) must be within the standard operating range.
- The rated current as listed is either the saturation current (20°C) or the heating current (40°C Rise) depending on which value is lower.
- The saturation current is the current at which the initial inductance drops approximately 30% at the stated ambient temperature. This current is determined by placing the component in the specified ambient environment and applying a short duration pulse current (to eliminate self-heating effect) to the component.
- The heating current is the DC current required to raise the component temperature by approximately 20°C or 40°C. Take note that the components' performance varies depending on the system conditions. It is suggested that the component be tested at the system level, to verify the temperature rise of the component during system operation.
- Maximum voltage across terminals to be limited to <25Vdc.

Mechanical

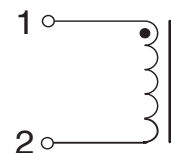
Schematic

PA4330.XXXNLT



FINAL OUTLINE

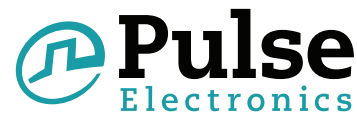
SUGGESTED PAD LAYOUT



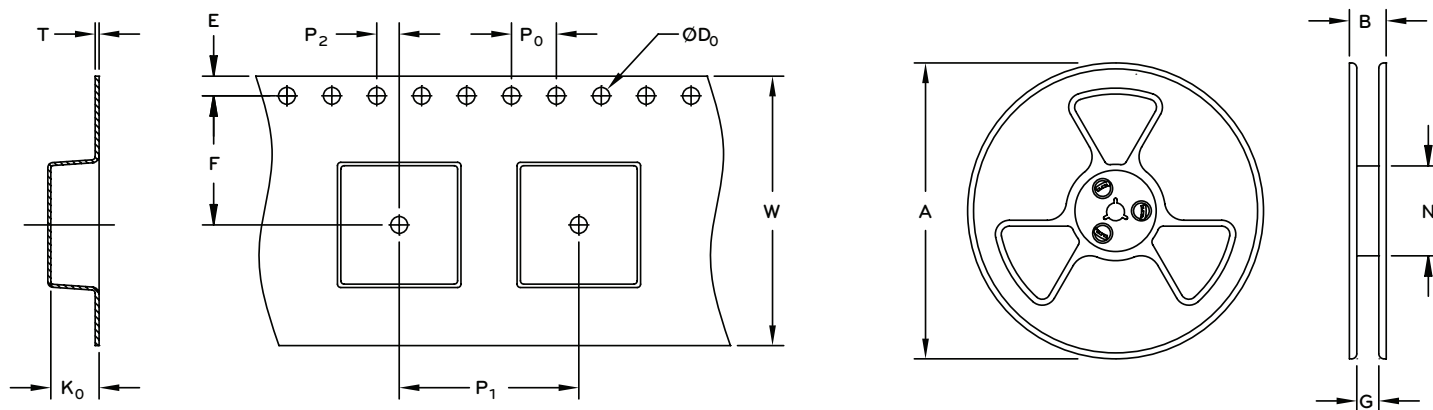
Part Number	A (max)	B (max)	C	D	E	F	G	H	J
PA4330.XXXNLT	2.2 MAX	1.8 MAX	1.0 MAX	(1.5)	(0.6)	(0.8)	(1.70)	(0.7)	(0.7)

Shielded Drum Core Inductor

PA4330.XXXNLT Series



TAPE & REEL INFO



SURFACE MOUNTING TYPE, REEL/TAPE LIST

TYPE	REEL SIZE (mm)				TAPE SIZE (mm)									QTY
	A	B	G	N	E	F	D ₀	P	P ₀	P ₂	W	T	K ₀	PCS/REEL
PA4330.XXXNLT	Ø178	14.4	8.4	58	1.75	3.5	1.5	4	4	2	8	0.25	1.2	2000

For More Information

Pulse Worldwide Headquarters

12220 World Trade Drive
San Diego, CA 92128
U.S.A.

Tel: 858 674 8100
Fax: 858 674 8262

Pulse Europe

Zeppelinstrasse 15
71083 Herrenberg
Germany

Tel: 49 7032 7806 0
Fax: 49 7032 7806 12

Pulse China Headquarters

B402, Shenzhen Academy of
Aerospace Technology Bldg.
10th Kejinan Road
High-Tech Zone
Nanshan District
Shenzhen, PR China 518057

Tel: 86 755 33966678
Fax: 86 755 33966700

Pulse North China

Room 2704/2705
Super Ocean Finance Ctr.
2067 Yan An Road West
Shanghai 200336
China

Tel: 86 21 62787060
Fax: 86 2162786973

Pulse South Asia

135 Joo Seng Road
#03-02
PM Industrial Bldg.
Singapore 368363

Tel: 65 6287 8998
Fax: 65 6287 8998

Pulse North Asia

3F, No. 198
Zhongyuan Road
Zhongli City
Taoyuan County 320
Taiwan R. O. C.

Tel: 886 3 4356768
Fax: 886 3 4356823 (Pulse)
Fax: 886 3 4356820 (FRE)

Performance warranty of products offered on this data sheet is limited to the parameters specified. Data is subject to change without notice. Other brand and product names mentioned herein may be trademarks or registered trademarks of their respective owners. © Copyright, 2015. Pulse Electronics, Inc. All rights reserved.