



Chipsmall Limited consists of a professional team with an average of over 10 year of expertise in the distribution of electronic components. Based in Hongkong, we have already established firm and mutual-benefit business relationships with customers from,Europe,America and south Asia,supplying obsolete and hard-to-find components to meet their specific needs.

With the principle of "Quality Parts,Customers Priority,Honest Operation,and Considerate Service",our business mainly focus on the distribution of electronic components. Line cards we deal with include Microchip,ALPS,ROHM,Xilinx,Pulse,ON,Everlight and Freescale. Main products comprise IC,Modules,Potentiometer,IC Socket,Relay,Connector.Our parts cover such applications as commercial,industrial, and automotives areas.

We are looking forward to setting up business relationship with you and hope to provide you with the best service and solution. Let us make a better world for our industry!



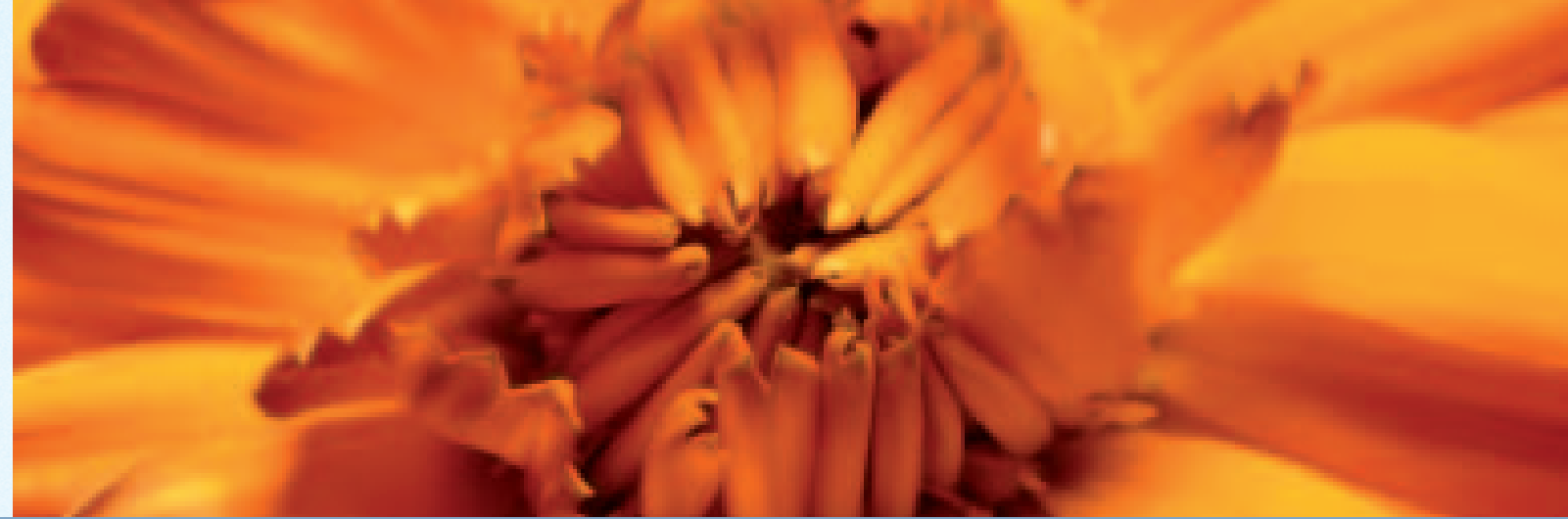
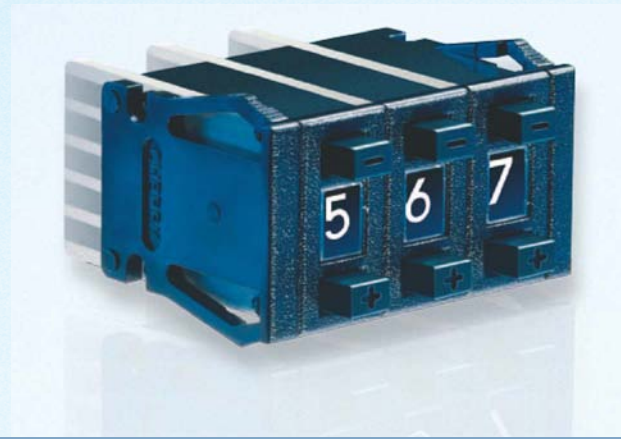
Contact us

Tel: +86-755-8981 8866 Fax: +86-755-8427 6832

Email & Skype: info@chipsmall.com Web: www.chipsmall.com

Address: A1208, Overseas Decoration Building, #122 Zhenhua RD., Futian, Shenzhen, China





Series PA

Technical specifications

Operating force	ca 300cN (with tactile feeling)
Contact resistance	0,1 Ω max
Insulating resistance	10 ⁹ M Ω
Dielectric strength	500V ~
Electrical rating (ohmic resistance)	0,1 A/50 V \approx
Max. current	0,5 A (not switchable)
Temperature	-20 to +80 °C
Life cycle (mechanical)	10 ⁶ operations
Shock	50g, 11 ms
Vibration	15g, 10-2.000Hz
Weight	ca. 2g
Materials:	
Housing material	PPO (Noryl)
Contacts	High-quality gold alloy
Printed circuit board	G 10 (FR 4), optical fibre-reinforced circuit board, copper-plated; Au over Ni
Mounting	Front-mounting, snap-in endcaps. Mounting of units through integrated pins.
Stops	setting through factory only
Terminal	Q.C. terminal gold-plated

Features

- Selector switches with very small dimensions for front-mounting
- 10 or 16 switching positions. Housing black
- Extended PCB for mounting of additional components available.
- Connection with Q.C. terminal

Codes (2)

Switching position	Code	Readout	Truth table-no. (refer to description)	PCB terminal	PCB terminal, short	PCB terminal, extended	Code
10	Decimal	0-9	2	1/8	•	•	A
10	BCD	0-9	1	2/9	•	•	C
10	BCD Complement	0-9	11	5	•		E
10	BCD + Complement	0-9	8	4	•		F
10	Single pole repeating	+/- abw.	4	6/13	•	•	P
16	Hexadecimal	0-15	5	3/10	•	•	G
16	Hexadecimal	0-9, A-F	5	3/10	•	•	H

Terminals (3)

Terminals	Code
Q.C. terminal	A

PCB versions	Code
short	3
extended	4

Accessories

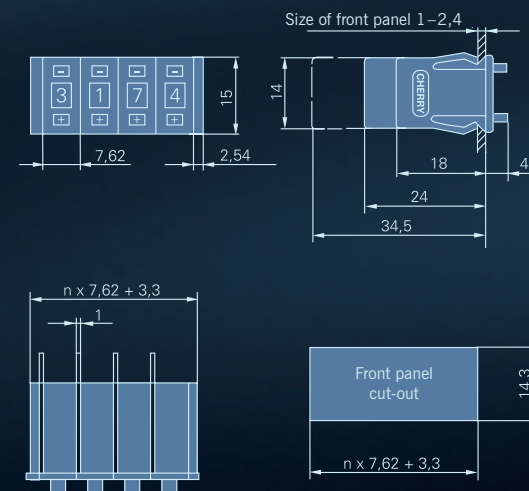
	Stock codes
Endcap left	609-0801
Endcap right	609-0799
Housing, 7,62mm	609-0797
Spacer, 2,54mm	609-0803

PCB versions (4)

For detailed information and the layout of the details described above, please do not hesitate to ask for our technical specifications and drawing.

Switching position	Window cutout	Number height
10	B = 3,6 H = 4	3
16	B = 3,6 H = 2,5	1,8

Dimensions in mm



PCB terminals

