



Chipsmall Limited consists of a professional team with an average of over 10 year of expertise in the distribution of electronic components. Based in Hongkong, we have already established firm and mutual-benefit business relationships with customers from,Europe,America and south Asia,supplying obsolete and hard-to-find components to meet their specific needs.

With the principle of “Quality Parts,Customers Priority,Honest Operation,and Considerate Service”,our business mainly focus on the distribution of electronic components. Line cards we deal with include Microchip,ALPS,ROHM,Xilinx,Pulse,ON,Everlight and Freescale. Main products comprise IC,Modules,Potentiometer,IC Socket,Relay,Connector.Our parts cover such applications as commercial,industrial, and automotives areas.

We are looking forward to setting up business relationship with you and hope to provide you with the best service and solution. Let us make a better world for our industry!



Contact us

Tel: +86-755-8981 8866 Fax: +86-755-8427 6832

Email & Skype: info@chipsmall.com Web: www.chipsmall.com

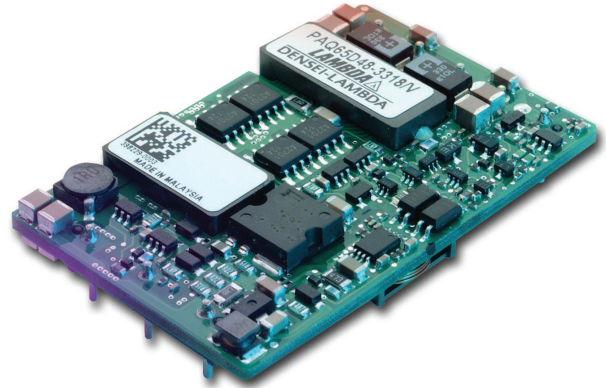
Address: A1208, Overseas Decoration Building, #122 Zhenhua RD., Futian, Shenzhen, China



High Efficiency Dual Output Quarter Brick DC-DC Converters

Features

- ◆ Industry Standard Package
- ◆ Low voltage outputs to 1.8V
- ◆ Output Currents up to 17A
- ◆ Designed for telecom standards
- ◆ Output voltage adjustment - independent or tracking (/C)
- ◆ Remote On / Off
- ◆ High Efficiency
- ◆ ASIC Design
- ◆ No minimum load



Key Market Segments & Applications

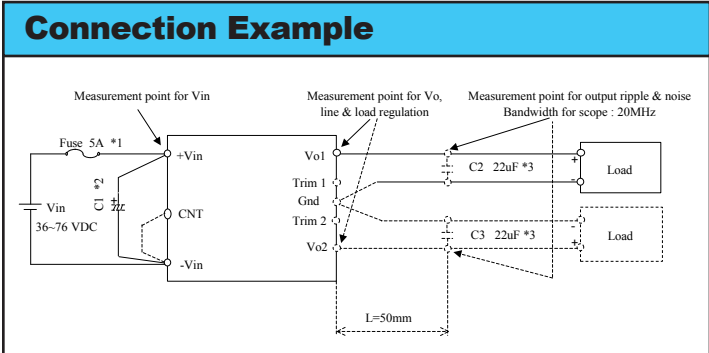
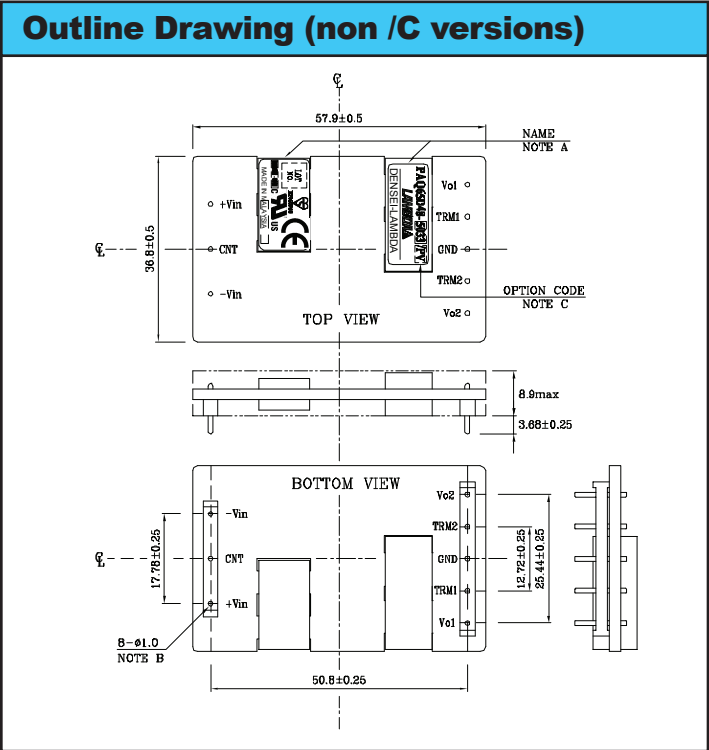
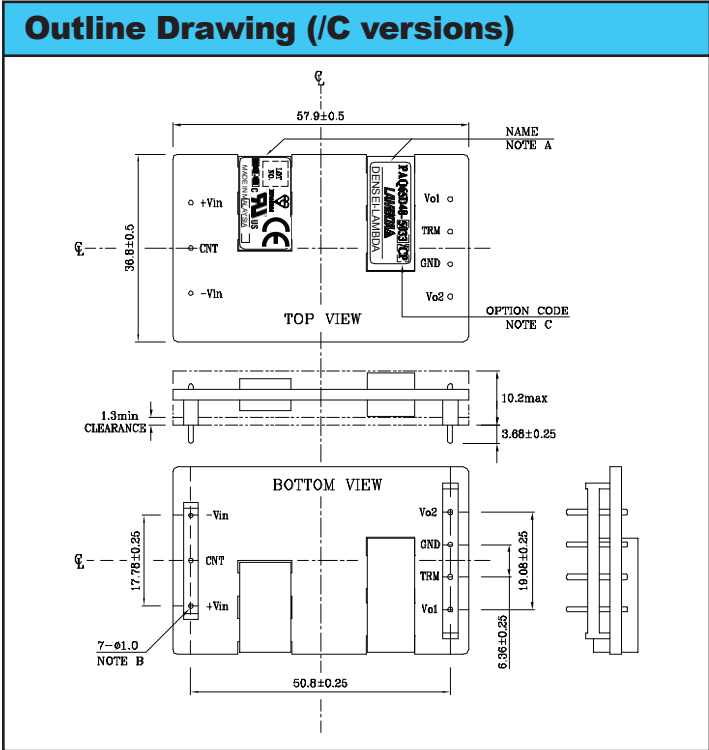
Specifications									
Model		PAQ65D482518		PAQ65D483318		PAQ65D483325		PAQ65D485033	
		V01	V02	V01	V02	V01	V02	V01	V02
Nominal Output Voltage	VDC	2.5	1.8	3.3	1.8	3.3	2.5	5.0	3.3
Output Current (Max)	A	15	17	15	17	15	17	13	16
Output Current (Max total)	A	Io1 + Io2 = 18							
Max Output Power	W	37.5		49.5		49.5		65.0	
Efficiency (Typ)	%	86.0		86.0		87.0		90.0	
Input Voltage range	VDC	36 - 76V							
Input Current (typ)	A	0.82		0.97		1.10		1.36	
Output Voltage Accuracy	%	±2							
Output Voltage Trim Range (1)	VDC	2.25-2.75	1.62-1.98	2.97-3.63	1.62-1.98	2.97-3.63	2.25-2.75	4.50-5.50	2.97-3.63
Max Ripple & Noise	mV	75	75	100	75	100	75	100	100
Max Line Regulation	mV	± 6.6							
Max Load Regulation	mV	± 16.5							
Overcurrent Protection (OCP) (2)	%	105 - 160% (See options table for either manual or automatic reset)							
Overvoltage Protection (OVP)	%	120 - 140% (See options table for either manual or automatic reset)							
Remote On / Off	%	Low = ON, Open = OFF /P option; Low = OFF, Open = ON (See options)							
Operating Temperature	°C	-40°C to +85°C							
Operating & Storage Humidity	-	5 - 95% RH, Non condensing							
Storage Temperature	°C	-40°C to +100°C							
Cooling	-	Convection, or forced air							
I/O Isolation Voltage	-	Input to Output 1.5k VDC for 1 min.							
Vibration (non operating)	-	10 - 55Hz (1 minute), amplitude 0.825mm (49m/s ² max), X, Y, Z 1 hour each							
Shock	m/s ²	196.1 m/s ²							
Safety Agency Approvals	-	UL1950, CSA950, EN60950, & CE							
Weight (Typ)	g	40							
Size (WxHxD)	mm	36.8 x 8.9 x 57.9 (36.8 x 10.2 x 57.9 /C version)							
Warranty	yr	2 Years							

Note: See Installation Manual for full details, test methods of parameters and application notes.

1. Specify /C option for one trim pin - tracking outputs, leave blank for individual adjustment

2. Io1 + Io2

Not recommended for new designs



Options

Suffix	Trim Pin	On/Off Logic	OVP / OCP
Blank	Independent	Negative, short = ON	Manual Reset
/ P	-	Positive, Open = ON	-
/ V	-	-	Auto-restart
/ C	Tracking	-	-

/V, /PV, /CV, /CPV are US Standard US stock items
 Note suffix letter order : /C followed by P followed by V

Other DC-DC Products

X	10, 15, & 20W 24V & 48VDC input DC-DC converters
PAF	500 & 600W Full brick DC-DC
PAH	50W to 200W Half brick DC-DC, single & dual outputs
PAQ	Up to 100W Quarter brick DC-DC, single outputs
SX	20W surface mount 24V & 48VDC-DC

For Additional Information, please visit us.tdk-lambda.com/lp/products/paq-series.htm



Not recommended for new designs