



Chipsmall Limited consists of a professional team with an average of over 10 year of expertise in the distribution of electronic components. Based in Hongkong, we have already established firm and mutual-benefit business relationships with customers from,Europe,America and south Asia,supplying obsolete and hard-to-find components to meet their specific needs.

With the principle of “Quality Parts,Customers Priority,Honest Operation,and Considerate Service”,our business mainly focus on the distribution of electronic components. Line cards we deal with include Microchip,ALPS,ROHM,Xilinx,Pulse,ON,Everlight and Freescale. Main products comprise IC,Modules,Potentiometer,IC Socket,Relay,Connector.Our parts cover such applications as commercial,industrial, and automotives areas.

We are looking forward to setting up business relationship with you and hope to provide you with the best service and solution. Let us make a better world for our industry!



Contact us

Tel: +86-755-8981 8866 Fax: +86-755-8427 6832

Email & Skype: info@chipsmall.com Web: www.chipsmall.com

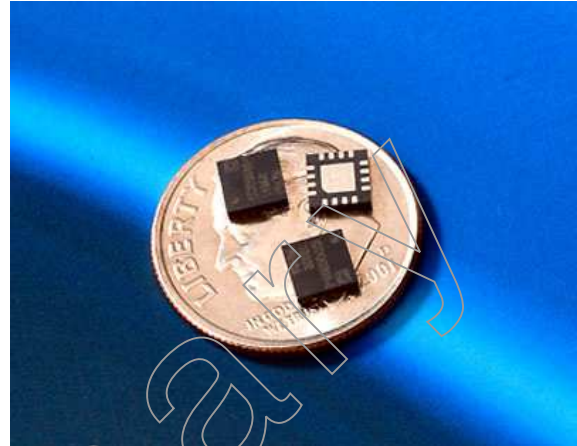
Address: A1208, Overseas Decoration Building, #122 Zhenhua RD., Futian, Shenzhen, China



5.0-14.0 GHz GaAs MMIC Packaged Driver Amplifier

Features

- ✕ 20 dB Gain
- ✕ 11 dBm P1dB
- ✕ 3x3 QFN Package
- ✕ Single Power Supply
- ✕ 5-7 V, 90 mA Self Bias
- ✕ On-Chip ESD Protection



Circuit Description

Mimix Broadband's 3 stage 5.0 to 14.0 GHz driver amplifier is packaged in surface mount 3x3 QFN package. The device is a self-biased, single supply design with 20 dB gain and 11 dBm P1dB. This MMIC uses Mimix Broadband's optical pHEMT process.

Absolute Maximum Ratings

| | |
|----------------------------|-------------------|
| Supply Voltage | +8 V |
| RF Input Power | +10 dBm |
| Storage Temperature (Tstg) | -55 °C to +125 °C |
| Junction Temperature | 175 °C |
| Operating Temperature | -40 °C to +85°C |

Operating this device beyond any of these parameters may cause permanent damage.

Electrical Characteristics (T=25°C)

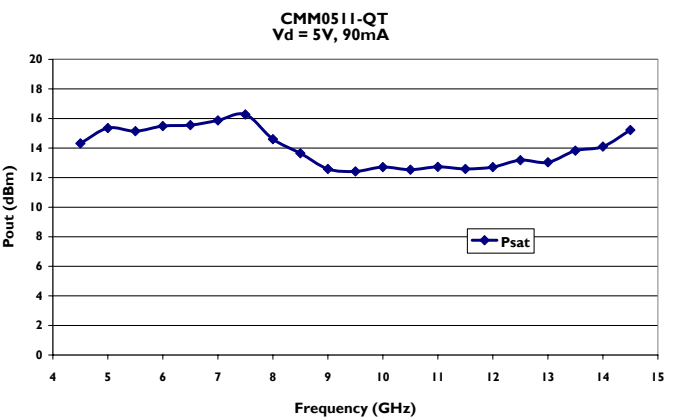
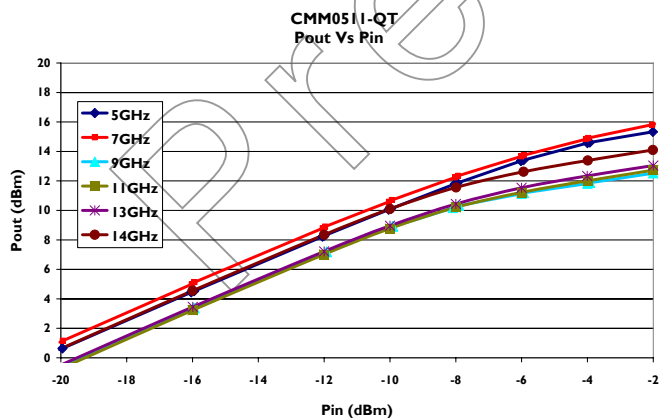
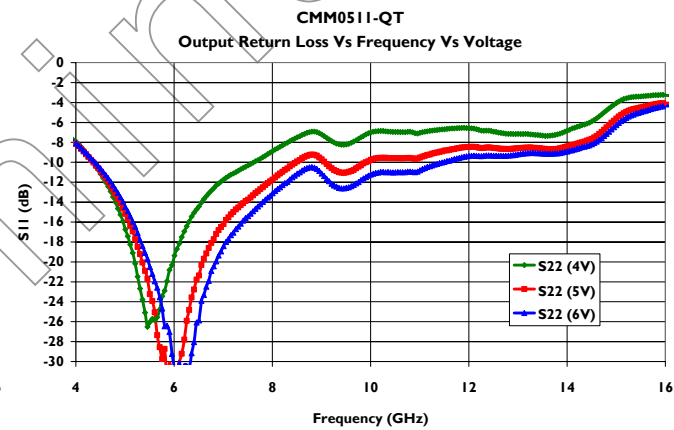
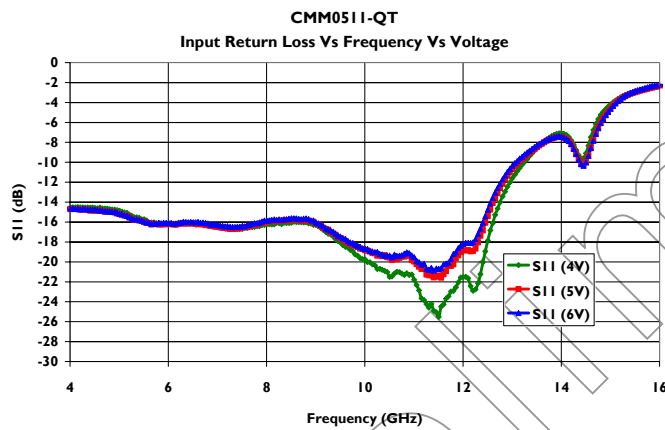
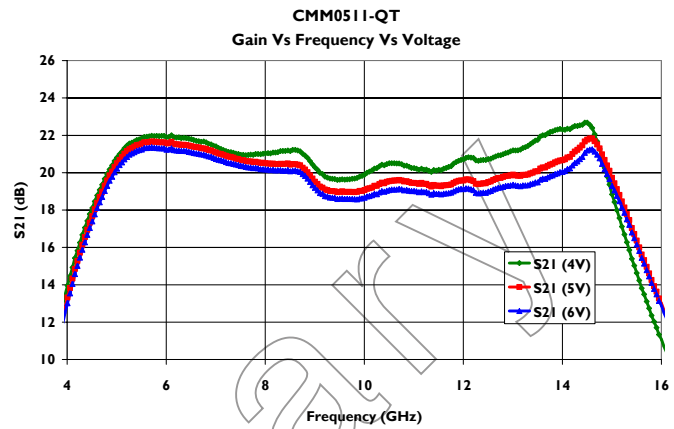
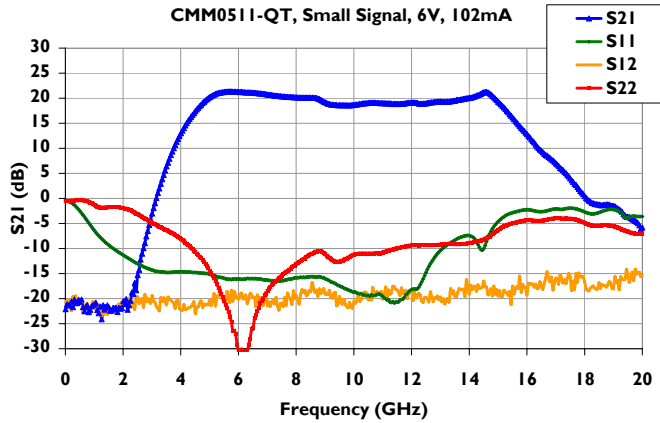
| Parameter | Units | Min. | Typ. | Max. |
|-------------------|-------|------|------|------|
| Frequency Range | GHz | 5 | - | 14 |
| Gain | dB | - | 20 | - |
| Input Return Loss | | - | -12 | - |
| Output P1dB | dBm | - | 11 | - |
| Output IP3 | dBm | - | 22 | - |
| Supply Voltage | V | - | 5 | 7 |
| Current | mA | | 90 | 120 |

Typical Parameters (6V, 90 mA)

| Parameter | Typical | | | | | |
|----------------|---------|------|------|------|------|------|
| | 5 | 7 | 9 | 11 | 13 | 14 |
| Frequency | 5 | 7 | 9 | 11 | 13 | 14 |
| Gain | 20.5 | 20.5 | 18.5 | 18.5 | 18.5 | 20 |
| IP Return Loss | -15 | -15 | -17 | -20 | -10 | -8 |
| Op Return Loss | -14.5 | -15 | -11 | -11 | -9 | -9 |
| P1dB | 13 | 13 | 10 | 10 | 10 | 11.5 |
| OIP3 | 24.0 | 24.0 | 22.0 | 20.0 | 21.0 | 20.5 |

5.0-14.0 GHz GaAs MMIC Packaged Driver Amplifier

Driver Amplifier Measurements



5.0-14.0 GHz GaAs MMIC Packaged Driver Amplifier

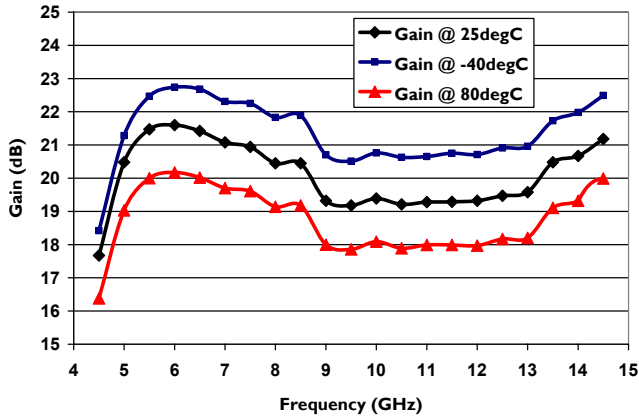


March 2010 - Rev 13-Mar-10

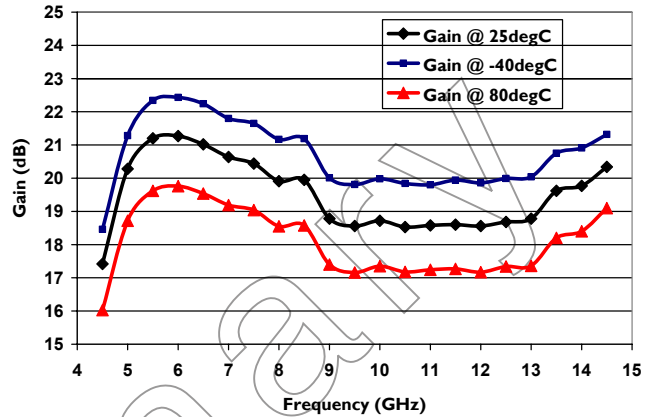
CMM0511-QT
RoHS

Driver Amplifier Measurements (cont.)

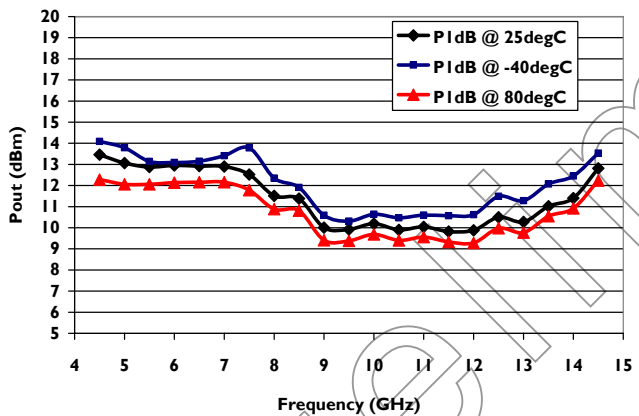
Gain Vs Frequency Vs Temperature
5V, 90mA



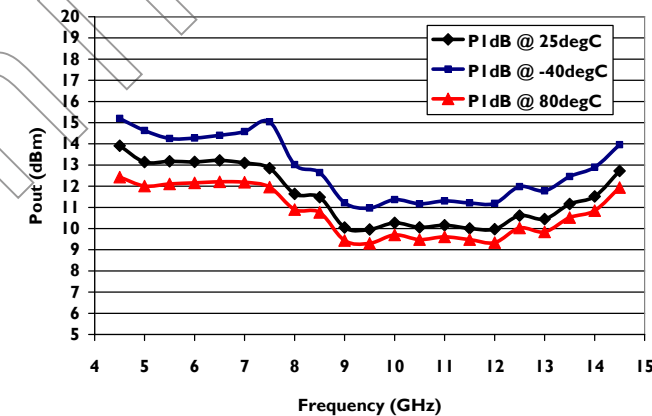
Gain Vs Frequency Vs Temperature
6V, 90mA



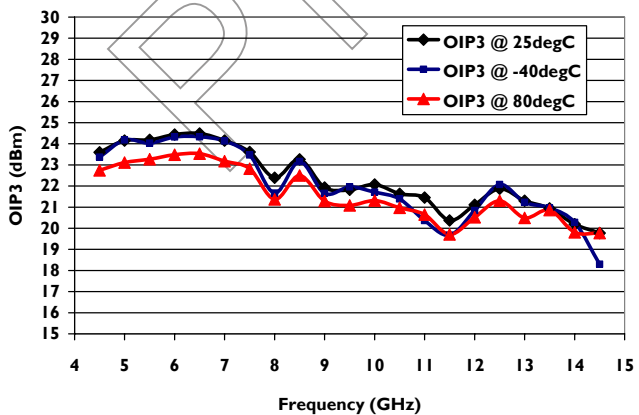
PI dB Vs Frequency Vs Temperature
5V, 90mA



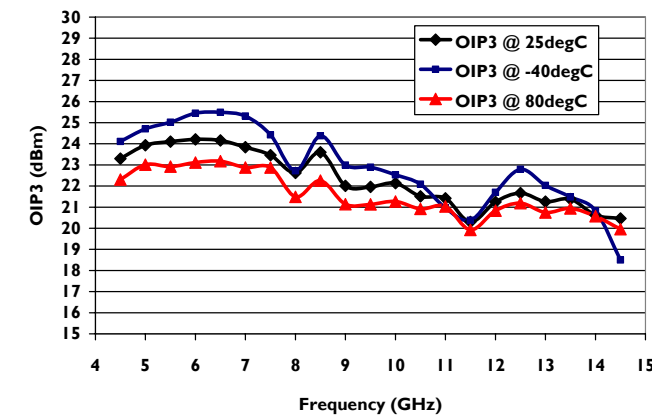
PI dB Vs Frequency Vs Temperature
6V, 90mA



OIP3 Vs Frequency Vs Temperature
5V, 90mA

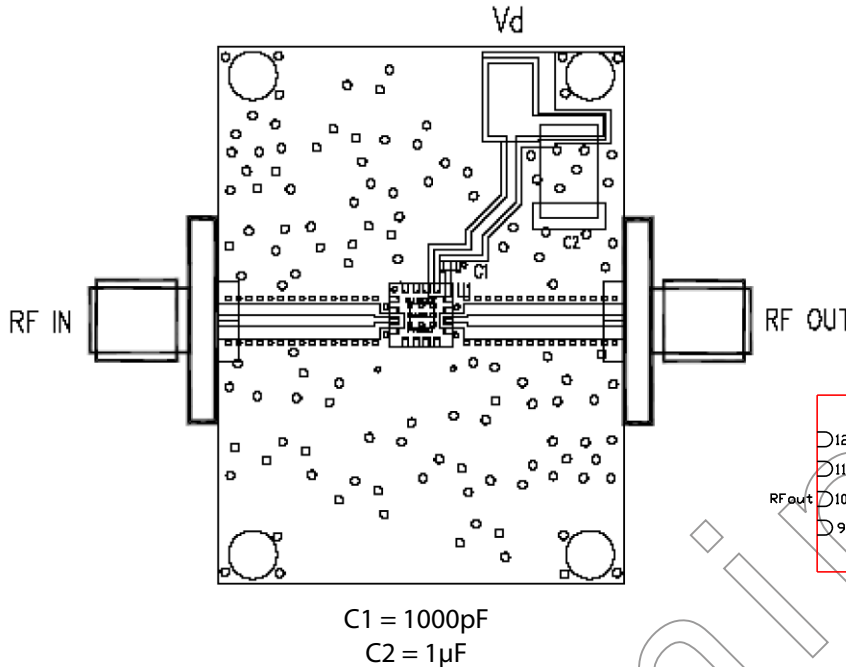


OIP3 Vs Frequency Vs Temperature
6V, 90mA



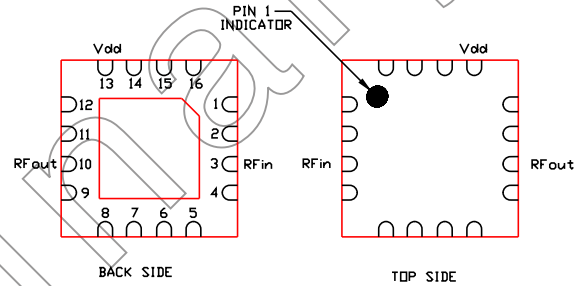
5.0-14.0 GHz GaAs MMIC Packaged Driver Amplifier

Evaluation Board Layout



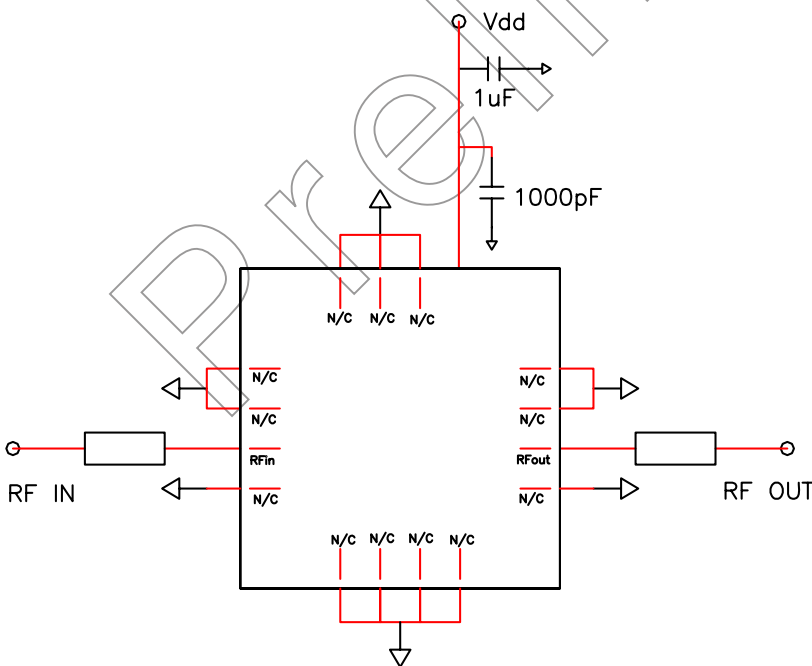
Package Pin-out Table

| Pin Designator | Description |
|------------------------------------|-------------|
| 1,2,4,5,6,7,8,9, 11,12,14,15,16 | NC |
| 3 | RF Input |
| 10 | RF Output |
| 13 | Vd |



We recommend to ground all non-connected pins and to have as many via holes as possible under the ground paddle.

Evaluation Board Schematic



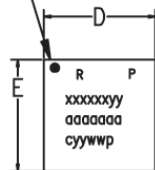
5.0-14.0 GHz GaAs MMIC Packaged Driver Amplifier

March 2010 - Rev 13-Mar-10

Package Outline and Assembly

QT (3x3 mm)

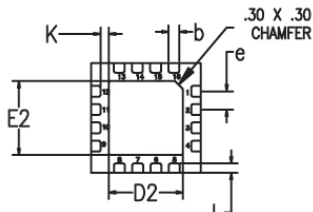
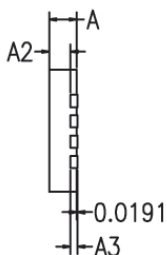
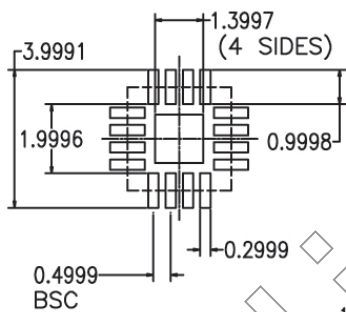
Pin 1 Dot
By marking



TOP VIEW

MARKINGS:
PIN 1/BOM REV/PLATING
MIMIX PART/MODEL NO.
WAFER LOT NUMBER
DATE CODE

RECOMMENDED SOLDER PAD PITCH AND DIMENSIONS



BOTTOM VIEW

Note:

1. ALL DIMENSIONS ARE IN mm.

| | MIN | TYP | MAX |
|----|------|----------|------|
| A | 0.80 | 0.90 | 1.00 |
| A3 | | 0.20 REF | |
| A2 | 0.90 | 0.65 | 1.00 |
| b | 0.20 | 0.25 | 0.30 |
| K | 0.20 | - | - |
| D | | 3.00 BSC | |
| E | | 3.00 BSC | |
| e | | 0.50 | |
| D2 | 1.50 | 1.65 | 1.80 |
| E2 | 1.50 | 1.65 | 1.80 |
| L | 0.16 | 0.26 | 0.36 |

1. VIEWS ARE NOT TO SCALE: USE DIMENSIONS AND TABLE.

5.0-14.0 GHz GaAs MMIC Packaged Driver Amplifier

Handling and Assembly Information

CAUTION! - Mimix Broadband MMIC Products contain gallium arsenide (GaAs) which can be hazardous to the human body and the environment. For safety, observe the following procedures:

- Do not ingest.
- Do not alter the form of this product into a gas, powder, or liquid through burning, crushing, or chemical processing as these by-products are dangerous to the human body if inhaled, ingested, or swallowed.
- Observe government laws and company regulations when discarding this product. This product must be discarded in accordance with methods specified by applicable hazardous waste procedures.

Life Support Policy - Mimix Broadband's products are not authorized for use as critical components in life support devices or systems without the express written approval of the President and General Counsel of Mimix Broadband. As used herein: (1) Life support devices or systems are devices or systems which, (a) are intended for surgical implant into the body, or (b) support or sustain life, and whose failure to perform when properly used in accordance with instructions for use provided in the labeling, can be reasonably expected to result in a significant injury to the user. (2) A critical component is any component of a life support device or system whose failure to perform can be reasonably expected to cause the failure of the life support device or system, or to affect its safety or effectiveness.

Package Attachment - This packaged product from Mimix Broadband is provided as a rugged surface mount package compatible with high volume solder installation. Vacuum tools or other suitable pick and place equipment may be used to pick and place this part. Care should be taken to ensure that there are no voids or gaps in the solder connection so that good RF, DC and ground connections are maintained. Voids or gaps can eventually lead not only to RF performance degradation, but reduced reliability and life of the product due to thermal stress.

Typical Reflow Profiles

| Reflow Profile | SnPb | Pb Free |
|---------------------------------|-------------------------|-------------------------|
| Ramp Up Rate | 3-4 °C/sec | 3-4 °C/sec |
| Activation Time and Temperature | 60-120 sec @ 140-160 °C | 60-180 sec @ 170-200 °C |
| Time Above Melting Point | 60-150 sec | 60-150 sec |
| Max Peak Temperature | 240 °C | 265 °C |
| Time Within 5 °C of Peak | 10-20 sec | 10-20 sec |
| Ramp Down Rate | 4-6 °C/sec | 4-6 °C/sec |

Factory Automation and Identification

| Mimix Designator | Package Type | Number of leads offered | W Tape Width | P ₁ Component Pitch | P ₀ Hole Pitch | Reel Diameter | Units per Reel |
|------------------|--------------|-------------------------|--------------|--------------------------------|---------------------------|---------------|----------------|
| -QT | QFN (3x3mm) | 16 | 12mm | 8mm | 4mm | 329mm (13in) | 2000 |

Component Orientation: Parts are to be oriented with the PIN 1 closest to the tape's round sprocket holes on the tape's trailing edge.

Note: Tape and Reel packaging is ordered with a -000T suffix. Package is available in 500 unit reels through designated sales channels. Minimum order quantities should be discussed with your local sales representative.

Mimix Lead-Free RoHS Compliant Program - Mimix has an active program in place to meet customer and governmental requirements for eliminating lead (Pb) and other environmentally hazardous materials from our products. All Mimix RoHS compliant components are form, fit and functional replacements for their non-RoHS equivalents. Lead plating of our RoHS compliant parts is 100% matte tin (Sn) over copper alloy and is backwards compatible with current standard SnPb low-temperature reflow processes as well as higher temperature (260°C reflow) "Pb Free" processes.

Ordering Information

Part Number for Ordering

CMM0511-QT-0G00
CMM0511-QT-0G0T
PB-CMM0511-QT-0000

Description

Matte Tin plated RoHS compliant 3x3 16L QFN surface mount package in bulk quantity
Matte Tin plated RoHS compliant 3x3 16L QFN surface mount package in tape and reel
CMM0511-QT evaluation board



Caution: ESD Sensitive
Appropriate precautions in handling, packaging
and testing devices must be observed.

Proper ESD procedures should be followed when handling this device.