



Chipsmall Limited consists of a professional team with an average of over 10 year of expertise in the distribution of electronic components. Based in Hongkong, we have already established firm and mutual-benefit business relationships with customers from,Europe,America and south Asia,supplying obsolete and hard-to-find components to meet their specific needs.

With the principle of “Quality Parts,Customers Priority,Honest Operation,and Considerate Service”,our business mainly focus on the distribution of electronic components. Line cards we deal with include Microchip,ALPS,ROHM,Xilinx,Pulse,ON,Everlight and Freescale. Main products comprise IC,Modules,Potentiometer,IC Socket,Relay,Connector.Our parts cover such applications as commercial,industrial, and automotives areas.

We are looking forward to setting up business relationship with you and hope to provide you with the best service and solution. Let us make a better world for our industry!



Contact us

Tel: +86-755-8981 8866 Fax: +86-755-8427 6832

Email & Skype: info@chipsmall.com Web: www.chipsmall.com

Address: A1208, Overseas Decoration Building, #122 Zhenhua RD., Futian, Shenzhen, China

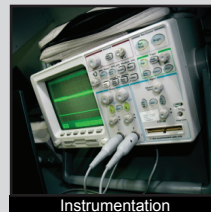


PB400 SERIES PUSHBUTTON SWITCH

ANTI-VANDAL SWITCHES
 DETECTOR SWITCHES
 DIP SWITCHES
 KEYLOCK SWITCHES
 NAVIGATION SWITCHES
PUSHBUTTON SWITCHES
 ROCKER SWITCHES
 ROTARY SWITCHES
 SLIDE SWITCHES
 SNAP ACTION SWITCHES
 TACTILE SWITCHES
 TOGGLE SWITCHES
 CAP OPTIONS



APPLICATIONS / MARKETS



RoHS

SPECIFICATIONS

Electrical Rating: 3A @ 30 VDC
Electrical Life: 6,000 Cycles
Contact Resistance: 30mΩ Max. Initial
Insulation Resistance: 500MΩ Min. @ 500VDC
Dielectric Strength: 500VAC for 1 minute
Operating Temperature: -5°C to 60°C
Terminal: Copper, Silver Plated
Travel: Switch to make: 1.8mm
 Latch: 2.2mm (Latching)
 Full Actuation: 3.2mm
Contact Arrangement: DPST
Actuation Force: 3N~7N

FEATURES & BENEFITS

- Low cost
- Right Angle pushbutton switch
- DPST
- Momentary or Latching function
- 3.2mm travel
- Optional black cap

PART NUMBER CONFIGURATOR

Series



PB400

Mechanical Configuration



EE - Latching
 OA - Momentary

Contact Material



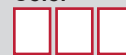
Q - Silver

Cap



X - No Cap
 R1 - Cap (8.8mm)

Cap Color



BLK - Black

Specifications subject to change without notice 12.19.2017



E-SWITCH®

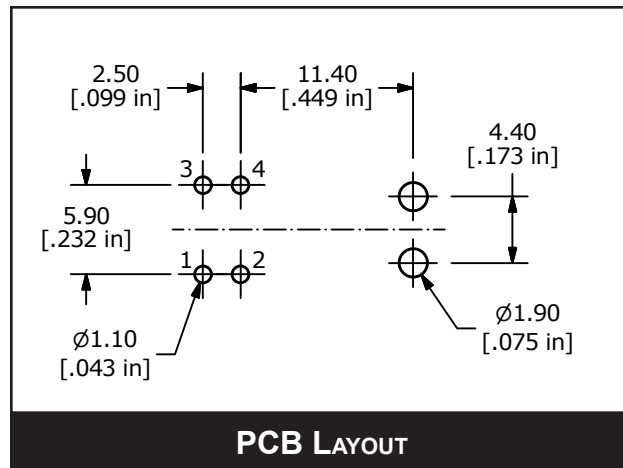
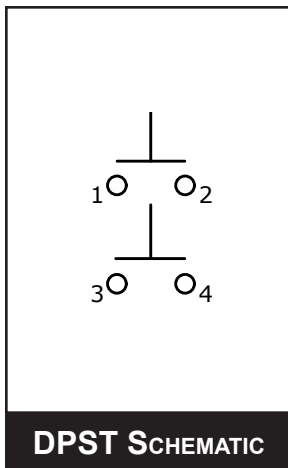
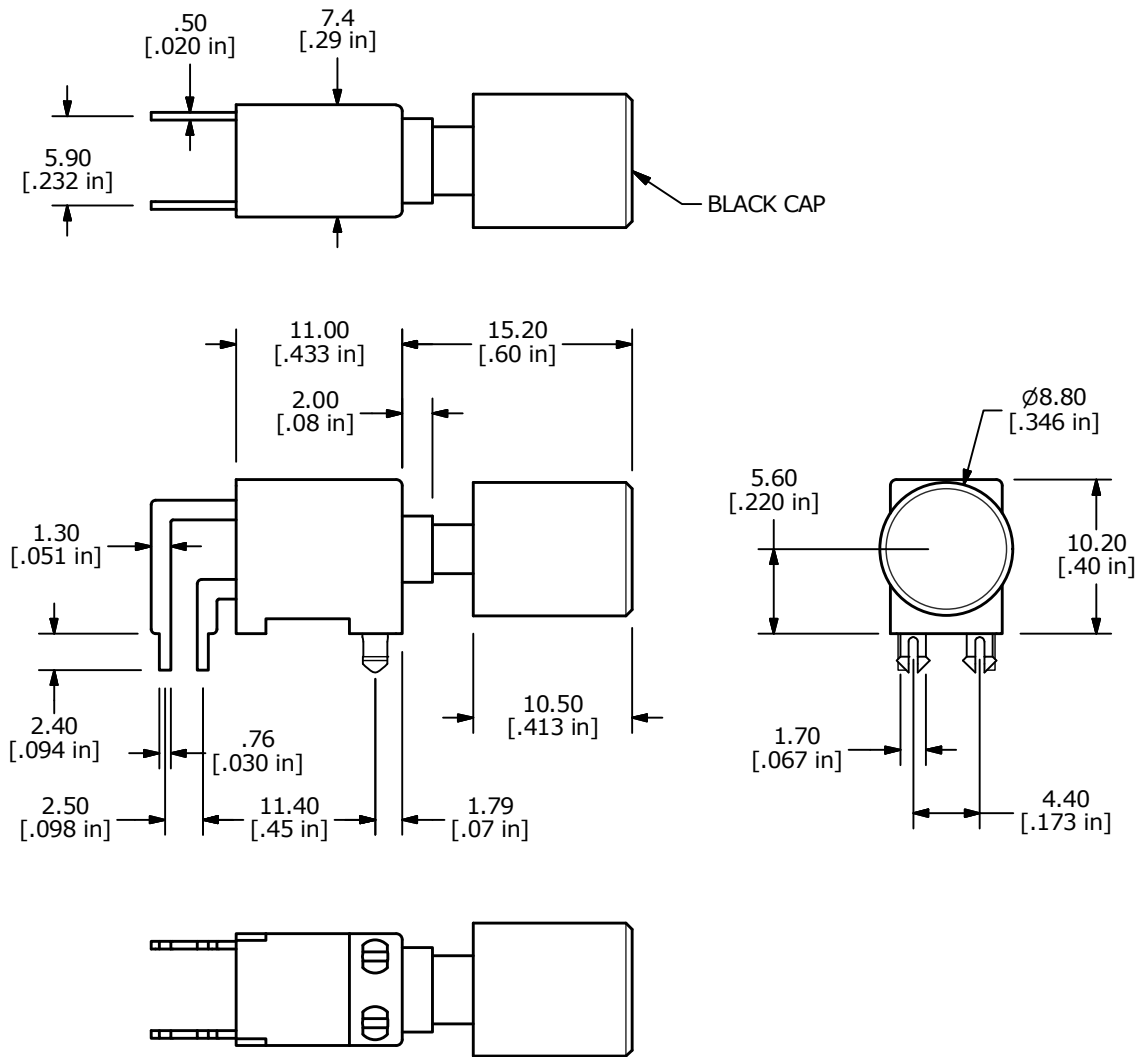
www.e-switch.com

800.867.2717

1

PB400 SERIES PUSHBUTTON SWITCH

BODY DIMENSIONS - WITH CAP



- ANTI-VANDAL SWITCHES
- DETECTOR SWITCHES
- DIP SWITCHES
- KEYLOCK SWITCHES
- NAVIGATION SWITCHES
- PUSHBUTTON SWITCHES**
- ROCKER SWITCHES
- ROTARY SWITCHES
- SLIDE SWITCHES
- SNAP ACTION SWITCHES
- TACTILE SWITCHES
- TOGGLE SWITCHES
- CAP OPTIONS

PB400 SERIES PUSHBUTTON SWITCH

BODY DIMENSIONS - WITHOUT CAP

