



Chipsmall Limited consists of a professional team with an average of over 10 year of expertise in the distribution of electronic components. Based in Hongkong, we have already established firm and mutual-benefit business relationships with customers from,Europe,America and south Asia,supplying obsolete and hard-to-find components to meet their specific needs.

With the principle of "Quality Parts,Customers Priority,Honest Operation,and Considerate Service",our business mainly focus on the distribution of electronic components. Line cards we deal with include Microchip,ALPS,ROHM,Xilinx,Pulse,ON,Everlight and Freescale. Main products comprise IC,Modules,Potentiometer,IC Socket,Relay,Connector.Our parts cover such applications as commercial,industrial, and automotives areas.

We are looking forward to setting up business relationship with you and hope to provide you with the best service and solution. Let us make a better world for our industry!



Contact us

Tel: +86-755-8981 8866 Fax: +86-755-8427 6832

Email & Skype: info@chipsmall.com Web: www.chipsmall.com

Address: A1208, Overseas Decoration Building, #122 Zhenhua RD., Futian, Shenzhen, China





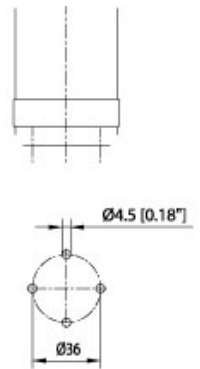
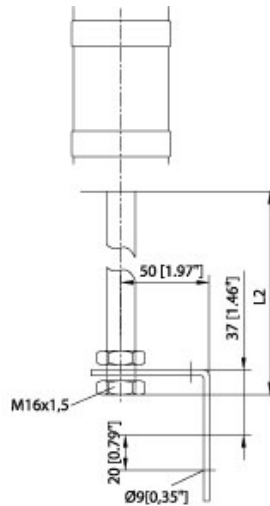
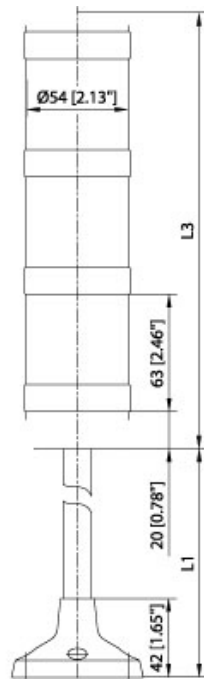
Quality Products. Service Excellence.

Stack Lights *PBR Series*



- Modular design for all indoor and outdoor applications.
- Provides warning signals and displays machine status.
- High level of protection against electric shock with IP 54 rating.
- Separate components for easy ordering to suit every installation application.

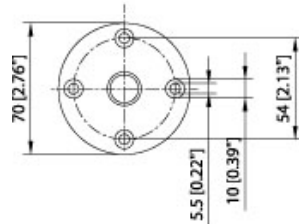
Gallery



Direct Mounting

Part No.	L3
Single module	107mm (4.21in)
2 modules	170mm (6.69in)
3 modules	233mm (9.17in)
4 modules	296mm (11.65in)
5 modules	359mm (14.13in)

Threaded Tubular Stand/Bracket



Tubular Stand/Plinth

Base and Tubes

Part No.	Description			Ship Wt.
		L1	L2	(lbs)
PBR50BC	Base & End Module	-	-	5
PBR50S100	Tubular Stand/Plinth	3.46	-	5
PBR50S250	Tubular Stand/Plinth	9.37	-	5
PBR50T100	Threaded tubular stand/bracket	-	3.07	5

Part No.	Description	L1	L2	Ship Wt. (lbs)
PBR50T250	Threaded tubular stand/bracket	-	8.98	5
PBR50T400	Threaded tubular stand/bracket	-	14.13	5

Modules

Part No.	Description	Ship Wt. (lbs)
PBR50CLCL	Continuous beam module, transparent	1
PBR50CLYE	Continuous beam module, yellow	1
PBR50CLAM	Continuous beam module, amber	1
PBR50CLRE	Continuous beam module, red	1
PBR50CLGR	Continuous beam module, green	1
PBR50CLBL	Continuous beam module, blue	1
PBR50BLYE24V	Blinking module, yellow	1
PBR50BLRE24V	Blinking module, red	1
PBR50BLGR24V	Blinking module, green	1

Gaskets, Bulbs and Accessories

Part No.	Description	Ship Wt. (lbs)
PBR50MG	Replacement gasket for light module & base module	1
PBR50TG	Replacement gasket for mounting tube with plinth	1
PBR50BG	Replacement gasket for direct mounting IP 65	1
PBR50LED24	LED light bulb 24V/BA 15d	1
PBR50LED115	LED light bulb 115V/BA 15d	1
PBR50L24	Light bulb 24V DC/BA 15d 7W	1
PBR50L115	Light bulb 115V CD/BA 15d 7W	1
PBR50LS	Bulb Remover/Installer	1

Modular Data	Continuous Beam	Blinking Light
Modular Colors	Yellow, Red, Green, Amber, Blue, Transparent	Yellow, Red, Green
Modular Stages	Max. 5	Max. 5)
Angle of Beam	360 degrees	360 degrees
Percentage Duty Cycle	1	1
Rated Power, max.	7W	7W
Rated Power with 5 stages	5W	5W
Lamp Socket	BA 15d	BA 15d
Service life of light bulb/tube	approx. 1500h	approx. 1500h
AC Voltage Rating	230 V, 50/60 Hz, -15% to + 10%	230 V, 50/60 Hz, -15% to +10%
Current Capacity Rating	0.035 A	0.08 A
DC Voltage Rating	24 V, -15% to +20%	24 V, -15% to +20%
Current Capacity Rating	0.3 A	0.25 A

Other Data	
Protection Rating	IP 54
Operating Temperature	-25 o C to +45 o C
Relative Humidity	0.9
Installation	Vertical or Horizontal
	Mounting Stand, tube mounting or direct mounting
Accessories	Gasket for light module + basic module IP 65

Other Data	
	Gasket for tubular stand on plinth IP 65
	Gasket for direct mounting IP 65
	Wall bracket with hood
Weight of Plinth	Stand mounting (w/o module): approx. 220g
	Tube mounting (w/o module): 200g
	Direct mounting (w/o module): 180g
Materials	Modular: polycarbonate, Plinth: ABS, Tube: stainless steel

Data subject to change without notice

© 2017. Hammond Manufacturing Ltd. All rights reserved.