



Chipsmall Limited consists of a professional team with an average of over 10 year of expertise in the distribution of electronic components. Based in Hongkong, we have already established firm and mutual-benefit business relationships with customers from,Europe,America and south Asia,supplying obsolete and hard-to-find components to meet their specific needs.

With the principle of “Quality Parts,Customers Priority,Honest Operation,and Considerate Service”,our business mainly focus on the distribution of electronic components. Line cards we deal with include Microchip,ALPS,ROHM,Xilinx,Pulse,ON,Everlight and Freescale. Main products comprise IC,Modules,Potentiometer,IC Socket,Relay,Connector.Our parts cover such applications as commercial,industrial, and automotives areas.

We are looking forward to setting up business relationship with you and hope to provide you with the best service and solution. Let us make a better world for our industry!



Contact us

Tel: +86-755-8981 8866 Fax: +86-755-8427 6832

Email & Skype: info@chipsmall.com Web: www.chipsmall.com

Address: A1208, Overseas Decoration Building, #122 Zhenhua RD., Futian, Shenzhen, China



PART
NAME

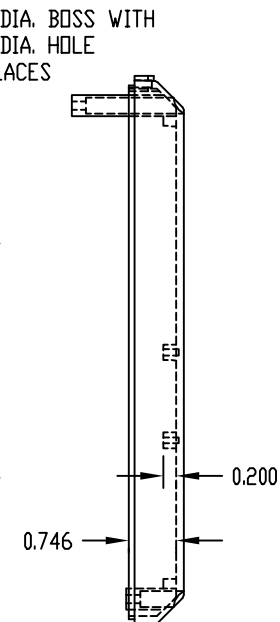
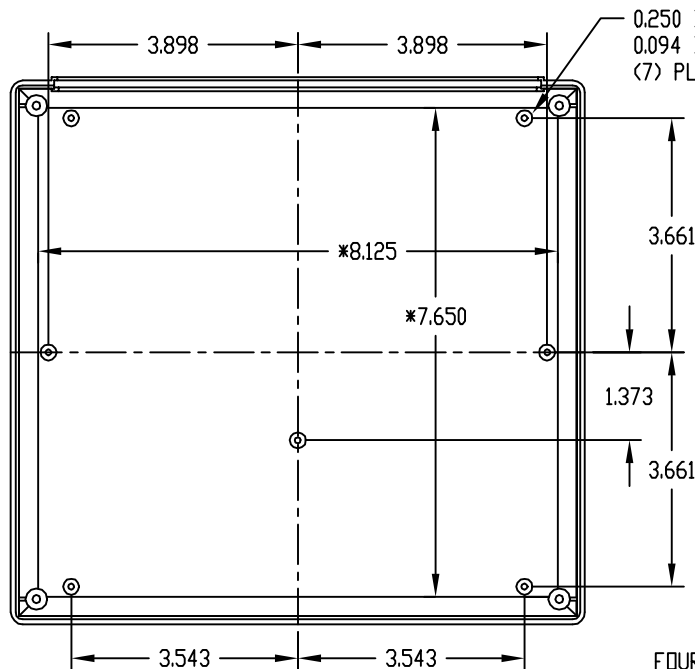
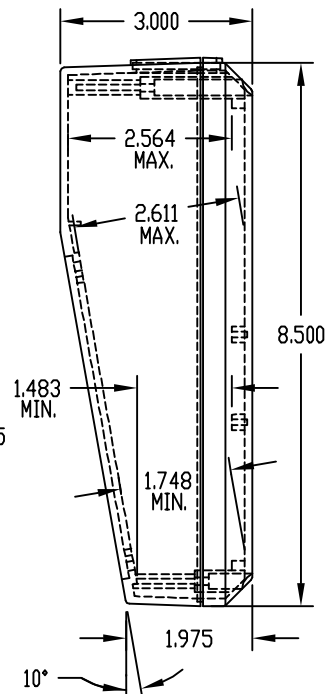
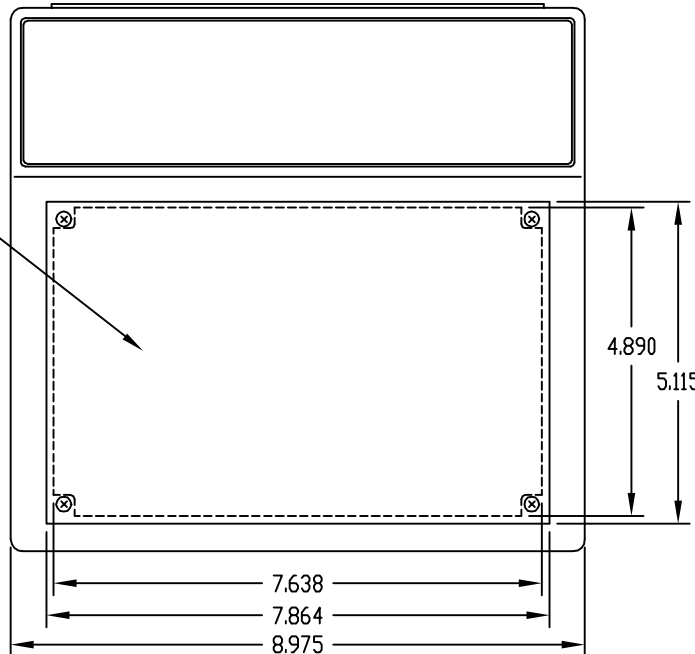
PLASTICASE

PART
No.

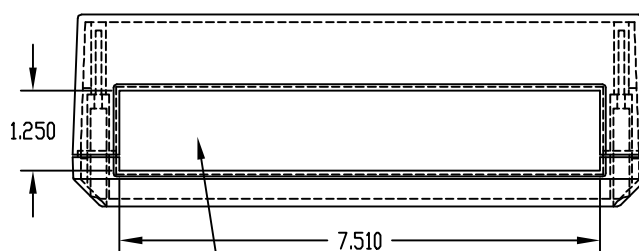
PC-11493

MATERIAL: BODY TOP & BOTTOM, REAR PANEL _____ ABS THERMOPLASTIC
(UL94-HB RATED)
SLOPE PANEL _____ 0.100 THK. ALUMINUM
FINISH: BODY TOP & BOTTOM _____ LIGHT GRAY
REAR PANEL _____ DARK GRAY
SLOPE PANEL _____ NATURAL

REMOVABLE
ALUMINUM
PANEL
(PRESSURE
SENSITIVE
TAPE ON
ONE SIDE)



BODY BOTTOM
(WITH BODY TOP REMOVED)



REAR VIEW

REMOVABLE REAR PANEL
0.090 THICK (TEXTURED ON ONE SIDE)

FOUR (4) M3 x 0.630" LG. SCREWS
SUPPLIED FOR ASSEMBLING BODY
TOP TO BOTTOM

FOUR (4) M3 x 0.315" LG. CSK. SCREWS
SUPPLIED FOR ASSEMBLING SLOPE
PANEL TO BODY TOP

FOUR (4) RUBBER STICK-ON FEET SUPPLIED

MOUNTING BOSSES USE EITHER M2.5 METRIC
OR #4 STD. SHEET METAL SCREWS x 0.188"
LG. (NOT SUPPLIED)

NOTE: ALL DIMENSIONS HAVE ±0.015
TOLERANCE UNLESS OTHERWISE SPECIFIED

* THESE INSIDE DIMENSIONS ARE TAKEN
FROM CLOSED END OF THE BOX