



Chipsmall Limited consists of a professional team with an average of over 10 year of expertise in the distribution of electronic components. Based in Hongkong, we have already established firm and mutual-benefit business relationships with customers from,Europe,America and south Asia,supplying obsolete and hard-to-find components to meet their specific needs.

With the principle of “Quality Parts,Customers Priority,Honest Operation,and Considerate Service”,our business mainly focus on the distribution of electronic components. Line cards we deal with include Microchip,ALPS,ROHM,Xilinx,Pulse,ON,Everlight and Freescale. Main products comprise IC,Modules,Potentiometer,IC Socket,Relay,Connector.Our parts cover such applications as commercial,industrial, and automotives areas.

We are looking forward to setting up business relationship with you and hope to provide you with the best service and solution. Let us make a better world for our industry!



Contact us

Tel: +86-755-8981 8866 Fax: +86-755-8427 6832

Email & Skype: info@chipsmall.com Web: www.chipsmall.com

Address: A1208, Overseas Decoration Building, #122 Zhenhua RD., Futian, Shenzhen, China

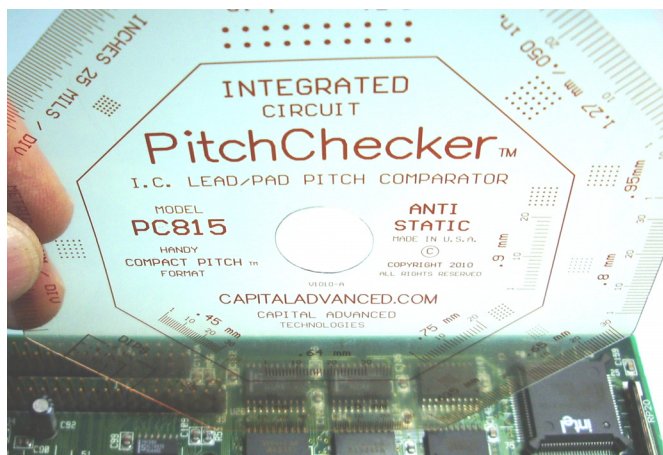


PitchChecker™ MODEL PC815

ANTI-STATIC SEE THROUGH PITCH COMPARATOR

BULLETIN
PC815B-R1

CHECK PITCH AND BODY SIZE OF INTEGRATED CIRCUITS
FEATURES PITCHES FOR MANY POPULAR TYPES INCLUDING
SOIC, SOP, SSOP, TSSOP, BGA, QFP, QFN, DFN, DIP, CSP and MORE



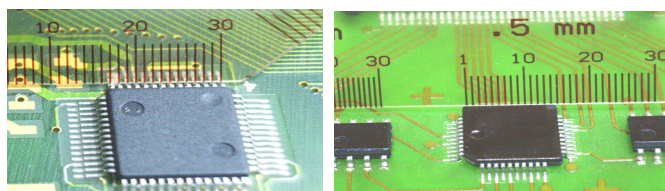
FLEXIBLE AND COMPACT

Produced using high precision photo-molecular imaging on dimensionally stabilized polymer, the PitchChecker™ provides a fast accurate method to check Pitch of a wide range of SURFACE MOUNT I.C. types. Using visual comparison with multiple reference points aligned on edge or with overlay or underlay of devices or printed circuit boards, the shape and flexibility permit use with individual IC's, bare boards, or assembled boards. Rulings can be used with leads on edges or with area array style packages. Corresponding dot patterns can be used with a variety of CSP and BGA type I.C.'s. In addition, package body sizes can be measured.

ANTI-STATIC SAFE FOR I.C.s and ASSEMBLIES

Pitchchecker features a permanent ANTI-STATIC* coating safe for working with static sensitive devices when used with personnel grounding and/or static safe surfaces and handling techniques. Unlike metallic or conductive measuring tools the dissipative coating helps protect devices and boards from ESD events when used with proper techniques.

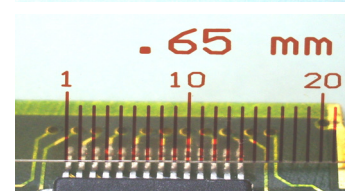
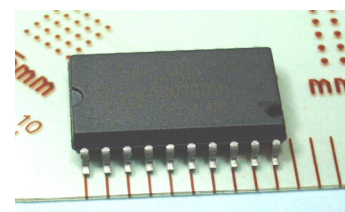
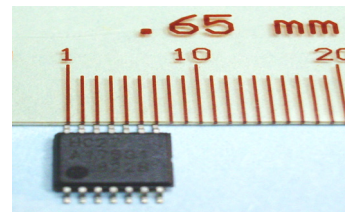
* Anti-Static dissipative test range 10⁶ – 10⁹ ohms P/S per ANSI/ESDA S11.11 & DIN EN 100 015/1



STOP GUESSING Double check the pitch of I.C.'s and boards when you really need to be sure

CAUTION: Excessive abrasion, creasing, or rough handling may damage anti-static coating. Do not expose to water, solvents, or other liquids. Clean by blotting with soft cloth dampened with Approved cleaner avoiding excessive rubbing or abrasion. See web site for additional information

PITCHES
RULES AND DOT PATTERN
OUTER EDGE
.35 MM
.4 MM
.5 MM
.635 MM
.65 MM
.8 MM
.95 MM
1.27 MM
2.54 MM
INNER RING
.45 MM
.64 MM
.75 MM
.9 MM
RULERS
INCHES 25 Mil/Div
METRIC 1 MM/Div.



See the **PITCHER WINDOW™** products from **CAPITAL** for enhanced ways to use this tool.

Copyright 2010 by Capital Advanced Technologies, Inc. All Rights Reserved. Pitch Checker, Stop Guessing, Compact Pitch and PITCHER WINDOW are Trademarks of Capital Advanced Technologies, Inc. All other Trademarks are the property of their respective owners. Availability, specifications, and prices are subject to change without notice. All information given is believed to be accurate but is not guaranteed. The user of information given or products represented by such information is responsible for determining the suitability of said information or products for a given purpose. No permission is granted or implied regarding the use of intellectual property or patents owned by Capital Advanced Technologies, Inc. or others by the provision of information or products herein.

MADE
IN
U.S.A.

CAPITAL ADVANCED TECHNOLOGIES, INC.

WWW.CapitalAdvanced.com

© COPYRIGHT 2010