



Chipsmall Limited consists of a professional team with an average of over 10 year of expertise in the distribution of electronic components. Based in Hongkong, we have already established firm and mutual-benefit business relationships with customers from,Europe,America and south Asia,supplying obsolete and hard-to-find components to meet their specific needs.

With the principle of "Quality Parts,Customers Priority,Honest Operation,and Considerate Service",our business mainly focus on the distribution of electronic components. Line cards we deal with include Microchip,ALPS,ROHM,Xilinx,Pulse,ON,Everlight and Freescale. Main products comprise IC,Modules,Potentiometer,IC Socket,Relay,Connector.Our parts cover such applications as commercial,industrial, and automotives areas.

We are looking forward to setting up business relationship with you and hope to provide you with the best service and solution. Let us make a better world for our industry!



Contact us

Tel: +86-755-8981 8866 Fax: +86-755-8427 6832

Email & Skype: info@chipsmall.com Web: www.chipsmall.com

Address: A1208, Overseas Decoration Building, #122 Zhenhua RD., Futian, Shenzhen, China



Extension Modules for Slot SBCs



PCA-AUDIO-00A1E

- 5.1 Channel AC'97 Audio Extension Module
- Line-in, Mic-in, Aux-in, Line-out, Speaker-out, CD-in and Buzzer-in from CPU card
- Dimensions: 44.05 x 94 mm



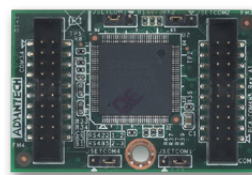
PCA-AUDIO-HDA1E

- 7.1 Channel HD Audio Extension Module
- Line-in, Mic-in, Lin-out, Front-out, Speaker-out, Rear-out, Subcen-out, Side-out
- Dimensions: 47.5 x 80.74 mm



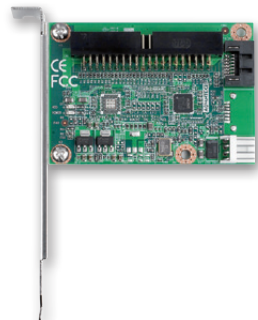
PCA-COM232-00A1E

- 4 RS-232 series ports extension module by LPC connector on CPU card.
- Dimensions: 31.5 x 48 mm



PCA-COM485-00A1E

- 4 RS-422/485 series ports extension module by LPC connector on CPU card.
- With Auto-flow control function
- Dimensions: 31.5 x 48 mm



PCA-SATAP1-00A1E

- 1 IDE to 1 SATA adapter board with bracket
- 1 EIDE (ATA100/66/33)
- 1 port SATA (300MB/s)
- Dimensions: 47.5 x 80.74 mm



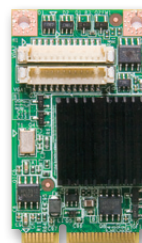
PCA-SATAP2-00A1E

- 1 IDE to 2 SATAs adapter board with bracket
- 1 EIDE (ATA100/66/33)
- 2 ports SATA (300MB/s)
- Dimensions: 47.5 x 80.74 mm



PCA-CFP1-00A1E

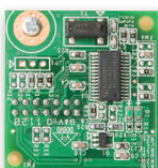
- IDE to CF adapter board with bracket
- 1 EIDE (ATA100/66/33)
- 1 CF socket
- Dimensions: 64.3 x 67.3 mm



PCA-5650-00A1E

- 2 VGA output Mini PCI Express Graphic card
- GPU: Silicon Motion SM750
- VGA output: 1920 x 1080, up to 75Hz vertical rate
- 16 Mb of embedded DDR memory

NEW



PCA-TPM-00A1E

- Trusted platform module compliant with TCG 1.2 specification and TCG software stack 1.2 via LPC connector on CPU card.
- Hardware based data protection solution for storage device encryption and decryption.
- Dimension: 31.5 x 30.5 mm

Preliminary



IPMI-1000-00A1E

- IPMI2.0 Server-grade remote control solution
- OS independent hardware-based solution
- Real-time and centralized management
- KVM over IP remote control function
- User friendly UI and utility
- Support Model: PCE-5126WG2, PCE-7127