



Chipsmall Limited consists of a professional team with an average of over 10 year of expertise in the distribution of electronic components. Based in Hongkong, we have already established firm and mutual-benefit business relationships with customers from,Europe,America and south Asia,supplying obsolete and hard-to-find components to meet their specific needs.

With the principle of “Quality Parts,Customers Priority,Honest Operation,and Considerate Service”,our business mainly focus on the distribution of electronic components. Line cards we deal with include Microchip,ALPS,ROHM,Xilinx,Pulse,ON,Everlight and Freescale. Main products comprise IC,Modules,Potentiometer,IC Socket,Relay,Connector.Our parts cover such applications as commercial,industrial, and automotives areas.

We are looking forward to setting up business relationship with you and hope to provide you with the best service and solution. Let us make a better world for our industry!



Contact us

Tel: +86-755-8981 8866 Fax: +86-755-8427 6832

Email & Skype: info@chipsmall.com Web: www.chipsmall.com

Address: A1208, Overseas Decoration Building, #122 Zhenhua RD., Futian, Shenzhen, China



LOC		DIST		REVISIONS			
P	LTR	DESCRIPTION	DATE	DMN	APVD		
01		REVISED PER ECO-10-022549	04NOV10	HMR	CR		

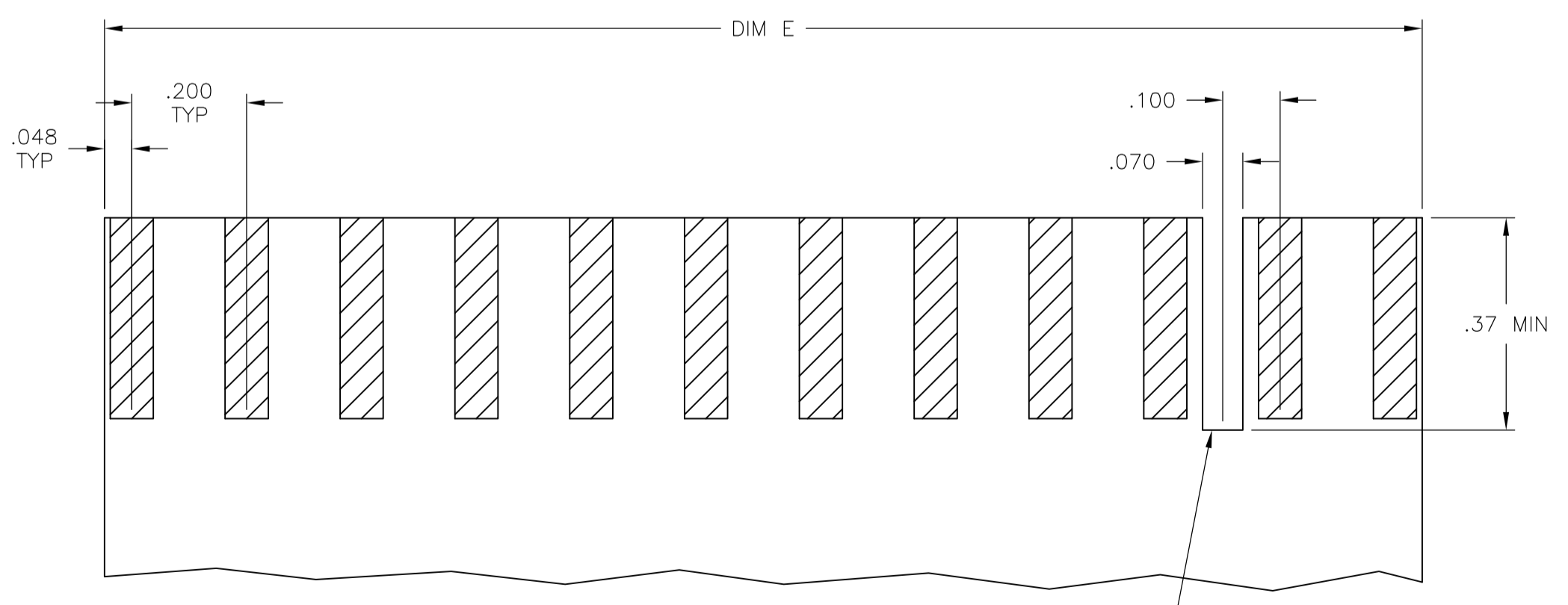
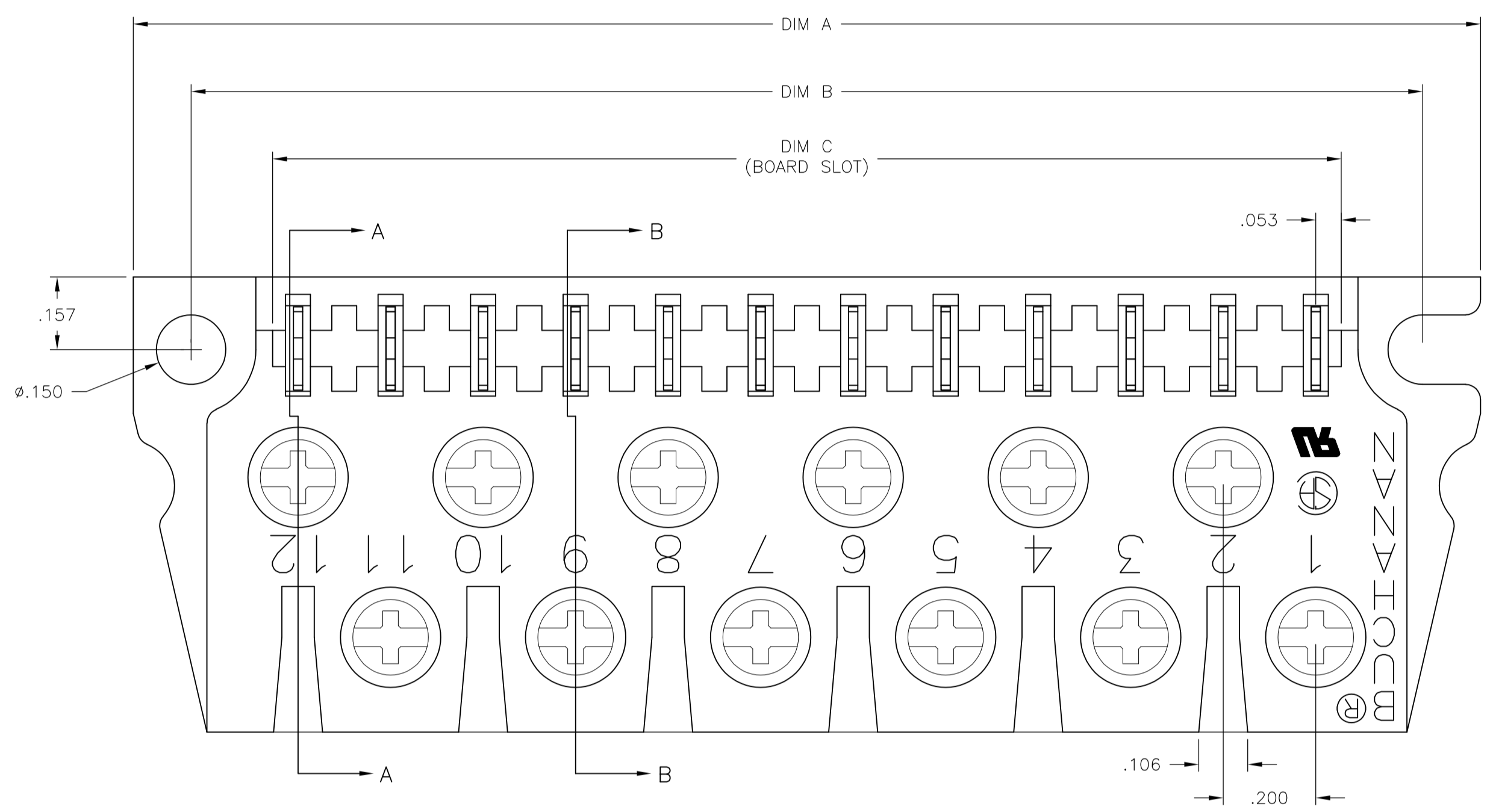
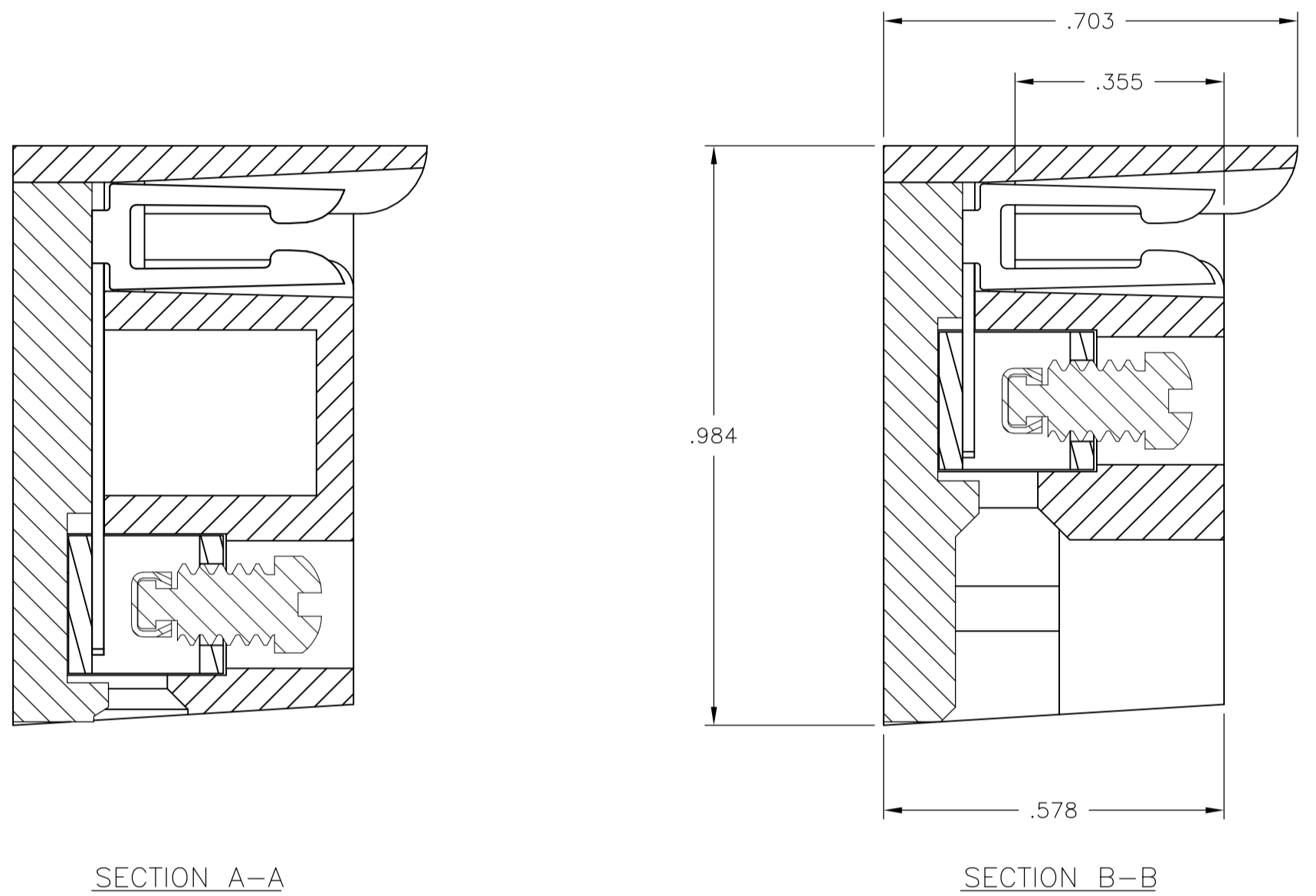
NOTES:

MATERIAL:
 HOUSING: POLYESTER, UL94V-0, WHITE.
 TUBULAR CONTACT: BRASS.
 PC CONTACT: PHOSPHOR BRONZE, GOLD OVER NICKEL PLATE.
 SCREW: 6-32, STEEL, ZINC CHROMATE FINISH.
 CLAMP: BRASS

MECHANICAL:
 PITCH: .200"
 WIRE STRIP LENGTH: .25"
 RECOMMENDED TIGHTENING TORQUE: 5-8 IN.-LBS.
 BOARD INSERTION FORCE: 5.6 OZ. PER CKT.
 BOARD SEPARATION FORCE: 1.8 OZ. PER CKT

ELECTRICAL:
 MAX CURRENT: 10A.
 OPERATING VOLTAGE: 250V.
 DIELECTRIC WITHSTAND: 2500V
 WIRE RANGE: #12 STRANDED ONLY.
 INSULATION RESISTANCE:
 CONTACT RESISTANCE:

ENVIRONMENTAL:
 OPERATING TEMP.: -65°C TO +140°C.



OPTIONAL POLARIZING NOTCH
 LOCATION PER CUSTOMER REQUIREMENT
 USE OPTIONAL POLARIZING KEY CAT. NO. PC17

RECOMMENDED PCB LAYOUT

7.095	7.110	7.470	7.720	36	PCB1A36A	1-1437410-6
5.895	5.910	6.270	6.520	30	PCB1A30A	1-1437410-4
4.695	4.710	5.070	5.320	24	PCB1A24A	1-1437410-2
3.495	3.510	3.870	4.120	18	PCB1A18A	1-1437410-0
2.295	2.310	2.670	2.920	12	PCB1A12A	1437410-8
DIM E	DIM C	DIM B	DIM A	NO. OF POS.	CATALOG NUMBER	PART NUMBER

THIS DRAWING IS A CONTROLLED DOCUMENT.

DIMENSIONS: INCHES	TOLERANCES UNLESS OTHERWISE SPECIFIED:	DIN S SCHLEGEL 16JUN04	Tyco Electronics Corporation Harrisburg, PA 17105-3608
		CHK S YODER 6/16/04	
	0 PLC ± -	APVD S YODER 6/16/04	NAME: PCB1A ASSEMBLY PRODUCT SPEC: SELECT GOLD PLATE
	1 PLC ± -	APPLICATION SPEC	
MATERIAL	FINISH	WEIGHT	RESTRICTED TO
		A1 00779	SCALE 4:1 SHEET 1 OF 1 REV 01

CUSTOMER DRAWING