



Chipsmall Limited consists of a professional team with an average of over 10 year of expertise in the distribution of electronic components. Based in Hongkong, we have already established firm and mutual-benefit business relationships with customers from,Europe,America and south Asia,supplying obsolete and hard-to-find components to meet their specific needs.

With the principle of "Quality Parts,Customers Priority,Honest Operation,and Considerate Service",our business mainly focus on the distribution of electronic components. Line cards we deal with include Microchip,ALPS,ROHM,Xilinx,Pulse,ON,Everlight and Freescale. Main products comprise IC,Modules,Potentiometer,IC Socket,Relay,Connector.Our parts cover such applications as commercial,industrial, and automotives areas.

We are looking forward to setting up business relationship with you and hope to provide you with the best service and solution. Let us make a better world for our industry!



Contact us

Tel: +86-755-8981 8866 Fax: +86-755-8427 6832

Email & Skype: info@chipsmall.com Web: www.chipsmall.com

Address: A1208, Overseas Decoration Building, #122 Zhenhua RD., Futian, Shenzhen, China



Products

- Products Overview
- Product Search**
- Evaluate
 - FAQ's
- How to Buy
 - Bill of Material
 - Favorite Products List
 - Locate Distributor

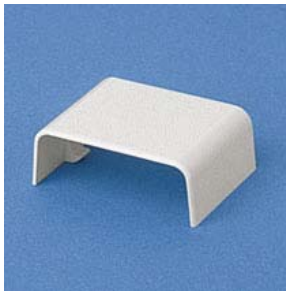
Home > Products Overview > Product Search >

Current refinements (click  to remove) [Search Tips](#)

Part Number > PCF6EI-X

Your search criteria matched only one product, shown below

PCF6EI-X



Fittings are available for the PD3 and the PD6 raceway to route cabling. In addition to the coupler, inside corner fitting, right angle fittings etc, there is also a Flexible Fitting which is used to route PD raceway around or over obstacles and the Entrance End fitting used to connect directly to conduit.

Part Number	PCF6EI-X
RoHS Compliancy Status	Compliant
Part Description	Coupler Fitting for PD profile raceway size 6.
Product Type	Power Rated Fittings
Color	Electric Ivory
CSA Certified	Yes
UL Listed	Yes
CE Compliant	No
Pricing Description	PD6 Power Rated Coupler Fitting
Product Size	6
Min. Order UOM	PC
Min. Order Qty.	10
BOM Qty. (# of Pkgs.)	<input type="text" value="0"/>
Add to Favorite Product List	<input type="checkbox"/>

Please [register](#) to utilize the 'Bill of Materials', 'Submit Quotes' and 'Favorite Product List' features.