



Chipsmall Limited consists of a professional team with an average of over 10 year of expertise in the distribution of electronic components. Based in Hongkong, we have already established firm and mutual-benefit business relationships with customers from,Europe,America and south Asia,supplying obsolete and hard-to-find components to meet their specific needs.

With the principle of “Quality Parts,Customers Priority,Honest Operation,and Considerate Service”,our business mainly focus on the distribution of electronic components. Line cards we deal with include Microchip,ALPS,ROHM,Xilinx,Pulse,ON,Everlight and Freescale. Main products comprise IC,Modules,Potentiometer,IC Socket,Relay,Connector.Our parts cover such applications as commercial,industrial, and automotives areas.

We are looking forward to setting up business relationship with you and hope to provide you with the best service and solution. Let us make a better world for our industry!



Contact us

Tel: +86-755-8981 8866 Fax: +86-755-8427 6832

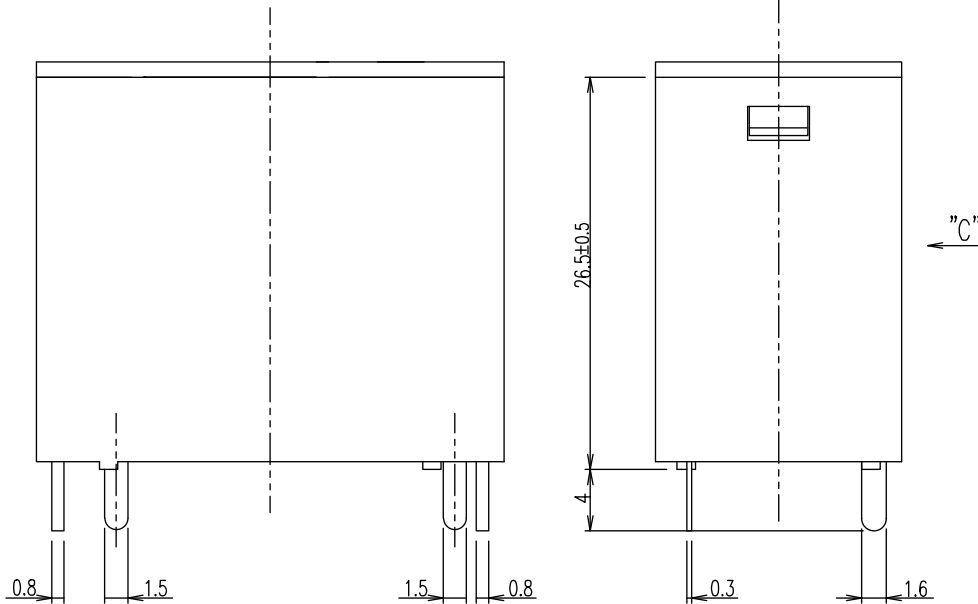
Email & Skype: info@chipsmall.com Web: www.chipsmall.com

Address: A1208, Overseas Decoration Building, #122 Zhenhua RD., Futian, Shenzhen, China

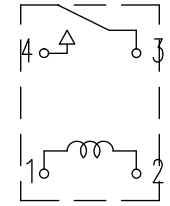


THIS DRAWING IS UNPUBLISHED. RELEASED FOR PUBLICATION
 © COPYRIGHT -- By -- ALL RIGHTS RESERVED.

LOC	DIST	REVISIONS			
P	LTR	DESCRIPTION	DATE	DWN	APVD
HB	—				
B1		REVISED PER ECO-11-005140	29-MAR-11	RK	HMR
B2		CHANGE TE LOGO; TERMINALS TOLERANCE CLARIFICATION; ADD LINE IDENTIFIER TO MARKING; PN OBSOLETE. ECO-12-008675	22-AUG-12	K.T	BH.Y



CONNECTION DIAGRAM



VIEW C

DRILLING DIAGRAM (BOTTOM VIEW)

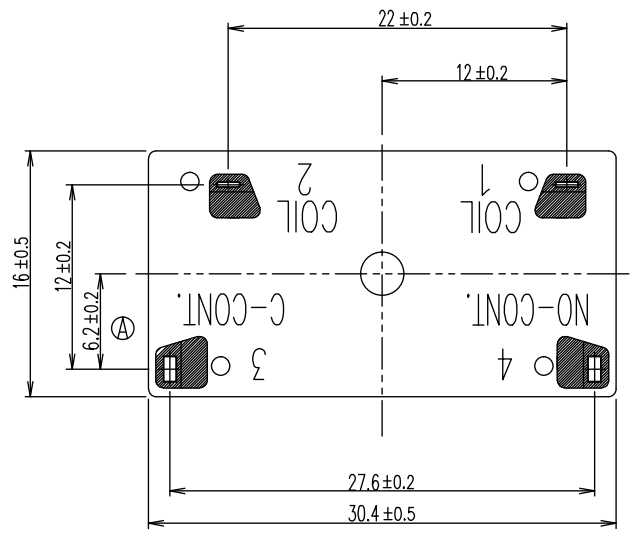
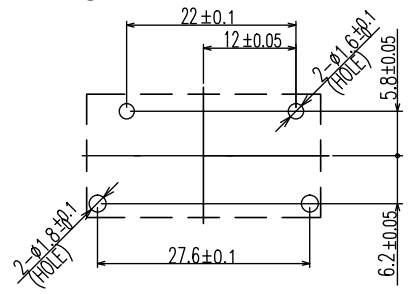
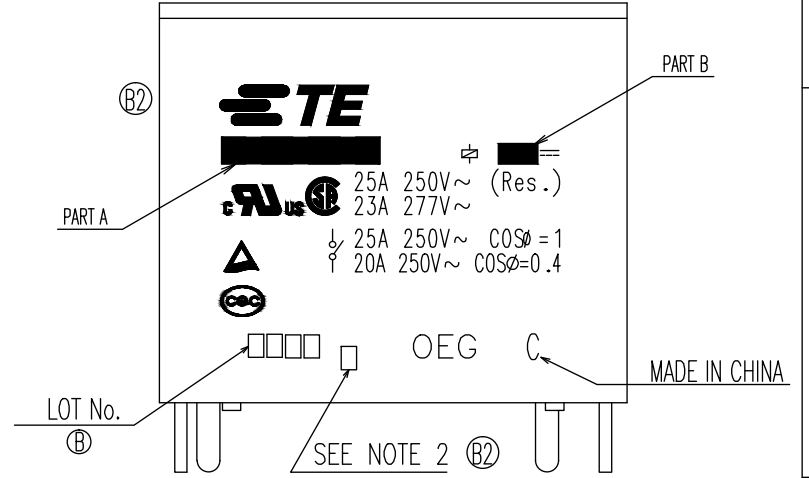


DIAGRAM DIMENSION	TOLERANCE
0.99mm MAX.	±0.1mm
1 - 2.99mm	±0.2mm
3mm MIN.	±0.3mm



THIS DRAWING IS A CONTROLLED DOCUMENT.		DWN	STE TE Connectivity	
		H.SASAKI		
		CHK		
		Y.OIKAWA		
		APVD		
		A.NAGAI		
		PRODUCT SPEC		
		APPLICATION SPEC		
		WEIGHT		
		CUSTOMER DRAWING		
DIMENSIONS: mm		TOLERANCES UNLESS OTHERWISE SPECIFIED:	NAME	
0 PLC ±-		1 PLC ±-	PCFN-D2M SPEC,000	
2 PLC ±-		2 PLC ±-	SIZE CAGE CODE DRAWING NO RESTRICTED TO	
3 PLC ±-		3 PLC ±-	A3 00779 C=1461193	
4 PLC ±-		4 PLC ±-	SCALE 3:1 SHEET 1 OF 2 REV B2	
ANGLES ±-				
MATERIAL FINISH				

4

3

2

1

THIS DRAWING IS UNPUBLISHED. RELEASED FOR PUBLICATION
 © COPYRIGHT - By - ALL RIGHTS RESERVED.

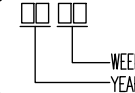
LOC	DIST	REVISIONS			
P	LTR	DESCRIPTION	DATE	DWN	APVD
		SEE SHEET 1	-	-	-

ACTIVE	3-1419153-5	PCFN-112D2M,000	12V	PCFN-112D2M	k
OBSOLETE	1-1440008-8	PCFN-105D2M,000	5V	PCFN-105D2M	j
ACTIVE	1461193-9	PCFN-124D2M,000	24V	PCFN-124D2M	i
ACTIVE	1461193-8	PCFN-118D2M,000	18V	PCFN-118D2M	h
ACTIVE	1461193-7	PCFN-109D2M,000	9V	PCFN-109D2M	g
ACTIVE	1461193-6	PCFN-106D2M,000	6V	PCFN-106D2M	f
ACTIVE	1461193-5	PCFN-148D2M,000	48V	PCFN-148D2M	e
OBSOLETE	1461193-4	PCFN-124D2M,000	24V	PCFN-124D2M	d
OBSOLETE	1461193-3	PCFN-118D2M,000	18V	PCFN-118D2M	c
OBSOLETE	1461193-2	PCFN-109D2M,000	9V	PCFN-109D2M	b
OBSOLETE	1461193-1	PCFN-106D2M,000	6V	PCFN-106D2M	a
PN STATUS	PART NO	DESCRIPTION	PART B	PART A	ITEM

RELAY TYPE

NOTE:

Ⓑ 1.LOT NO SYSTEM AS FOLLOWING:



Ⓑ 2.ONE CHARACTER DISTINGUISH THE LINE IDENTITY, SUCH AS: A, B...

Ⓑ 3.TERMINAL DIMENSION IS BEFORE SOLDER DIP.

Ⓑ 4.FOR THE TIN-PLATING OF THE PINS:
+0.1mm FOR WIDTH,THICKNESS AND DIAMETER.
+0.5mm FOR LENGTH.

		EPOXY RESIN	SEAL	17
		POLYURETHANE Cu WIRE	MAGNETIC WIRE	16
UL 94V-0		PPS	CARD	15
UL 94V-0		PBT	CASE	14
UL 94V-0		PBT	BASE	13
UL 94V-0		PBT	BOBBIN	12
	SOLDER DIP	Cu ALLOY	COIL TERMINAL R	11
	SOLDER DIP	Cu ALLOY	COIL TERMINAL L	10
		STAINLESS	HINGE SPRING	9
		Ag ALLOY	STATIONARY CONTACT	8
		Ag ALLOY	MOVABLE CONTACT	7
	SOLDER DIP	Cu ALLOY	MOVABLE SPRING	6
	SOLDER DIP	Cu ALLOY	STATIONARY TERMINAL	5
	SOLDER DIP	Cu ALLOY	MOVABLE TERMINAL	4
	Ni PLATED	STEEL	CORE	3
	Ni PLATED	STEEL	ARMATURE	2
	Ni PLATED	STEEL	YOKE	1
INCOMBUSTIBILITY	TREATMENT	MATERIAL	DESCRIPTION	ITEM

THIS DRAWING IS A CONTROLLED DOCUMENT.		DWN H.SASAKI			
DIMENSIONS: mm		CHK Y.OIKAWA			
		APVD A.NAGAI	NAME PCFN-D2M SPEC,000		
TOLERANCES UNLESS OTHERWISE SPECIFIED:		PRODUCT SPEC	SIZE		
0 PLC ±-		APPLICATION SPEC	CAGE CODE		
1 PLC ±-			DRAWING NO		
2 PLC ±-			RESTRICTED TO		
3 PLC ±-			A3 00779 C=1461193		
4 PLC ±-			SCALE 3:1 SHEET 2 OF 2 REV B2		
ANGLES ±-			CUSTOMER DRAWING		
MATERIAL		FINISH	WEIGHT		