



Chipsmall Limited consists of a professional team with an average of over 10 year of expertise in the distribution of electronic components. Based in Hongkong, we have already established firm and mutual-benefit business relationships with customers from,Europe,America and south Asia,supplying obsolete and hard-to-find components to meet their specific needs.

With the principle of “Quality Parts,Customers Priority,Honest Operation,and Considerate Service”,our business mainly focus on the distribution of electronic components. Line cards we deal with include Microchip,ALPS,ROHM,Xilinx,Pulse,ON,Everlight and Freescale. Main products comprise IC,Modules,Potentiometer,IC Socket,Relay,Connector.Our parts cover such applications as commercial,industrial, and automotives areas.

We are looking forward to setting up business relationship with you and hope to provide you with the best service and solution. Let us make a better world for our industry!



Contact us

Tel: +86-755-8981 8866 Fax: +86-755-8427 6832

Email & Skype: info@chipsmall.com Web: www.chipsmall.com

Address: A1208, Overseas Decoration Building, #122 Zhenhua RD., Futian, Shenzhen, China

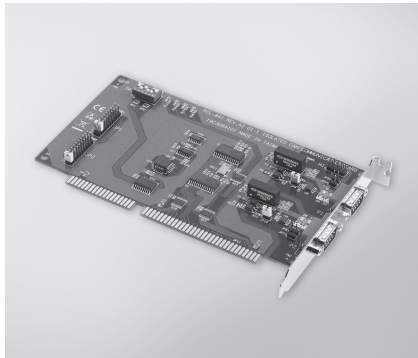


PCL-841 PCI-1680U PCM-3680/I

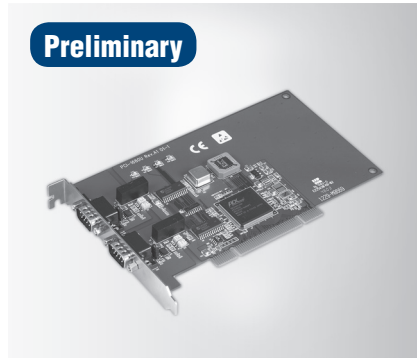
2-port CAN-bus ISA Card with Isolation Protection

2-port CAN-bus Universal PCI Card with Isolation Protection

2-port CAN-bus PC/104 / PCI-104 Module with Isolation Protection

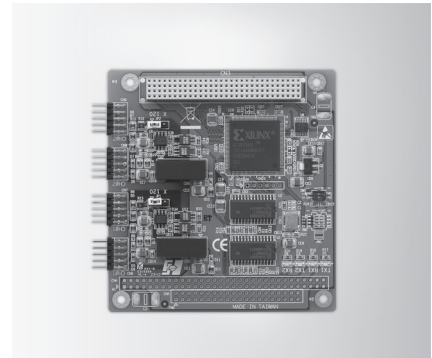


PCL-841



Preliminary

PCI-1680U



PCM-3680I



Features

- Operates two separate CAN networks simultaneously
- High speed transmission up to 500 kbps
- Optical isolation protection of 1000 V_{DC}
- Windows DLL library and examples included
- Wide IRQ selection for each port: IRQ 3, 4, 5, 6, 7, 9, 10, 11, 12, 15
- Supports 32-bit/64-bit Windows 2000/XP/Vista/7 and Linux

Specifications

General

- Card Interface** ISA
- Certification** CE, FCC
- Connectors** 2 x DB9-M
- Dimensions** 185 x 100 mm (7.3" x 3.9")
- Ports** 2
- Power Consumption** 5 V @ 400 mA typical

Communications

- CAN Controller** SJA-1000
- CAN Transceiver** 82C250
- Protocol** CAN2.0 A/B
- Speed** 500 kbps
- IRQ** 3, 4, 5, 6, 7, 9, 10, 11, 12, or 15
- Memory Segment Base Address** From C800H to EF00H
- Signal Support** CAN_H, CAN_L

Protection

- Isolation Protection** 1,000 V_{DC}

Environment

- Operating Temp.** 0 ~ 50°C (32 ~ 122°F)

Ordering Information

- PCL-841** 2-port CAN-bus ISA Comm. Card w/ Iso

Features

- Operates two separate CAN networks simultaneously
- High speed transmission up to 1 Mbps
- Optical isolation protection of 2500 V_{DC}
- Windows DLL library and examples included
- I/O address automatically assigned by PCI PnP
- Supports 32-bit/64-bit Windows 2000/XP/Vista/7 and Linux

Specifications

General

- Card Interface** Universal PCI
- Certification** CE, FCC
- Connectors** 2 x DB9-M
- Dimensions** 175 x 107 mm (6.9" x 4.2")
- Ports** 2
- Power Consumption** 5 V @ 400 mA typical

Communications

- CAN Controller** SJA-1000
- CAN Transceiver** TJA1051T
- Protocol** CAN2.0 A/B
- Speed** 1 Mbps
- CAN Frequency** 16 MHz
- Signal Support** CAN_H, CAN_L

Protection

- Isolation Protection** 2,500 V_{DC}

Environment

- Operating Temp.** 0 ~ 70°C (32 ~ 158°F)

Ordering Information

- PCI-1680U** 2-port CAN Uni-PCI COMM Card w/Iso

Features

- Operates two separate CAN networks simultaneously
- High speed transmission up to 1 Mbps
- 16 MHz CAN controller frequency
- Optical isolation protection
- Transmit/receive status LED indicators on each port
- Supports wide operating temperature
- Supports 32/64-bit WinXP/Vista/7 and Linux
- Supports WinCE 5.0/6.0

Specifications

General

- Card Interface** PCM-3680: PC/104
PCM-3680I: PCI-104
- Certification** CE, FCC
- Connectors** 2 x DB9-M with cable
- Dimensions** 90 x 96 mm (3.6" x 3.8")
- Ports** 2
- Power Consumption** 5 V @ 400 mA

Communications

- CAN Controller** SJA-1000
- CAN Transceiver** 82C250
- Protocol** CAN2.0 A/B
- Speed** Up to 1 Mbps programmable transfer rate

CAN Frequency

- Signal Support** CAN_H, CAN_L

Protection

- Isolation Protection** 2,500 V_{DC}

Environment

- Operating Temperature** -25 ~ 85 °C
- Storage Temperature** -40 ~ 85 °C

Ordering Information

- PCM-3680** Dual-port Iso CAN-bus PC/104 Module
- PCM-3680I** Dual-port Iso CAN-bus PCI-104 Module