



Chipsmall Limited consists of a professional team with an average of over 10 year of expertise in the distribution of electronic components. Based in Hongkong, we have already established firm and mutual-benefit business relationships with customers from,Europe,America and south Asia,supplying obsolete and hard-to-find components to meet their specific needs.

With the principle of “Quality Parts,Customers Priority,Honest Operation,and Considerate Service”,our business mainly focus on the distribution of electronic components. Line cards we deal with include Microchip,ALPS,ROHM,Xilinx,Pulse,ON,Everlight and Freescale. Main products comprise IC,Modules,Potentiometer,IC Socket,Relay,Connector.Our parts cover such applications as commercial,industrial, and automotives areas.

We are looking forward to setting up business relationship with you and hope to provide you with the best service and solution. Let us make a better world for our industry!



Contact us

Tel: +86-755-8981 8866 Fax: +86-755-8427 6832

Email & Skype: info@chipsmall.com Web: www.chipsmall.com

Address: A1208, Overseas Decoration Building, #122 Zhenhua RD., Futian, Shenzhen, China



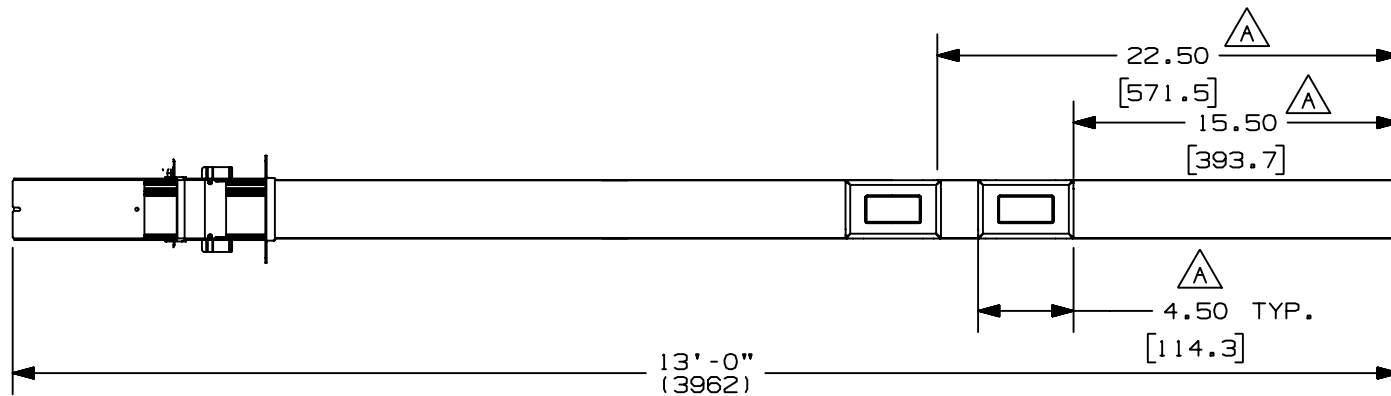
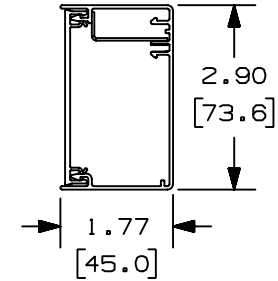
THIS COPY IS PROVIDED ON A RESTRICTED BASIS AND IS NOT TO BE USED IN ANY WAY DETRIMENTAL TO THE INTERESTS OF PANDUIT CORP.

NOTES:

1. SEE CURRENT CATALOG FOR ADDITIONAL PART SUFFIXES TO INDICATE COLOR AND OR PACKAGE QUANTITY.
2. FOLLOWING PARTS INCLUDED IN ACCESSORY KIT:
 ONE (1) BEND RADIUS CONTROL RAMP,
 TWO (2) #10-32 x 1/2 MACHINE SCREWS,
 ONE (1) END CAP,
 ONE (1) VELCRO PAD,
 ONE (1) BRACKET "T" BAR,
 ONE (1) THUMB SCREW,
 TWO (2) CEILING TRIM PLATES.
3. DIMENSIONS IN PARENTHESIS ARE IN METRIC.
4. ALL DIMENSIONS ARE REFERENCE DIMENSIONS.

PANDUIT P/N	WEIGHT
PCPA13R20	18.6 LB/EACH (8454 g/EACH)

CROSS-SECTION OF POLE



CAD FILENAME/LAYERS D37043B1_DC_PCPA13R20_00B.prt

PANDUIT CORP. TINLEY PARK, ILLINOIS
 PAN-WAY PAN-POLE (13 FT)
 (PCPA13R20)
 CUSTOMER DRAWING

UNLESS OTHERWISE SPECIFIED,
 DIMENSIONAL TOLERANCES ARE:
 (.X) ± (.XXX) ±
 (.XX) ±.03(.8) ANGLES ±

UNLESS OTHERWISE SPECIFIED,
 ALL DIMENSIONS ARE GIVEN
 IN INCHES, THIRD ANGLE PROJECTION.

REV	DATE	BY	CHK	DESCRIPTION	ECN	CHK	CUST	SUP
I	06-16-03	JBN	RMH	A. ADDED DIMENSIONS	37043-09	RGRO	RGRO	
R	12-18-00	MSO	CVV	RELEASED TO PRODUCTION	37043-09	HIW	HIW	

DRAWN BY MSO
 DATE 12-18-00
 CHECKED BY CVV

MAT'L: ALUMINUM

SCALE NONE
 DRAWING NO. 37043-09

DWG SIZE A