



Chipsmall Limited consists of a professional team with an average of over 10 year of expertise in the distribution of electronic components. Based in Hongkong, we have already established firm and mutual-benefit business relationships with customers from,Europe,America and south Asia,supplying obsolete and hard-to-find components to meet their specific needs.

With the principle of “Quality Parts,Customers Priority,Honest Operation,and Considerate Service”,our business mainly focus on the distribution of electronic components. Line cards we deal with include Microchip,ALPS,ROHM,Xilinx,Pulse,ON,Everlight and Freescale. Main products comprise IC,Modules,Potentiometer,IC Socket,Relay,Connector.Our parts cover such applications as commercial,industrial, and automotives areas.

We are looking forward to setting up business relationship with you and hope to provide you with the best service and solution. Let us make a better world for our industry!



Contact us

Tel: +86-755-8981 8866 Fax: +86-755-8427 6832

Email & Skype: info@chipsmall.com Web: www.chipsmall.com

Address: A1208, Overseas Decoration Building, #122 Zhenhua RD., Futian, Shenzhen, China

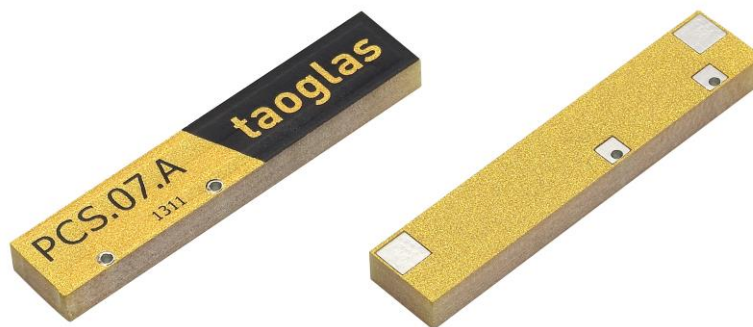


SPECIFICATION

Part No. : **PCS.07.A**

Product Name : Low Profile Cellular SMD Dielectric Antenna
GSM / CDMA / DCS / PCS / WCDMA /
UMTS /HSDPA / GPRS / EDGE
824~960MHz/1710~2170MHz

Features : High Efficiency Multi-Band SMD antenna
Low profile 35mm * 7mm * 3mm
RoHS Compliant



1. Introduction

The PCS.07.A is a low profile SMT cellular antenna designed for direct SMT mount on the device PCB. It provides highest efficiency in very small factor 35*7*3mm. It is more resistant to detuning compared to other antenna integrations. If tuning is required it can be tuned for the device environment, while there is no need for new tooling. Its rectangular shape and very small size makes it very easy to integrate – can be mounted directly on the edge of the PCB board.

The PCS.07 antenna is suitable for lower cost cellular applications and is especially suitable for telematics and automotive sector. If higher efficiency or improved radiated spurious emissions are required, especially on smaller ground-planes, please use our PA series antennas, PA.25 or PA.710.

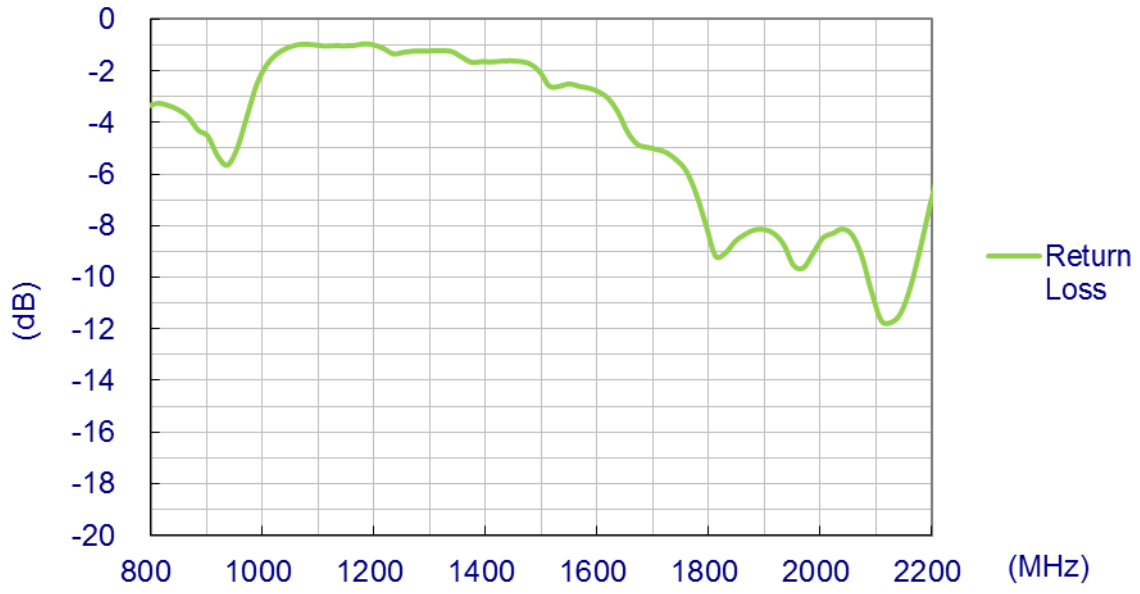
2. Specification Table

GSM Band					
	GSM 850	GSM 900	DCS	PCS	WCDMA I
Frequency (MHz)	824~896	880~960	1710~1880	1850~1990	1920~2170
Peak Gain (dBi)*	-1.96	-1.77	2.90	2.83	2.57
Average Gain (dBi)*	-4.68	-4.44	-2.50	-2.68	-2.42
Efficiency (%)*	32.02	31.06	45.14	52.82	50.11
Return Loss (dB)*	< -3	< -4	< -5	< -7	< -6
Polarization	Linear				
Impedance	50 Ω				
MECHANICAL					
Antenna Dimensions	35mm x 7mm x 3mm				
Material	Polymer				
Soldering Type	SMT through Reflow				
ENVIRONMENTAL					
Operation Temperature	-40°C ~ +85°C				
Storage Temperature	-40°C ~ +85°C				

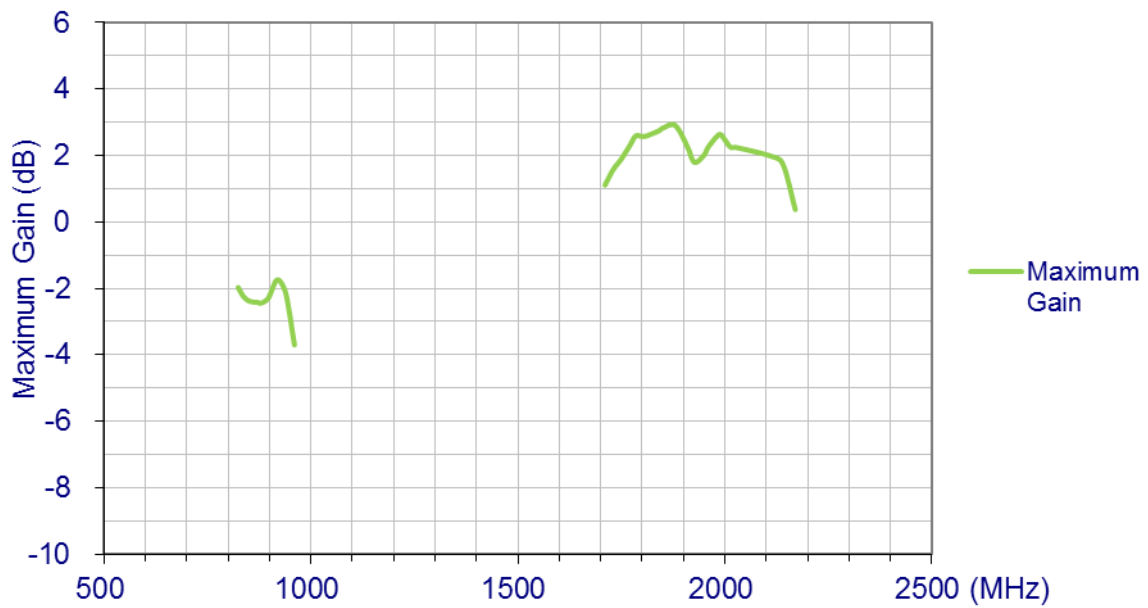
* all measurements taken on 100mm length ground plane EVB board.

3. Antenna Characteristics

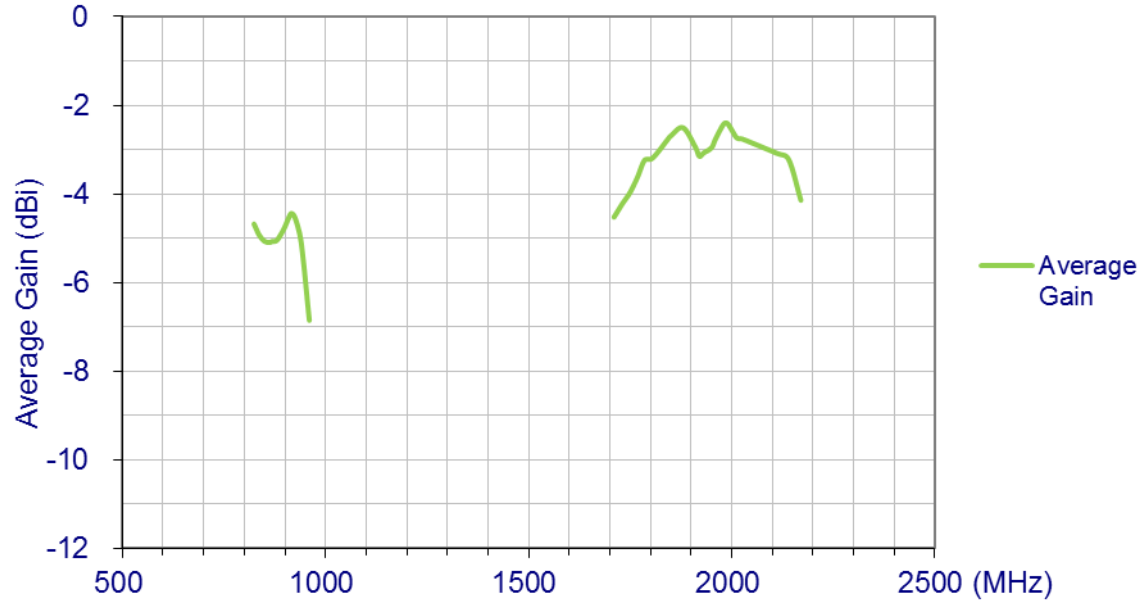
3.1. Return Loss



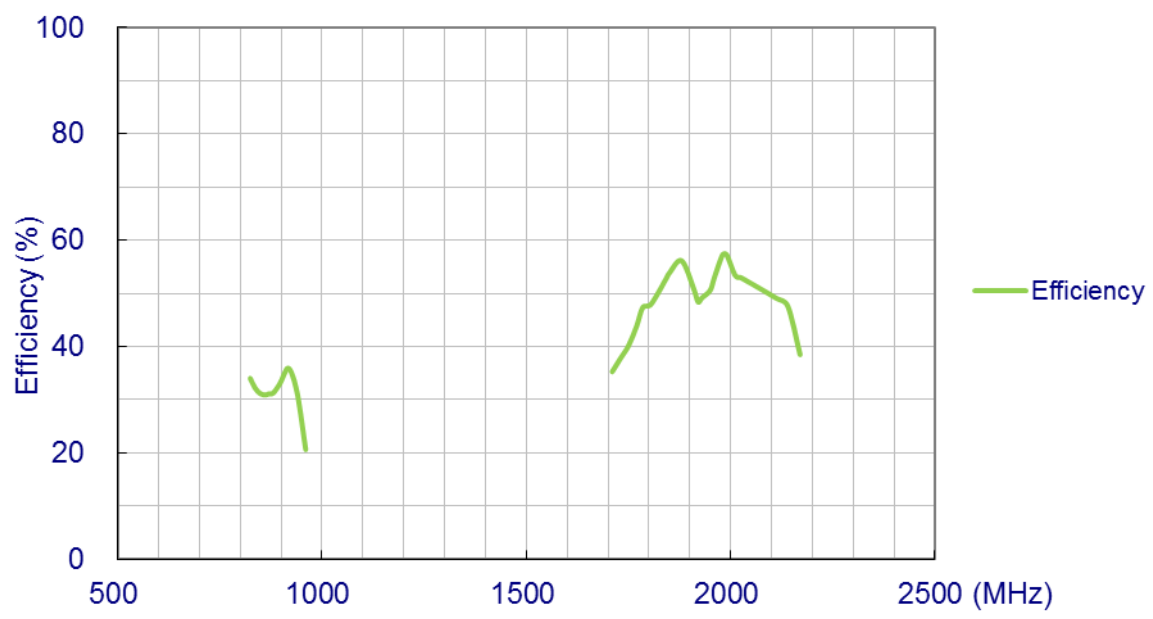
3.2. Maximum Gain



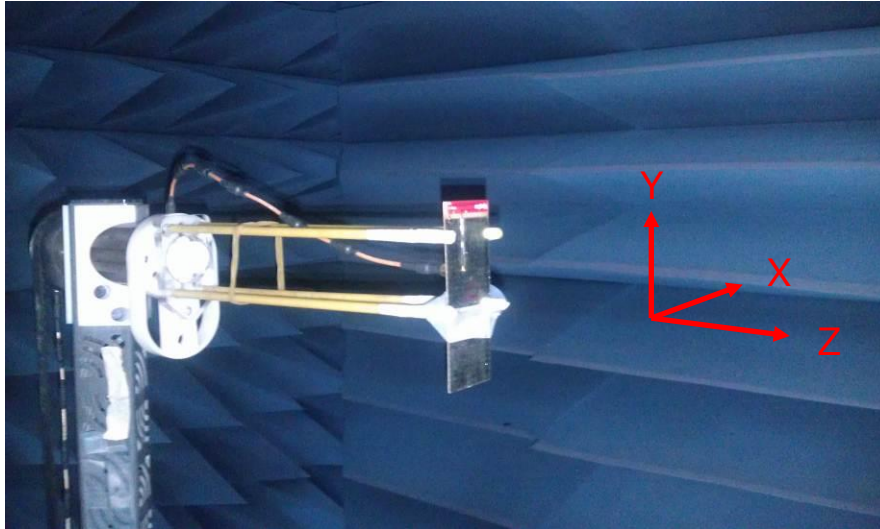
3.3. Average Gain



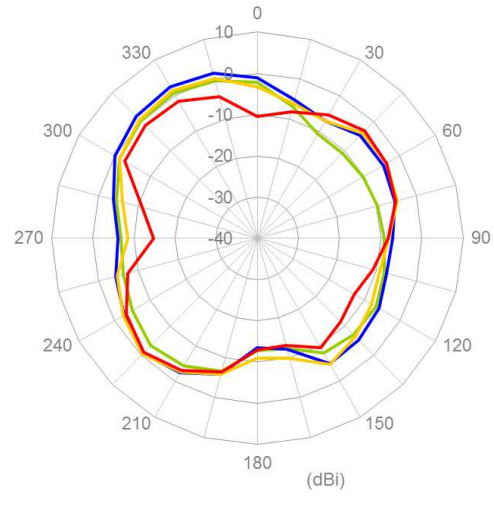
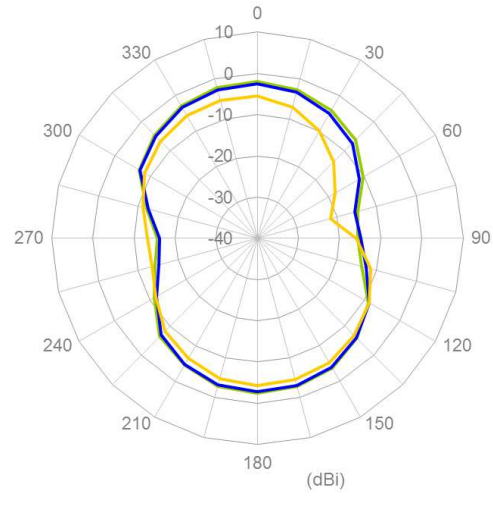
3.4. Efficiency



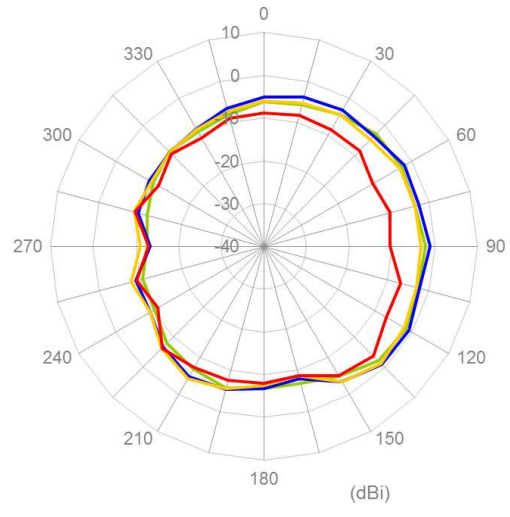
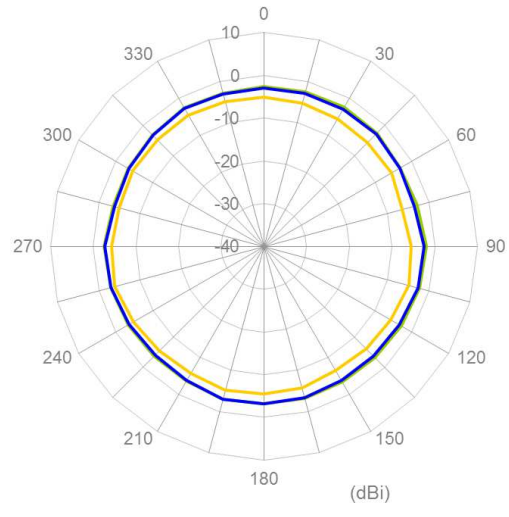
4. Radiation Patterns



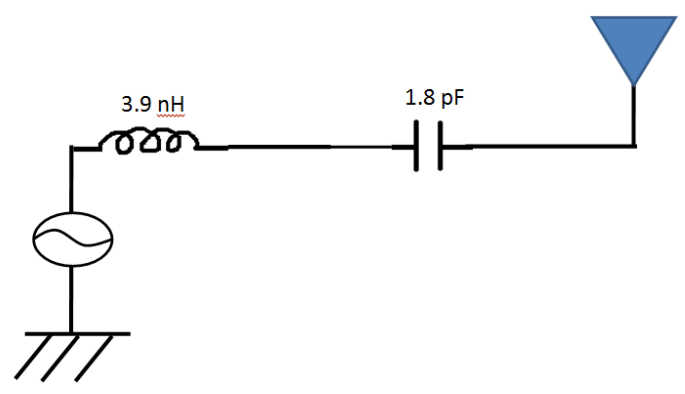
XY Plane



XZ plane



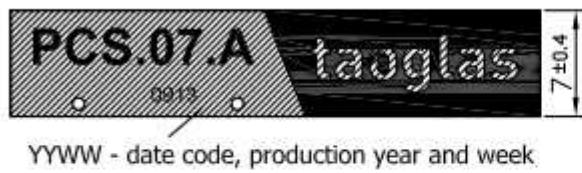
5. Matching Circuits



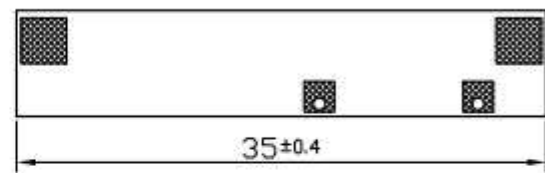
6. Drawing

6.1. PCS.07.A Antenna

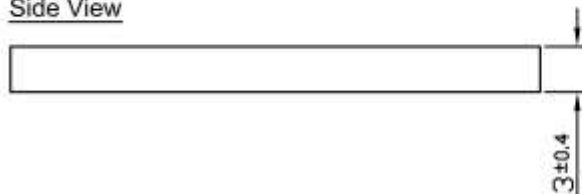
Top View



Bottom View



Side View

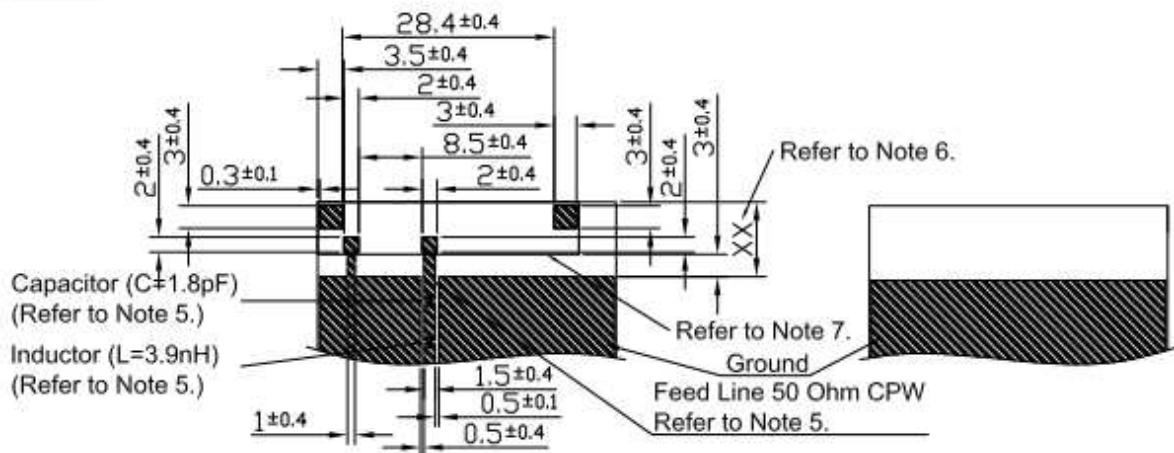


6.2. PCS.07.A Footprint





Footprint
0.8t PCB

Top View

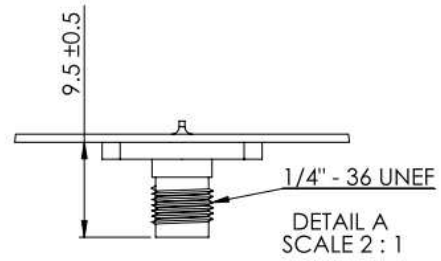
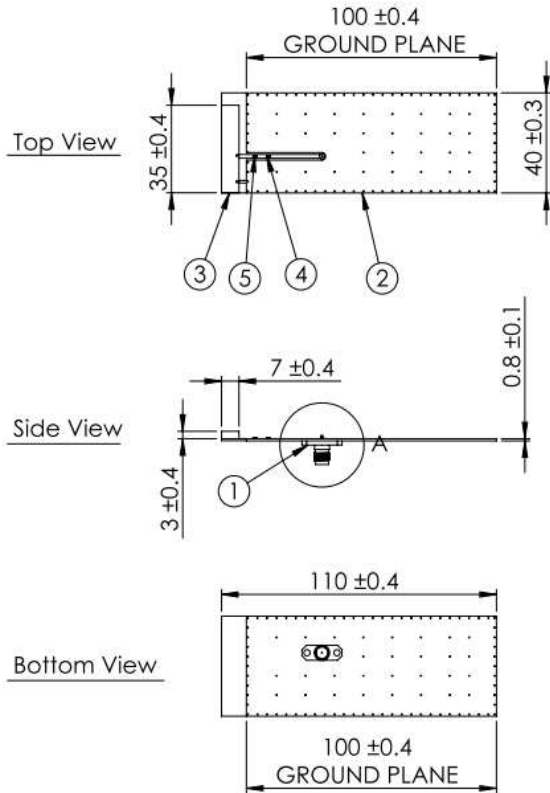
Bottom View



Notes

- | | | |
|-----------------------|---|---|
| 1. Tin Plated |  | 5. Matching circuit - value changes according to ground and layout. |
| 2. Silkscreen (Black) |  | 6. Antenna outline for placement reference. |
| 3. Soldermask (Gold) |  | 7. Keep out area. |
| 4. Copper |  | |

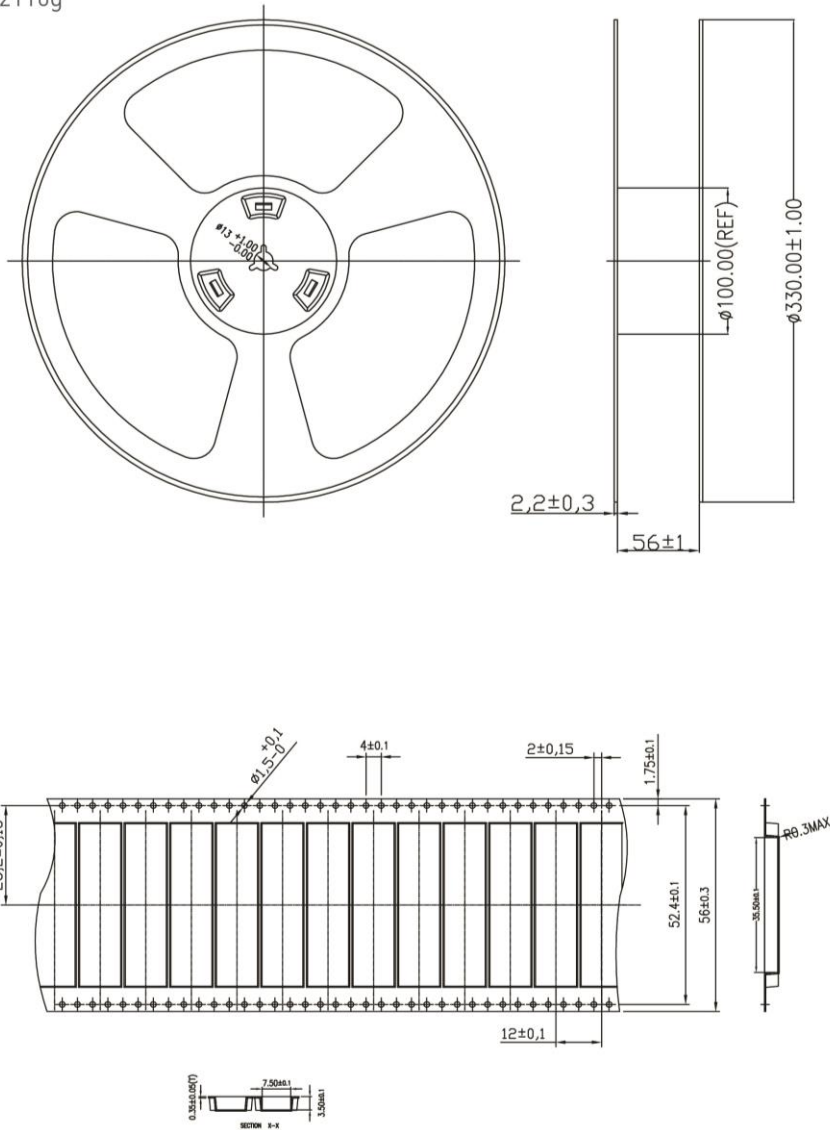
6.3. PCS.07.A Evaluation Board



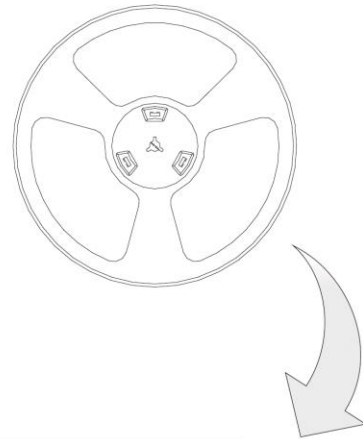
#	Name	Material	Finish	Qty
1	PCB SMA(F) ST	Brass	Gold	1
2	PCSD.07.A PCB	FR4 0.8t	Gold	1
3	PCS.07.A	FR4 3.0t	Gold	1
4	Inductor (L=3.9nH)	Ceramic	N/A	1
5	Capacitor (C=1.8pF)	Ceramic	N/A	1

7. Packaging

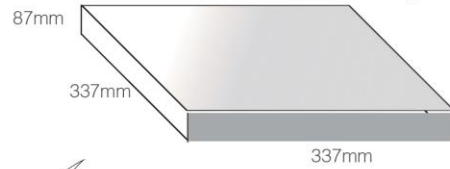
1000 pc PCS.07.A per reel
 Dimensions - Ø330*60mm
 Weight - 2110g



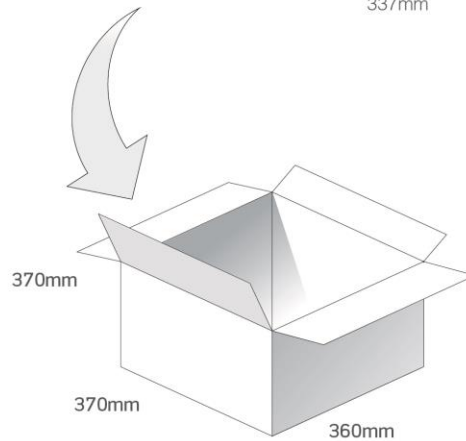
1000 pcs PCS.07.A reel
 Dimensions - 330*330*60mm
 Weight -2110g



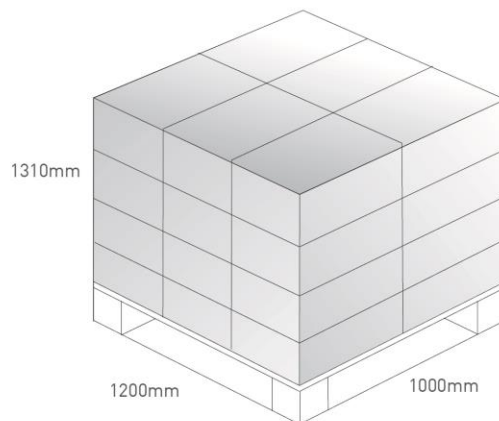
1000 pcs PCS.07.A / 1 Reel in small box
 Dimensions - 337*337*87mm
 Weight -2.39Kg



4 reels, 4000 pcs in one carton
 Carton Dimensions - 370*360*370mm
 Weight -10.44Kg

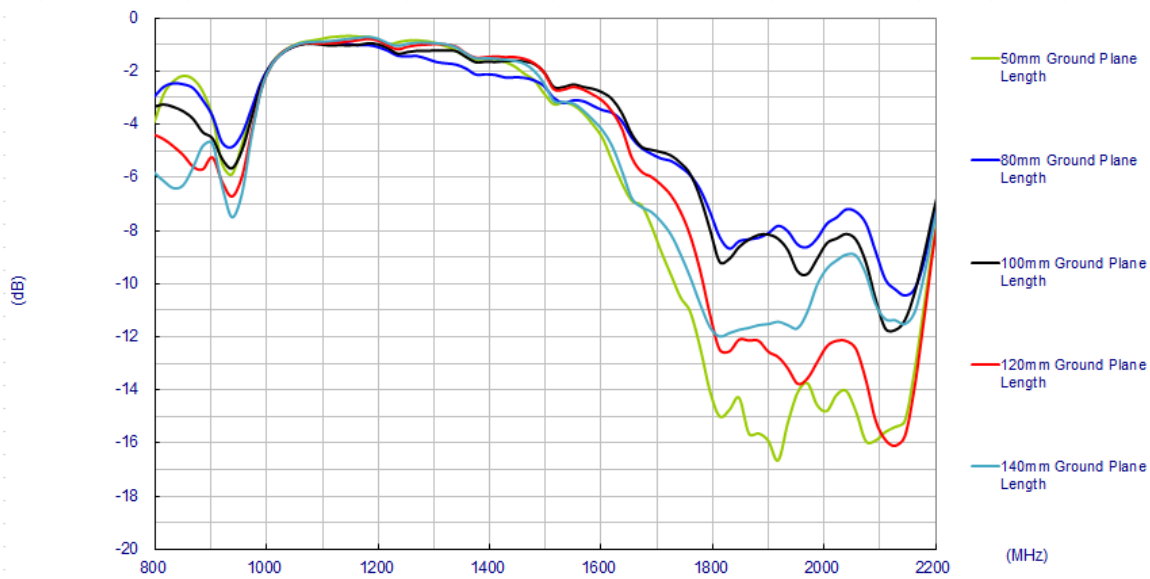


Pallet Dimensions 1200*1000*1310mm
 18 Cartons per Pallet
 6 Cartons per layer
 4 Layers

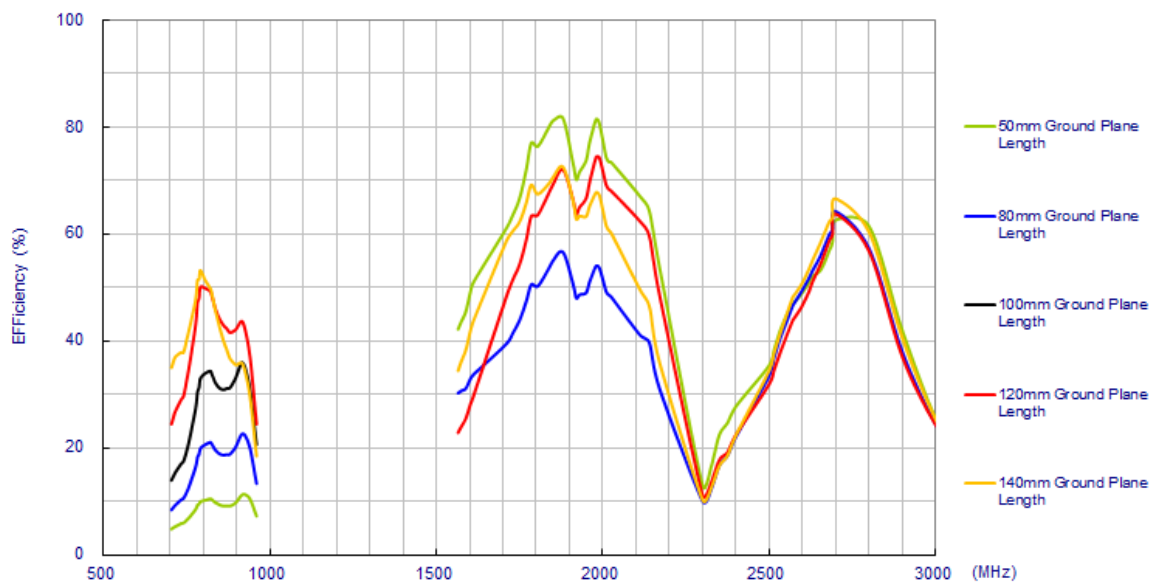


8. Application Note

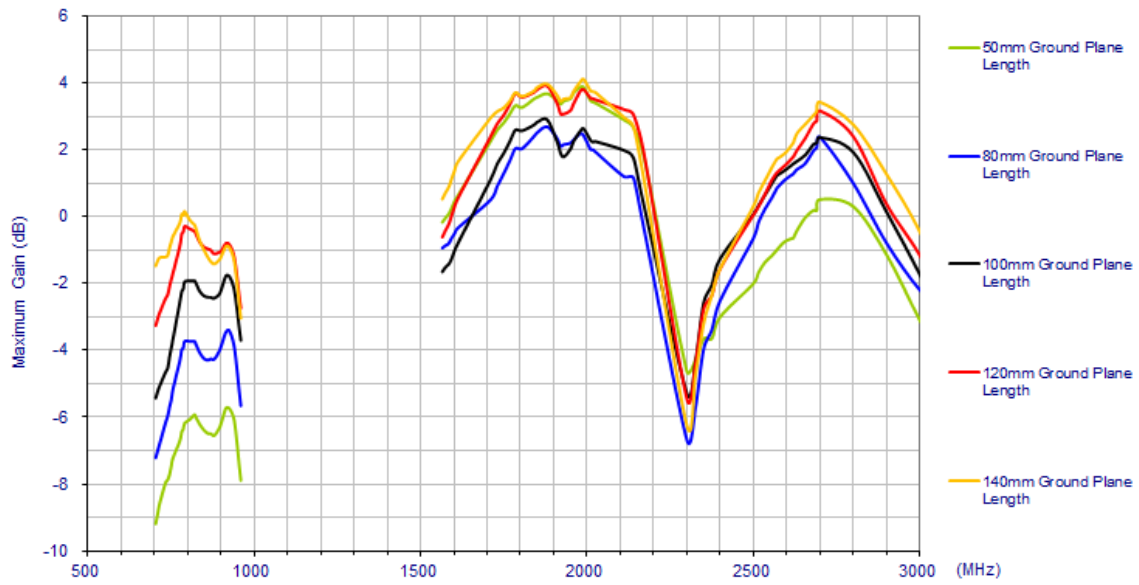
Investigations of PCS.07.A antenna performance on different lengths of ground plane were conducted, the return loss is shown as below.



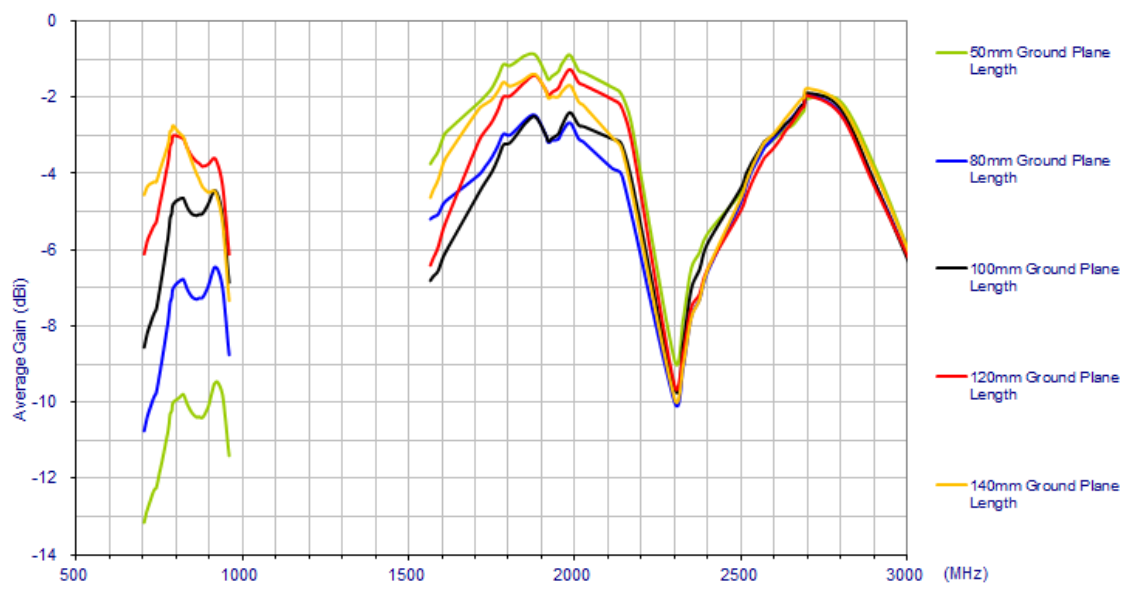
The antenna performance are shown on below,



Efficiency



Maximum Gain



Average Gain

Taoglas makes no warranties based on the accuracy or completeness of the contents of this document and reserves the right to make changes to specifications and product descriptions at any time without notice. Taoglas reserves all rights to this document and the information contained herein.

Reproduction, use or disclosure to third parties without express permission is strictly prohibited.

Copyright © Taoglas Ltd.