



Chipsmall Limited consists of a professional team with an average of over 10 year of expertise in the distribution of electronic components. Based in Hongkong, we have already established firm and mutual-benefit business relationships with customers from,Europe,America and south Asia,supplying obsolete and hard-to-find components to meet their specific needs.

With the principle of "Quality Parts,Customers Priority,Honest Operation,and Considerate Service",our business mainly focus on the distribution of electronic components. Line cards we deal with include Microchip,ALPS,ROHM,Xilinx,Pulse,ON,Everlight and Freescale. Main products comprise IC,Modules,Potentiometer,IC Socket,Relay,Connector.Our parts cover such applications as commercial,industrial, and automotives areas.

We are looking forward to setting up business relationship with you and hope to provide you with the best service and solution. Let us make a better world for our industry!



Contact us

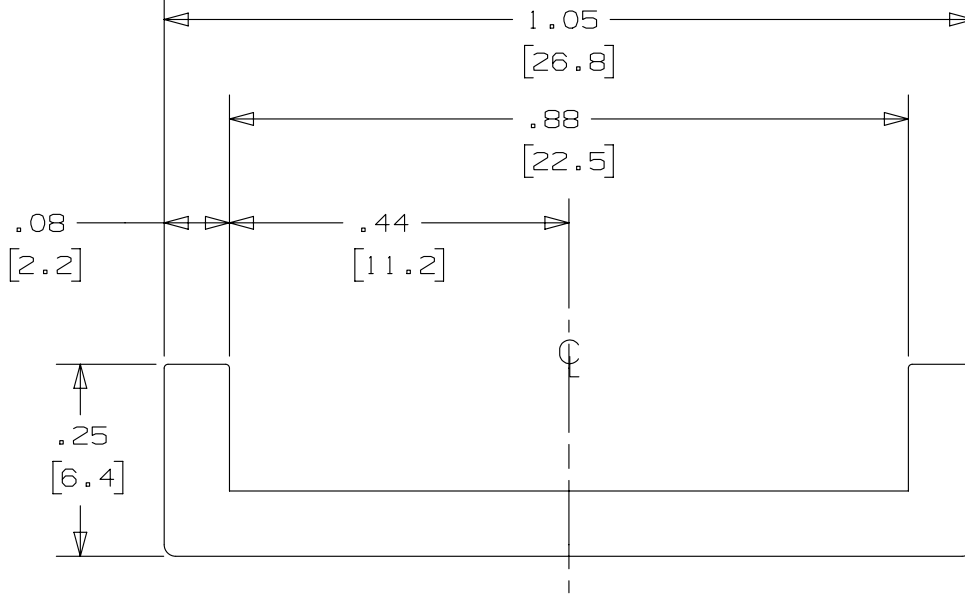
Tel: +86-755-8981 8866 Fax: +86-755-8427 6832

Email & Skype: info@chipsmall.com Web: www.chipsmall.com

Address: A1208, Overseas Decoration Building, #122 Zhenhua RD., Futian, Shenzhen, China



THIS COPY IS PROVIDED ON A RESTRICTED BASIS AND IS NOT TO BE USED IN ANY WAY DETRIMENTAL TO THE INTERESTS OF PANDUIT CORP.



NOTES:

1. MATERIAL: TPE LOW SMOKE, HALOGEN FREE
2. COLOR: BLACK
3. PART WEIGHT: 5.8 lbs PER 100 FT
4. 60±5 SHORE A DUROMETER RATING
5. TEMPERATURE RANGE OF -40°F (-40°C) TO 194°F (90°C)
6. BRACKETS [] DENOTES DIMENSIONS ARE IN MILLIMETERS AND ARE FOR REFERENCE ONLY

TITLE		MLTEH/SH CUSHION SLEEVING PCSLSH-B-CR		
		CUSTOMER DRAWING		
ITEM REVISION NAME		N41304BS/01		
DATASET FILE NAME		N41304BS_DC/01A		
UNLESS OTHERWISE SPECIFIED, DIMENSIONAL TOLERANCES ARE: IN (mm)		PANDUIT		
.x ± .1 [2.54] .xxx ± .005 [.127] .xx ± .01 [.25] ANGLES ± 5 °				
MATERIAL:		SEE NOTES		
DRAWING NUMBER:		N41304BS_DC		
DRAWN BY	DATE	CHK	SCALE	SIZE
JAMB	12/11	ACC	4:1	A

REV	DATE	BY	CHK	APR	DESCRIPTION	ECN
01A	4/13	JAMB	MIM	RGRO	UPDATE DRAWING TO NEW GLOBAL PANDUIT TITLE BLOCK WITH PANDUIT LOGO. ADDED TO NOTE #6: *AND ARE FOR REFERENCE ONLY	SSECN01057
00A	12/11	JAMB	ACC'	---	DRAWING RELEASED	-----