



Chipsmall Limited consists of a professional team with an average of over 10 year of expertise in the distribution of electronic components. Based in Hongkong, we have already established firm and mutual-benefit business relationships with customers from,Europe,America and south Asia,supplying obsolete and hard-to-find components to meet their specific needs.

With the principle of “Quality Parts,Customers Priority,Honest Operation,and Considerate Service”,our business mainly focus on the distribution of electronic components. Line cards we deal with include Microchip,ALPS,ROHM,Xilinx,Pulse,ON,Everlight and Freescale. Main products comprise IC,Modules,Potentiometer,IC Socket,Relay,Connector.Our parts cover such applications as commercial,industrial, and automotives areas.

We are looking forward to setting up business relationship with you and hope to provide you with the best service and solution. Let us make a better world for our industry!



Contact us

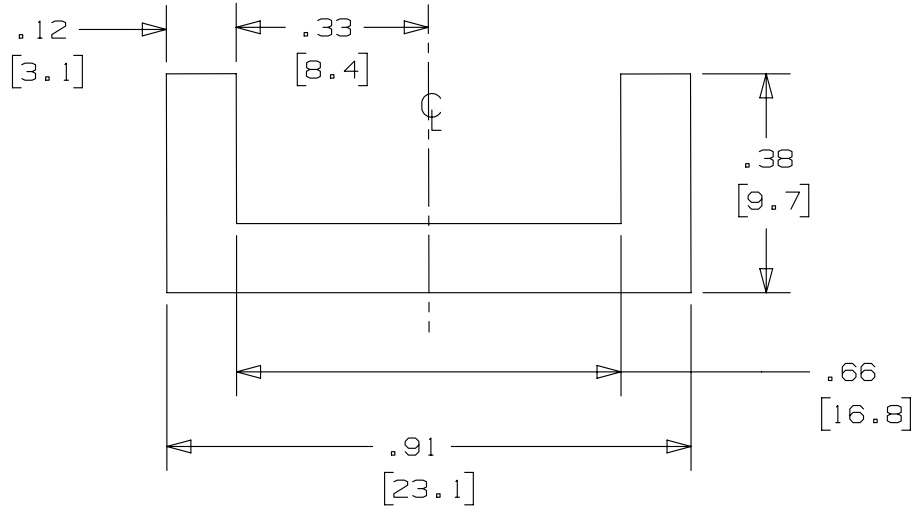
Tel: +86-755-8981 8866 Fax: +86-755-8427 6832

Email & Skype: info@chipsmall.com Web: www.chipsmall.com

Address: A1208, Overseas Decoration Building, #122 Zhenhua RD., Futian, Shenzhen, China



THIS COPY IS PROVIDED ON A RESTRICTED BASIS AND IS NOT TO BE USED IN ANY WAY DETRIMENTAL TO THE INTERESTS OF PANDUIT CORP.



NOTES:

1. MAT'L. - NEOPRENE:
RATING AS REQUIRED TO MEET MIL-R-6855 SPEC.
2. COLOR - BLACK
- Ⓐ 3. PART WEIGHT: 8.7 LBS, PER 100 FT.
4. 60±5 SHORE A DUROMETER RATING
5. TEMPERATURE RANGE OF -40° F (-40° C) TO 200° F (93° C)
6. DIM'S IN [BRACKETS] ARE MILLIMETERS.

REV	DATE	BY	CHK	APR	DESCRIPTION	ECN
02A	4/13	JAMB	MIM	RGRO	UPDAE DRAWING TO NEW GLOBAL PANDUIT TITLE BLOCK WITH PANDUIT LOGO	SSECN01049
01A	6/05	JAMB	EJD	SKB	Ⓐ REMOVED PART WGT *43.5 lbs PER 500 FT*	12683
00A	5/05	JMMR	EJD	SKB	DRAWING RELEASED	12198

TITLE MLTEH/SH CUSHION SLEEVING PCSSH-B-CR					
CUSTOMER DRAWING					
ITEM REVISION NAME N41202BS/02			PANDUIT		
DATASET FILE NAME N41202BS_DC/02A					
UNLESS OTHERWISE SPECIFIED, DIMENSIONAL TOLERANCES ARE: IN [mm]			MATERIAL: SEE NOTES		
.x ± .1 [2.54]		.xxx ± .005 [.127]		DRAWING NUMBER: N41202BS_DC	
.xx ± .01 [.25]		ANGLES ± 5 °		THIRD ANGLE PROJECTION	
DRAWN BY JMMR		DATE 5/05		CHK EJD	
SCALE 3:1		SHT 1 OF 1		SIZE A	