



Chipsmall Limited consists of a professional team with an average of over 10 year of expertise in the distribution of electronic components. Based in Hongkong, we have already established firm and mutual-benefit business relationships with customers from,Europe,America and south Asia,supplying obsolete and hard-to-find components to meet their specific needs.

With the principle of “Quality Parts,Customers Priority,Honest Operation,and Considerate Service”,our business mainly focus on the distribution of electronic components. Line cards we deal with include Microchip,ALPS,ROHM,Xilinx,Pulse,ON,Everlight and Freescale. Main products comprise IC,Modules,Potentiometer,IC Socket,Relay,Connector.Our parts cover such applications as commercial,industrial, and automotives areas.

We are looking forward to setting up business relationship with you and hope to provide you with the best service and solution. Let us make a better world for our industry!



## Contact us

Tel: +86-755-8981 8866 Fax: +86-755-8427 6832

Email & Skype: info@chipsmall.com Web: www.chipsmall.com

Address: A1208, Overseas Decoration Building, #122 Zhenhua RD., Futian, Shenzhen, China





## SecureLinx Spider Duo Quick Start Guide

LANTRONIX®



## SecureLinx Spider Duo Quick Start Guide

## SecureLinx Spider Duo QUICK START GUIDE CONTENTS

---

Overview .....	2
What's In The Box.....	3
Installation and Network Settings.....	3-6
Spider Duo Web Configuration .....	7-9
Target Computer Setup.....	9-10
Client System Requirements .....	10
Connection to Target Computer and Basic Operation.....	11-12
Exit and Logout.....	13
Power Control Unit (PCU).....	13
Contact Information.....	15

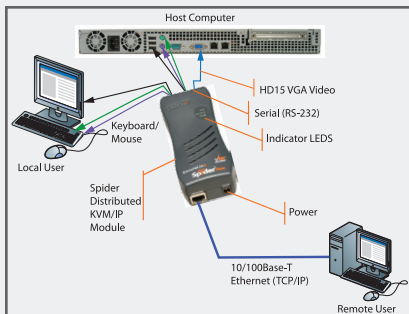
## OVERVIEW

### SecureLinux Spider Duo

The SecureLinux Spider Duo™ is a distributed KVM/IP device designed to securely provide monitoring and control of one (target) computer system locally and by one or more remote users. The remote user (client) accesses the Spider Duo over a local or wide area network connection using a standard web browser.

There are two models: one with both PS/2 and USB keyboard/mouse interfaces (software selectable), and one for USB-only systems. The color coded plugs on the ends of the cables for the keyboard, mouse, USB port and video are designed to plug directly into the target system's corresponding connector. Hang the Spider Duo by the cables or secure it out of the way.

#### Typical Spider Duo Configuration



This Quick Start Guide will step you through the hardware installation and configuration in a typical environment.

## WHAT'S IN THE BOX

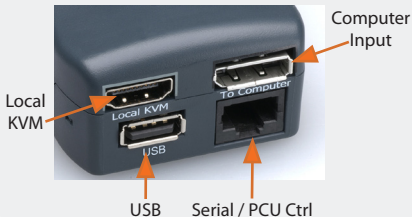
In addition to the Spider Duo distributed KVM/IP module, the box contains the following items:

- Local KVM cable
- Computer input cable
- Mounting kit
- Quick Start Guide
- CD-ROM containing documentation and utilities
- External AC/DC Power Supply

**Note:** An optional power control unit is available (part number PCU100-01). See page 13 for details.

## INSTALLATION AND NETWORK SETTINGS

### Local port, computer input connectors, USB, Serial/ PCU CTRL port

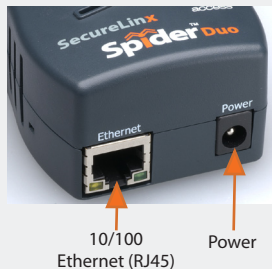


### Serial RS-232 / PCU CTRL Pinouts

Pin #	Pin Name	
1	RTS	(Out)
2	+5V	(Out)
3	TX	(Out)
4	PCU Sense	(In)
5	GND	(Out)
6	RX	(In)
7	PCU Drive	(Out)
8	CTS	(In)

## INSTALLATION AND NETWORK SETTINGS CONTINUED

### Ethernet and Power Port



### Spider Duo LED indicators

LEDs	Color	Description
ID	Amber	Optionally lit to assist in finding unit.
Sys OK	Blue	Blinks upon bootup. Steady when up and healthy
PCU	Green	Steady on when power is being supplied through PCU

## INSTALLATION AND NETWORK SETTINGS CONTINUED

---

1. Plug the RJ45 end of the included serial cable into the Spider Duo's serial port. Plug the DB9F end into the serial (COM) port of a PC/laptop running a terminal emulation (e.g. HyperTerminal). The default serial port settings are **9600 bits per second, 8 data bits, no parity, 1 stop bit, no flow control**. Plug the power adaptor into the Spider Duo's power connector.
2. Insert color coded plugs into connectors with matching border on the Spider Duo. Plug the Video, USB, and PS/2 keyboard/mouse (if applicable) cables into the target computer. For transparent local access, connect cables to local keyboard, video and mouse. The blue Sys OK LED will illuminate and flashes to indicate that it is booting up. Bootup is complete within approximately one minute. The blue LED stops flashing and remains illuminated.
3. Upon bootup, the terminal window displays the IP Configuration screen. At the command prompt type **config** and press **Enter**.
4. To change the default **IP auto configuration** from DHCP to a static IP address, at the IP autoconfiguration prompt type **none** and press **Enter**.



## INSTALLATION AND NETWORK SETTINGS CONTINUED

```
Welcome!  
Choose a command for the following features:  
-Initial IP configuration: "config".  
-Reset device: "reset".  
[172.18.100.17 spider]>
```

5. Follow the prompts to enter the unit's **IP address**, **subnet mask**, **default gateway**, and **LAN interface** information.

```
[172.18.100.17 spider]> config  
IP autoconfiguration (none/dhcp/bootp) [dhcp]: none  
IP [172.18.100.17]:  
NetMask [255.255.0.0]:  
Gateway (0.0.0.0 for none) [172.18.0.1]:  
LAN interface speed (auto/10/100) [auto]:  
LAN interface duplex mode (auto/half/full) [auto]:  
Are the entered values correct? Enter y for Yes, n for No or c to Cancel y  
  
Configuring device ...
```

6. Press **Enter**, to accept the changes. The system takes about 20 seconds to complete. Press **Enter** once again at the prompt to display the updated IP address.
7. Plug an Ethernet cable connected to your network into the Ethernet port. The Link LED illuminates.

## SPIDER DUO WEB CONFIGURATION

1. Access the Spider Duo over the network using a favorite web browser by entering `https://` for a secure SSL connection or `http://` for an insecure connection and its IP address in the address bar.
2. Enter your user name (default is **sysadmin**) and password (default is **PASS**) at the prompt. The Spider Duo home page displays.



## SPIDER DUO WEB CONFIGURATION CONTINUED

3. The following are a few key configurations:

### Keyboard/Mouse:

- a. Select **Interfaces**→**Keyboard/Mouse** from the web page.
- b. To change the target interface keyboard/mouse settings from the default (**Auto**) to force PS/2 or USB target interface, select the appropriate option from the **Host Interface** drop-down menu.
- c. To change the USB mouse type, select the appropriate operating system option from the **USB Mouse Type** drop-down menu.
- d. Click **Save** to store your settings in nonvolatile memory.

### Security:

- a. Select **Services**→**Security** from the web page.
- b. To require SSL encryption, select **Force HTTPS for Web access**.
- c. Click **Save** to store your settings in nonvolatile memory.

### Network TCP Ports and Services:

- a. Select **Interfaces** from the web page. The Network page displays.
- b. Under Network Miscellaneous Settings, modify the TCP ports as necessary. The client system requires the ability to access the Spider Duo's IP address as well as have port 80 (HTTP) and 443 (HTTPS) open. Consult your system administrator if your system's firewalls and NAT device requires reconfiguration or change to these values.

## SPIDER DUO WEB CONFIGURATION CONTINUED

---

### Performance:

- a. Select **Interfaces**→**KVM Console Settings** from the web page.
- b. If necessary, under Transmission Encoding, modify the video compression levels and color depth for slower connections.

## TARGET COMPUTER SETUP

---

The Spider Duo recognizes several varieties of video display formats with resolutions up to 1600 x 1200 @ 60Hz. (Refer to the User Guide for a list of supported video formats).

Minimize bandwidth and power consumption by setting the target computer's video resolution to the minimum setting required for your remote monitoring application. The following video modes are recommended:

800 x 600 @ 60Hz  
1024 x 768 @ 60Hz  
1280 x 1024 @ 60Hz  
1600 x 1200 @ 60Hz

1. On a Windows target system, select **Control Panel**→**Display**→**Settings**. Modify the screen resolution value as necessary.
2. Select **Control Panel**→**Display**→**Settings**→**Advanced**→**Monitor**. Modify the screen refresh rate (consult the appropriate documentation when using a typical video card or another operating system on the target computer).

## TARGET COMPUTER SETUP CONTINUED

Use generic mouse drivers when using PS/2 mouse interface for optimum mouse control during remote sessions. Set the mouse pointer speed to a middle setting with no acceleration or snap-to effects.

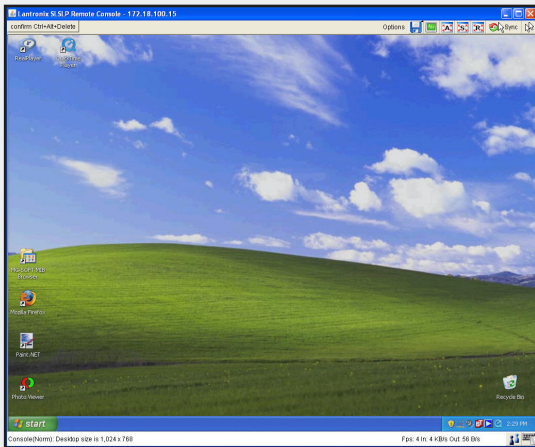
3. On a Windows target system, select **Control Panel**→**Mouse**→**Pointer Options**, set the pointer speed to medium and disable **Enhanced pointer precision**. For Linux GUIs, set the mouse acceleration to exactly 1 and the threshold to exactly 1.

## CLIENT SYSTEM REQUIREMENTS

The client system must have a web browser (such as Microsoft Internet Explorer, Mozilla Firefox, and Netscape Navigator) and a Java Virtual Machine (version 1.4 or higher) installed. Enable Java on the web browser.



## CONNECTION TO TARGET COMPUTER AND BASIC OPERATIONS

1. Click the **KVM Console** link from the Home page to begin remote control of the attached target computer. Lantronix Spider Duo Remote Console Java applet launches in its own window (in front or behind the Spider Duo web browser).




**Note:** Do not close the Spider Duo home page from the web browser. Closing the web browser ends the connection to the Lantronix Spider Duo Remote Console window.

## CONNECTION TO TARGET COMPUTER CONTINUED

2. To operate within the remote target system, move your mouse along the screen to the Lantronix Spider Duo Remote Console window. The mouse will navigate along the remote target system's screen.
3. To optimize the picture, press the video adjustment icon  in the top menu bar.
4. To fit multiple remote console windows on the desktop, select **Options** → **Scaling** from the pull-down menu bar to decrease the remote console window's size.
5. If the local and remote cursors desynchronize, press the Sync  button.  
If the **Sync** button does not synchronize the cursors, select **Options** → **Mouse Handling** → **Intelligent Sync**.
6. To suppress the local cursor in the remote console window, select **Options** → **Mouse Handling** → **Mouse Mode** → **Single Mouse Mode** and click within the window. Restore the local cursor by pressing the left Alt key + F12.
7. To distinguish between the local and remote cursors while in the remote console window, select **Options** → **Local Cursor** and choose the appropriate cursor type.

## EXIT AND LOGOUT

---

1. To exit the Lantronix Spider Duo Remote Console, click the  button to close the window.
2. To log out of the Spider Duo web page from the browser, click **Logout**.

## POWER CONTROL UNIT (PCU)

---

The optional PCU can be used to remotely manage power of the target computer.





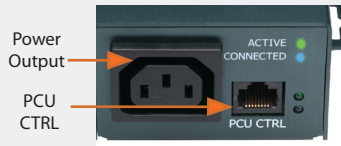
## WHAT'S IN THE BOX

In addition to the PCU module, the box contains the following items:

- AC Power cord (input)
- AC Power cord IEC60320/C13 to IEC60320/C14 (output)
- Cable RJ45 to RJ45, CAT-5 (10 ft)

## POWER CONTROL UNIT (PCU) - INSTALLATION

1. Connect power output plug to target PC.
2. Connect RJ45 cable from PCU to Spider Duo PCU CTRL port.
3. Connect power input plug to AC power.  
Green LED = ACTIVE, Blue LED = CONNECTED



## CONTACT INFORMATION

---

For questions and technical support, please check our online knowledge base at [www.lantronix.com/support](http://www.lantronix.com/support)

Lantronix  
15353 Barranca Parkway, Irvine, CA 92618, USA  
Phone: (949) 453-3990 or Fax: (949) 453-3995  
[www.lantronix.com](http://www.lantronix.com)

**NOTES**

---

## NOTES

---



[www.lantronix.com](http://www.lantronix.com)