



Chipsmall Limited consists of a professional team with an average of over 10 year of expertise in the distribution of electronic components. Based in Hongkong, we have already established firm and mutual-benefit business relationships with customers from,Europe,America and south Asia,supplying obsolete and hard-to-find components to meet their specific needs.

With the principle of “Quality Parts,Customers Priority,Honest Operation,and Considerate Service”,our business mainly focus on the distribution of electronic components. Line cards we deal with include Microchip,ALPS,ROHM,Xilinx,Pulse,ON,Everlight and Freescale. Main products comprise IC,Modules,Potentiometer,IC Socket,Relay,Connector.Our parts cover such applications as commercial,industrial, and automotives areas.

We are looking forward to setting up business relationship with you and hope to provide you with the best service and solution. Let us make a better world for our industry!



Contact us

Tel: +86-755-8981 8866 Fax: +86-755-8427 6832

Email & Skype: info@chipsmall.com Web: www.chipsmall.com

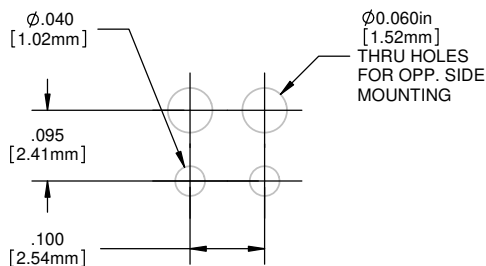
Address: A1208, Overseas Decoration Building, #122 Zhenhua RD., Futian, Shenzhen, China



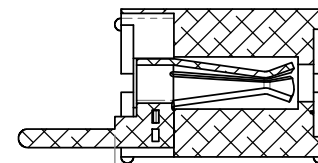
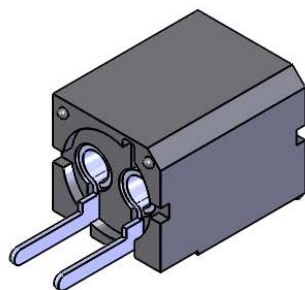
NOTES:

1. ROHS COMPLIANT
2. MATERIAL: HOUSING - NYLON 6/6, U.L.94-V0 RATING, BLACK (UNLESS OTHERWISE SPECIFIED)
CONTACTS - PHOSPHOR BRONZE, TIN PLATED
3. MOUNTING: SPACING ON .250" [6.35mm] CENTERS. OPTIONAL .060" [1.52mm] HOLES FOR OPPOSITE SIDE MOUNTING. SAME SIDE MOUNTING, DELETE THE .060" [1.52mm] HOLES (SEE PATTERN)
4. OPTO: STANDARD VISIBLE, IR LED, OR PHOTO DETECTOR WITH LEADS ON .100" [2.54mm] CENTERS
5. LED LEAD DIMENSIONS: MINIMUM .017" [.43mm] ROUND OR SQUARE SHAPE. MAXIMUM .030" [.76mm] THICKNESS - .040" [1.02mm] WIDTH
6. U.S. & FOREIGN PATENTS ISSUED

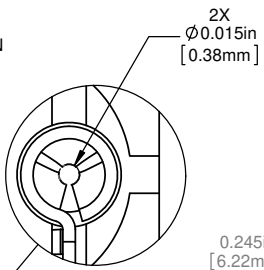
REVISIONS					
EC N #	REV.	DESCRIPTION	DATE	INITIALS	CHKD
	001	REVISED PER EC R 111009AZ01	6/20/10	SMU	DZ
426	002	REVISED PER EC R 041212KH02	4/13/12	KH	ED



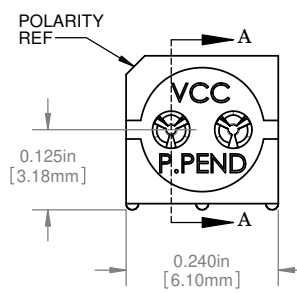
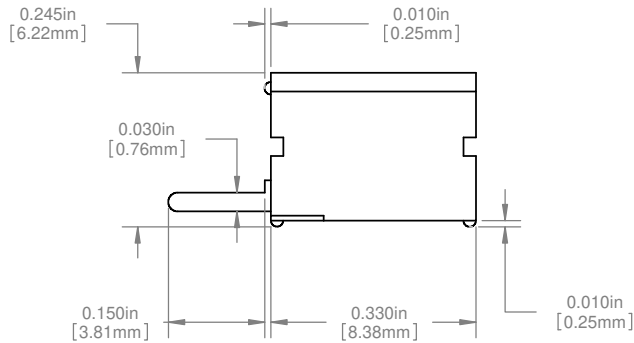
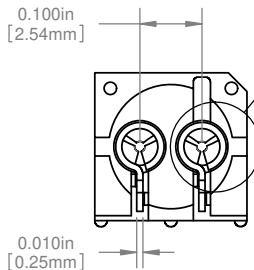
PCB HOLE PATTERN



SECTION A-A



DETAIL B SCALE 10 : 1



ORDERING CODE: PCV 220

DIMENSION STYLE: INCHES / MM GENERAL TOLERANCES UNLESS OTHERWISE SPECIFIED		APPROVAL		DATE
INCHES	MM	DRAWN	SMU	6/20/10
X	± .020 ± .508	CHECKED	DZ	6/20/10
XX	± .010 ± .254			
XXX	± .005 ± .127			
ANGLE 1				
BREAK ALL CORNERS AND SHARP EDGES 60° MAX				
THIRD ANGLE PROJECTION		MATERIAL		
PROPRIETARY AND CONFIDENTIAL		SEE NOTES		
THE INFORMATION CONTAINED IN THIS DRAWING IS THE SOLE PROPERTY OF VISUAL COMMUNICATIONS COMPANY, INC. ANY REPRODUCTION IN PART OR AS A WHOLE WITHOUT THE WRITTEN PERMISSION OF VISUAL COMMUNICATIONS COMPANY, INC IS PROHIBITED.		FINISH		
		SEE NOTES		
		DO NOT SCALE DRAWING		

TITLE:		SCALE: 5:1	
SIZE	DWG. NO.	REV	
B	PCV 220	002	
SHEET 1 OF 1			

VCC
12780 DANIELSON CT SUITE A, POWAY, CA 92064 U.S.A
PHONE: (800) 522-5546 EMAIL: vccsales@vccllite.com

P-C-LITE® VERTICAL MOUNT