



Chipsmall Limited consists of a professional team with an average of over 10 year of expertise in the distribution of electronic components. Based in Hongkong, we have already established firm and mutual-benefit business relationships with customers from,Europe,America and south Asia,supplying obsolete and hard-to-find components to meet their specific needs.

With the principle of “Quality Parts,Customers Priority,Honest Operation,and Considerate Service”,our business mainly focus on the distribution of electronic components. Line cards we deal with include Microchip,ALPS,ROHM,Xilinx,Pulse,ON,Everlight and Freescale. Main products comprise IC,Modules,Potentiometer,IC Socket,Relay,Connector.Our parts cover such applications as commercial,industrial, and automotives areas.

We are looking forward to setting up business relationship with you and hope to provide you with the best service and solution. Let us make a better world for our industry!



## Contact us

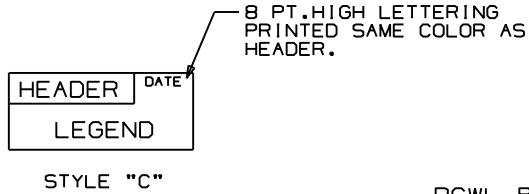
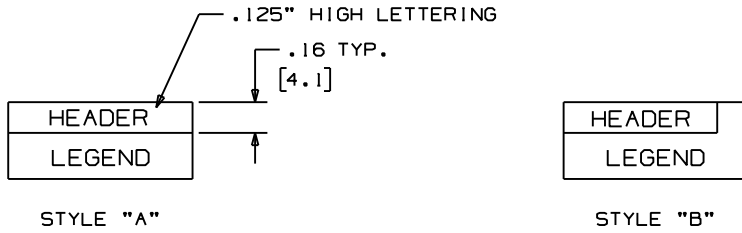
Tel: +86-755-8981 8866 Fax: +86-755-8427 6832

Email & Skype: info@chipsmall.com Web: www.chipsmall.com

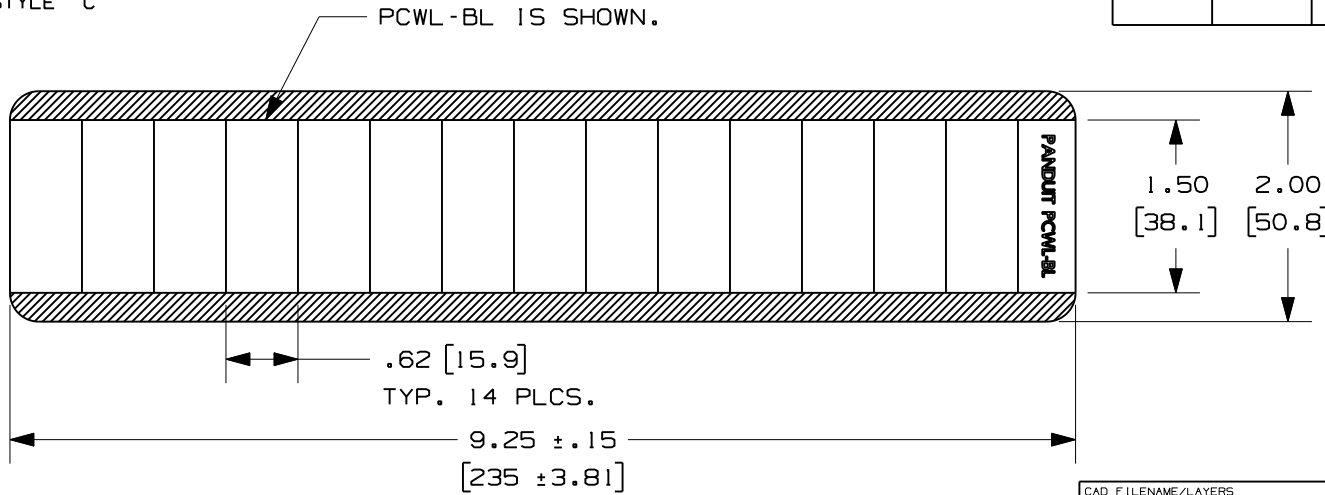
Address: A1208, Overseas Decoration Building, #122 Zhenhua RD., Futian, Shenzhen, China



THIS COPY IS PROVIDED ON A RESTRICTED BASIS AND IS NOT TO BE USED IN ANY WAY DETRIMENTAL TO THE INTERESTS OF PANDUIT CORP.



PART NUMBER	HEADER STYLE	HEADER COLOR	HEADER	LEGEND/BACKGND COLOR	LEGEND
PCWL - REJ	C	RED	REJECTED	RED/WHITE	REASON BY
PCWL - ACC	B	GREEN	ACCEPTED	GREEN/WHITE	BY DATE
PCWL - CAL	A	GREEN	CALIBRATION	GREEN/WHITE	BY ___ DATE ___ DUE _____
PCWL - BL	--	--	--	--	--
PCWL - CALD	A	BLACK	CALIBRATED	BLACK/WHITE	BY ___ DATE ___ DUE _____
PCWL - ICAL	A	GREEN	CALIBRATION	GREEN/WHITE	BY ___ DATE ___ DUE _____ GAGE ID _____



- NOTES:  
 1. MILLIMETER ARE IN ( ).  
 2. 14 MARKERS PER CARD.  
 3. 25 CARDS PER BOX.

CAD FILENAME/LAYERS 100318AC\_DC\_C10658/06A

PANDUIT CORP. TINLEY PARK, ILLINOIS

CUSTOMER DRAWING PCWL PRETITLED  
WRITE-ON MARKER CARD

UNLESS OTHERWISE SPECIFIED,  
DIMENSIONAL TOLERANCES ARE:  
 (.X) ± .1 (.XXX) ± .025  
 (.XX) ± .050 ANGLES ±

UNLESS OTHERWISE SPECIFIED,  
ALL DIMENSIONS ARE GIVEN  
IN INCHES, THIRD ANGLE PROJECTION.

DRAWN BY RVU

MAT'L:

SCALE NTS

DATE 4/3/08

GMC1  
WHITE  
VINYL CLOTH

DRAWING NO.

C10658

DWG  
A  
SIZE

REV	DATE	BY	CHK	DESCRIPTION	ECN	R	CUST	SUP
0	7/16/08	RVU		DRAWING RELEASE.	5359	R		