



Chipsmall Limited consists of a professional team with an average of over 10 year of expertise in the distribution of electronic components. Based in Hongkong, we have already established firm and mutual-benefit business relationships with customers from,Europe,America and south Asia,supplying obsolete and hard-to-find components to meet their specific needs.

With the principle of “Quality Parts,Customers Priority,Honest Operation,and Considerate Service”,our business mainly focus on the distribution of electronic components. Line cards we deal with include Microchip,ALPS,ROHM,Xilinx,Pulse,ON,Everlight and Freescale. Main products comprise IC,Modules,Potentiometer,IC Socket,Relay,Connector.Our parts cover such applications as commercial,industrial, and automotives areas.

We are looking forward to setting up business relationship with you and hope to provide you with the best service and solution. Let us make a better world for our industry!



Contact us

Tel: +86-755-8981 8866 Fax: +86-755-8427 6832

Email & Skype: info@chipsmall.com Web: www.chipsmall.com

Address: A1208, Overseas Decoration Building, #122 Zhenhua RD., Futian, Shenzhen, China





40W Dimmable Constant Current LED Driver
PDA040W Waterproof LED Driver with 0-10V Dimming



Features

- Class 2 Output per UL1310
- OVP, OCP, Over-Load and Short-Circuit Protection & Brownout Protection
- IP67 Rated
- ≥ 0.9 Power Factor Correction & THD <20%

Applications

- Down lights
- Area Lights
- Architectural lighting

Safety Approvals

- cUL/UL 8750
- Class 2 Output per UL1310
- CE
- IEC/EN61347-1, IEC/EN61347-2-13

Mechanical Characteristics

- Length: 162.5mm (6.39in)
- Width: 43mm (1.69in)
- Height: 32mm (1.26in)
- Weight: 342g (12.1oz)

Output Specifications

Model	DC Output Voltage			Output Current	Output Power
	Min.	Typ.	Max.		
PDA040W-700B	37.8V	-	54V	700mA	38W
PDA040W-1A0B	26.6V	-	38V	1050mA	40W
PDA040W-1A4B	18.2V	-	26V	1400mA	37W

Phihong is not responsible for any error, and reserves the right to make changes without notice. Please visit our website at www.phihong.com for the most up-to-date specifications and contact information.

INPUT:

AC Input Voltage Rating
100VAC to 277VAC

AC Input Frequency
47~63Hz

Maximum Input Current
≤ 0.8A

Leakage Current
0.25mA maximum

Power Factor
≥ 0.9

THD
< 20%

OUTPUT:
Output Current Ripple
<40%

Efficiency

Model	Typical Efficiency
PDA040W-700B	89%
PDA040W-1A0B	88%
PDA040W-1A4B	88%

Auxiliary Power Supply
12V semi regulated (11-14Vdc)
0-10mA

Voltage Dimming Function:
0-10VDC

Resistive Dimming*

Resistor must be placed between Dim+ and Dim- for operation.
See following page for dimming table.

Environmental:

Temperature

Operation case +75°C
Non-operation -40 to +80°C
Operating Humidity 20 to 95%

*Output derates from 50°C to 62°C Ta

EMC

FCC 47 Part 15 Class B, EN55015 Class B

Immunity

IEC61000-4-2
IEC61000-4-4
IEC61000-4-5
IEC61000-4-11

Dielectric Withstand (Hi-pot) Test

Primary to secondary: 3000VAC for 1 minute, 10mA

Insulation Resistance

Primary to secondary: >10M Ohm 500VDC, 1 Minute

FEATURES:

Short-Circuit Protection

The PSU will withstand a short circuit across the outputs without damage

Input Over Current Protection

The input power line will be fused with a 2A/300V fuse

Output Over-voltage Protection

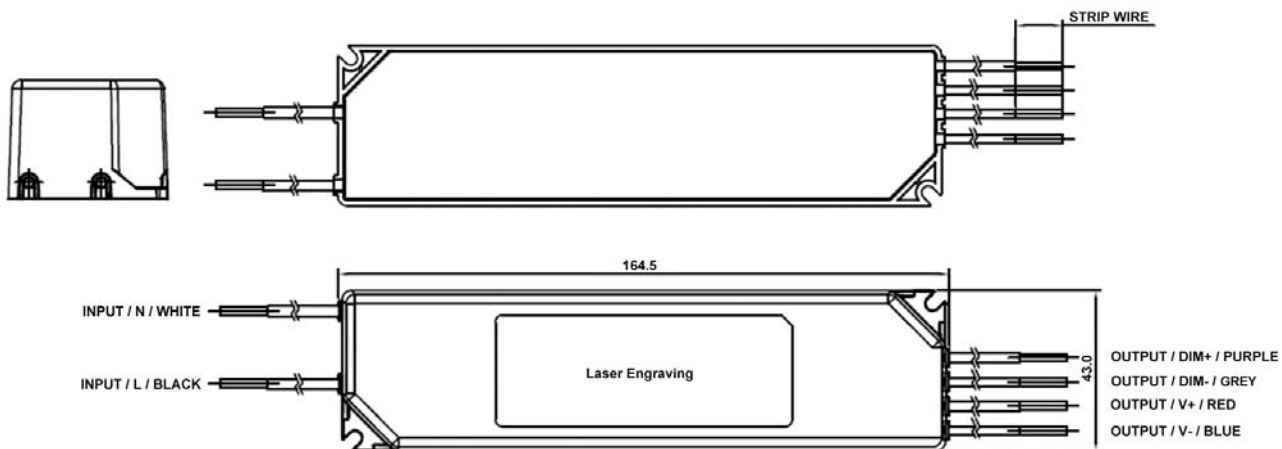
Auto shutdown

Input / Output Connections

Position	Terminal Color	Specification	Length
Input	Black	AWG16 Solid Wire	350mm
	White	AWG16 Solid Wire	350mm
Output	Red	AWG18 Solid Wire	350mm
	Blue	AWG18 Solid Wire	350mm
Dim+	Purple	AWG20 Solid Wire	350mm
Dim-	Grey	AWG20 Solid Wire	350mm

Warranty

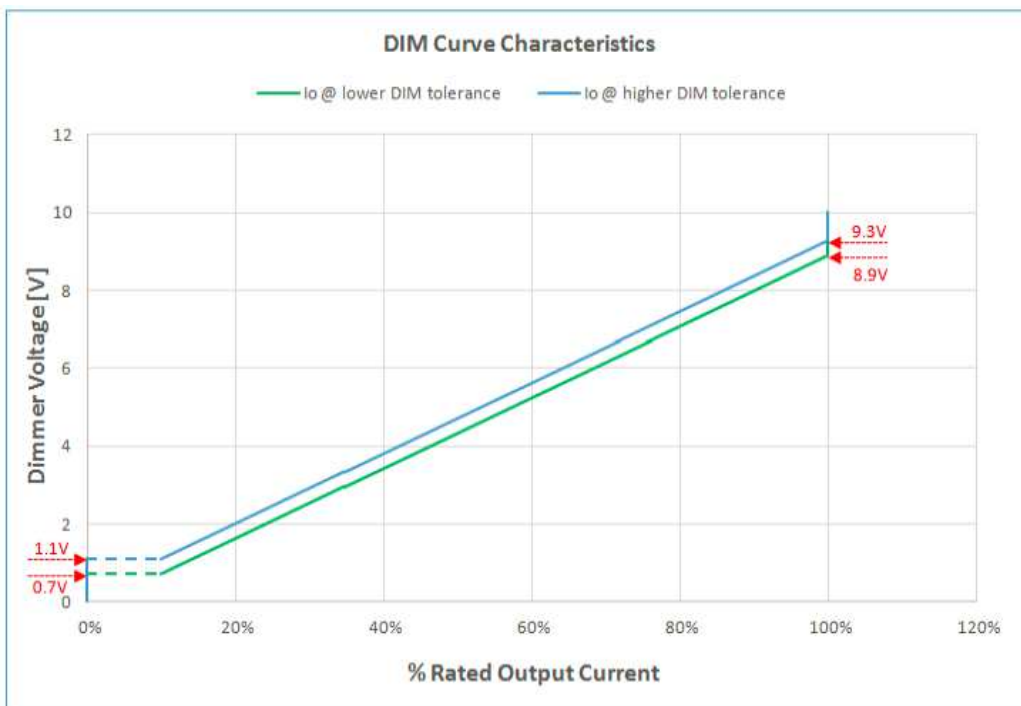
5 Years



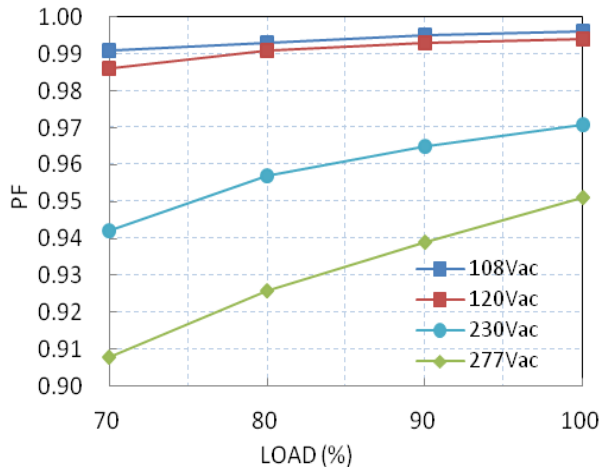
Dimming Characteristics

Resistive Dimming Functions

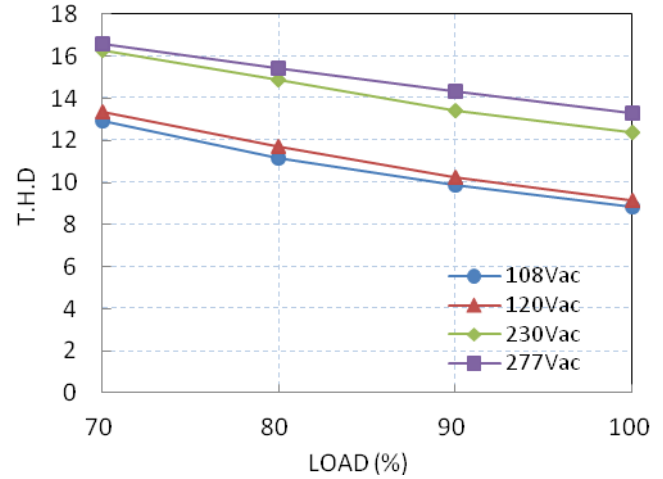
Resistance Value	0kΩ	9kΩ	13kΩ	23kΩ	45kΩ	68kΩ	91kΩ
Dim Voltage	0V	0.9V	1.3V	2.3V	4.5V	6.8V	9.1V
Output Current	Off	Off	15%	25%	50%	75%	100%



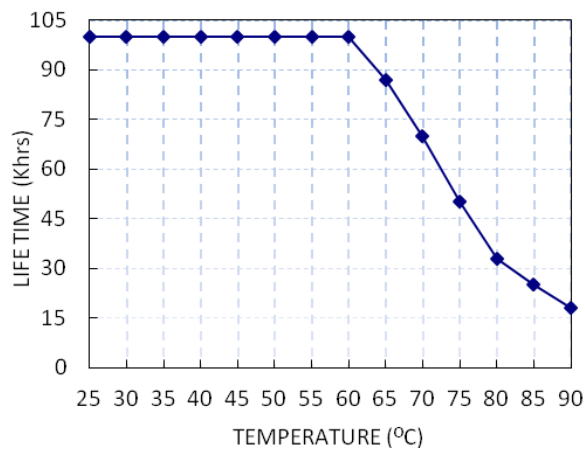
Power Factor vs. Load



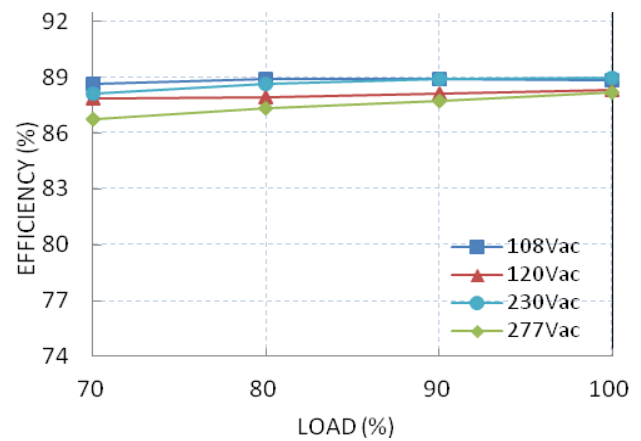
Total Harmonic Distortion vs. Load



Lifetime vs. Tc

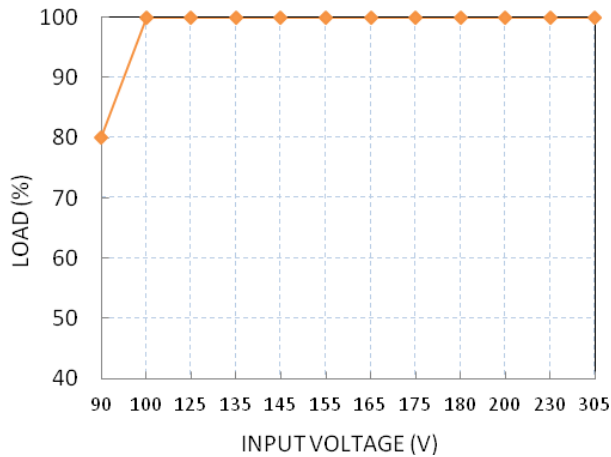


Efficiency vs. Load (PDA040W-700B)



Temperature Rating

Static Characteristic: Load vs. Input Voltage



Derating Curve: Load vs Ta

