



Chipsmall Limited consists of a professional team with an average of over 10 year of expertise in the distribution of electronic components. Based in Hongkong, we have already established firm and mutual-benefit business relationships with customers from,Europe,America and south Asia,supplying obsolete and hard-to-find components to meet their specific needs.

With the principle of "Quality Parts,Customers Priority,Honest Operation,and Considerate Service",our business mainly focus on the distribution of electronic components. Line cards we deal with include Microchip,ALPS,ROHM,Xilinx,Pulse,ON,Everlight and Freescale. Main products comprise IC,Modules,Potentiometer,IC Socket,Relay,Connector.Our parts cover such applications as commercial,industrial, and automotives areas.

We are looking forward to setting up business relationship with you and hope to provide you with the best service and solution. Let us make a better world for our industry!



Contact us

Tel: +86-755-8981 8866 Fax: +86-755-8427 6832

Email & Skype: info@chipsmall.com Web: www.chipsmall.com

Address: A1208, Overseas Decoration Building, #122 Zhenhua RD., Futian, Shenzhen, China





40W Constant Voltage LED Driver
PDA041B Waterproof LED Driver Non-Dimming



Features

- Class 2 per UL1310
- OVP, OCP, Over-Load and Short-Circuit Protection
- >0.9 Power Factor Correction
- 5 Year Warranty
- IP67 Rating - waterproof
- THD <20%
- UL 8750 Compliant
- Brownout/Brownout Recovery

Applications

- Down lights
- Area Lights
- Architectural lighting

Safety Approvals

- cUL/UL

Mechanical Characteristics

- Length: 95mm (3.74in)
- Width: 71mm (2.79in)
- Height: 32mm (1.26in)
- Weight: 340g (11.99oz)

Output Specifications

| Model | Output Current Range | | | DC Output Voltage | Output Power |
|--------------|----------------------|------|-------|-------------------|--------------|
| | Min. | Typ. | Max. | | |
| PDA041B-24VB | 0A | - | 1.67A | 24V | 40W |
| PDA041B-48VB | 0A | - | 0.83A | 48V | 40W |

Phihong is not responsible for any error, and reserves the right to make changes without notice. Please visit our website at www.phihong.com for the most up-to-date specifications and contact information.

INPUT:

AC Input Voltage Rating
120VAC to 277VAC

AC Input Frequency
47~63Hz

Maximum Input Current
≤ 0.8A

Leakage Current
0.5mA maximum

Power Factor
≥ 0.9

THD
Less than 20%

OUTPUT:
Output Voltage Ripple
≤8% (p-p)

Efficiency
87% at 277VAC

Environmental:

| | |
|--------------------|--------------|
| Temperature | |
| Operation case* | -40 to +80°C |
| Non-operation | -40 to +82°C |
| Operating Humidity | 20 to 95% |

*Output derates from 50°C to 70°C Ta

EMC

FCC 47 Part 18 Class B

Immunity

IEC61000-4-2
IEC61000-4-4
IEC61000-4-5
IEC61000-4-11

Dielectric Withstand (Hi-pot) Test

Primary to secondary: 3000VAC for 1 minute, 10mA

Insulation Resistance

Primary to secondary: >10M Ohm 500VDC, 1 Minute

Features

Short-Circuit Protection

The PSU will withstand a short circuit across the outputs without damage

Input Over Current Protection

The input power line will be fused with a 2A/300V fuse

Output Over-voltage Protection

Auto shutdown

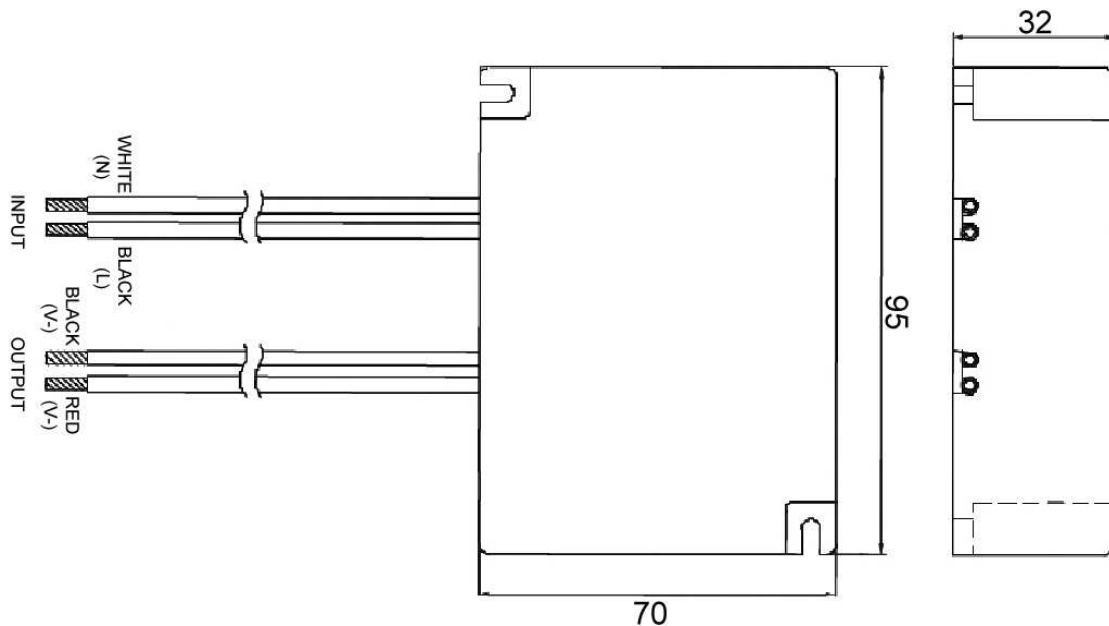
Input / Output Connections

| Position | Terminal Color | Specification |
|----------|----------------|------------------|
| Input | Black | AWG16 Solid Wire |
| | White | AWG16 Solid Wire |
| Output | Red | AWG18 Solid Wire |
| | Black | AWG18 Solid Wire |

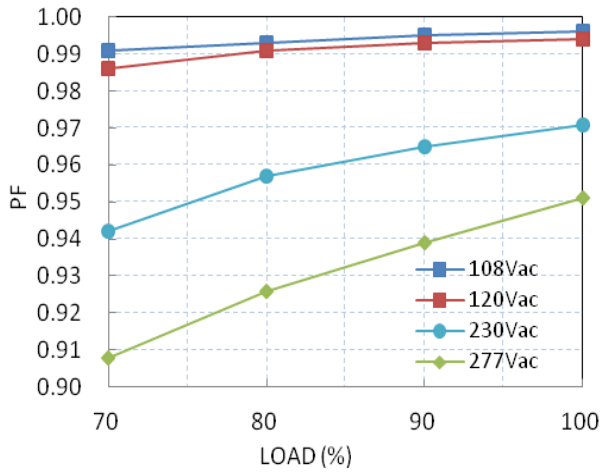
Dimension Diagram unit: mm

Warranty

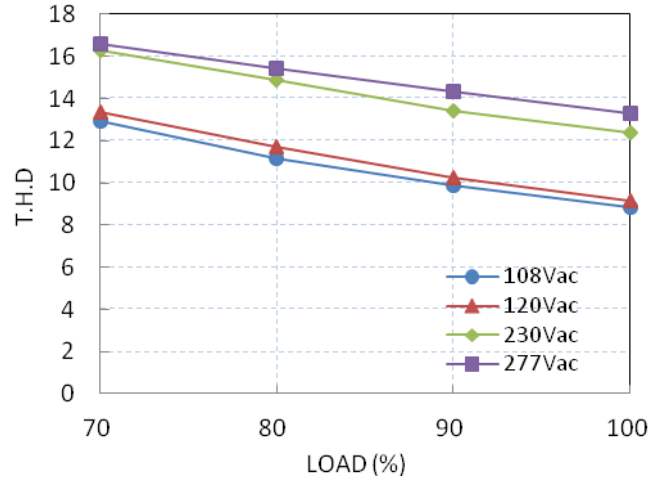
5 Years



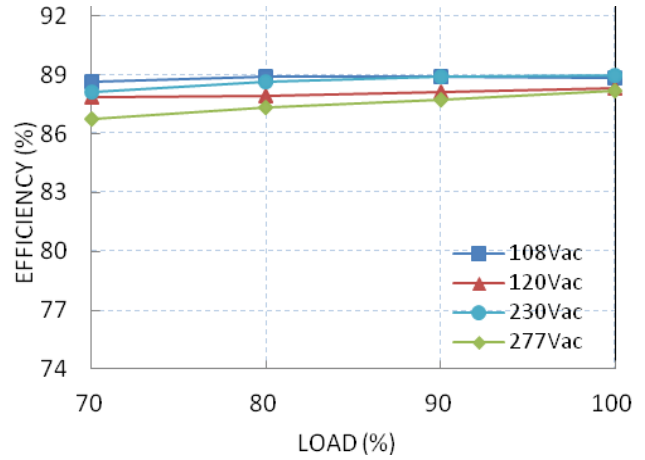
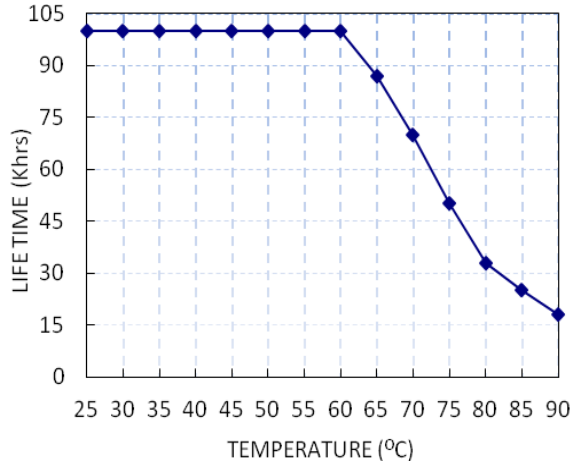
Power Factor vs. Load



Total Harmonic Distortion vs. Load

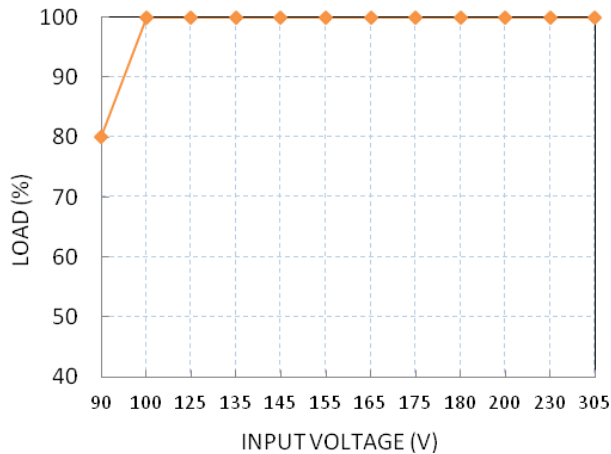


Lifetime vs. Tc



Temperature Rating

Static Characteristic: Load vs. Input Voltage



Derating Curve: Load vs Ta

