



Chipsmall Limited consists of a professional team with an average of over 10 year of expertise in the distribution of electronic components. Based in Hongkong, we have already established firm and mutual-benefit business relationships with customers from,Europe,America and south Asia,supplying obsolete and hard-to-find components to meet their specific needs.

With the principle of “Quality Parts,Customers Priority,Honest Operation,and Considerate Service”,our business mainly focus on the distribution of electronic components. Line cards we deal with include Microchip,ALPS,ROHM,Xilinx,Pulse,ON,Everlight and Freescale. Main products comprise IC,Modules,Potentiometer,IC Socket,Relay,Connector.Our parts cover such applications as commercial,industrial, and automotives areas.

We are looking forward to setting up business relationship with you and hope to provide you with the best service and solution. Let us make a better world for our industry!



## Contact us

Tel: +86-755-8981 8866 Fax: +86-755-8427 6832

Email & Skype: info@chipsmall.com Web: www.chipsmall.com

Address: A1208, Overseas Decoration Building, #122 Zhenhua RD., Futian, Shenzhen, China





**40W Dimmable Constant Current LED Driver  
PDA041W Waterproof LED Driver with 0-10V Dimming**



**Features**

- Class 2 per UL1310
- OVP, OCP, Over-Load and Short-Circuit Protection
- >0.9 Power Factor Correction
- 5 Year Warranty
- IP67 Rating - waterproof
- THD <20%
- UL 8750 Compliant
- 0-10V and Resistive Dimming
- Brownout/Brownout Recovery

**Applications**

- Down lights
- Area Lights
- Architectural lighting

**Safety Approvals**

- cUL/UL

**Mechanical Characteristics**

- Length: 95mm (3.74in)
- Width: 71mm (2.79in)
- Height: 32mm (1.26in)
- Weight: N/A

**Output Specifications**

Model	DC Output Voltage			Output Current	Output Power
	Min.	Typ.	Max.		
PDA041W-700B	39V	-	54V	700mA	38W
PDA041W-1A0B	28V	-	38V	1050mA	40W
PDA041W-1A4B	18V	-	26V	1400mA	37W

Phihong is not responsible for any error, and reserves the right to make changes without notice. Please visit our website at [www.phihong.com](http://www.phihong.com) for the most up-to-date specifications and contact information.

**INPUT:**

**AC Input Voltage Rating**  
120VAC to 277VAC

**AC Input Frequency**  
47~63Hz

**Maximum Input Current**  
≤ 0.8A

**Leakage Current**  
0.5mA maximum

**Power Factor**  
≥ 0.9

**THD**  
Less than 20%

**OUTPUT:**  
**Output Current Ripple**  
<40%

**Efficiency**

Model	Typical Efficiency
PDA41W-700B	89%
PDA41W-1A0B	88.5%
PDA41W-1A4B	88%

**Auxiliary Power Supply**  
12V semi regulated (11-14Vdc)  
0-10mA

**Dimming Function:**  
Resistance or 0-10VDC dimming  
(See Characteristics below)  
Resistor must be placed between Dim+ and Dim- for operation.  
See following page for dimming table.

**Environmental:**

**Temperature**

Operation\*                   -40 to +62°C  
Non-operation               -40 to +80°C  
Operating Humidity        20 to 95%

\*Output derates from 50°C to 62°C

**Warranty**

5 Years

**EMC**

FCC 47 Part 18 Class B

**Immunity**

IEC61000-4-2  
IEC61000-4-4  
IEC61000-4-5  
IEC61000-4-11

**Dielectric Withstand (Hi-pot) Test**

Primary to secondary: 3000VAC for 1 minute, 10mA

**Insulation Resistance**

Primary to secondary: >10M Ohm 500VDC, 1 Minute

**FEATURES:**

**Short-Circuit Protection**

The PSU will withstand a short circuit across the outputs without damage

**Input Over Current Protection**

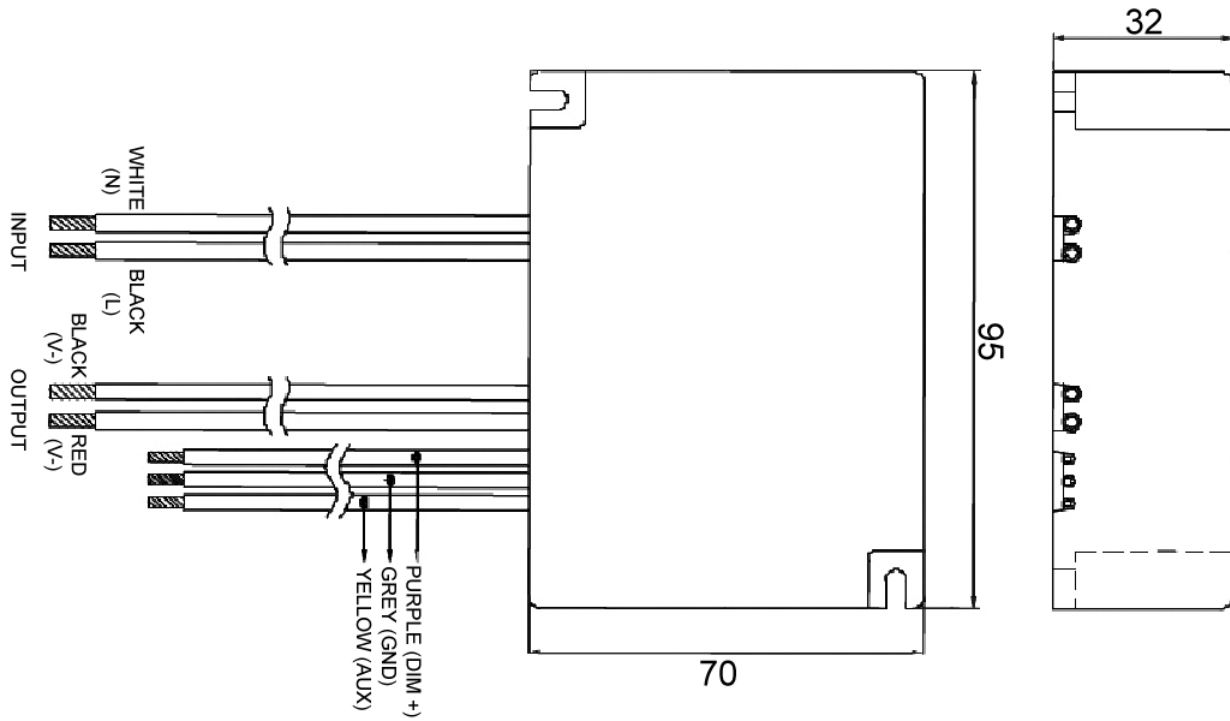
The input power line will be fused with a 2A/300V fuse

**Output Over-voltage Protection**

Auto shutdown

**Input / Output Connections**

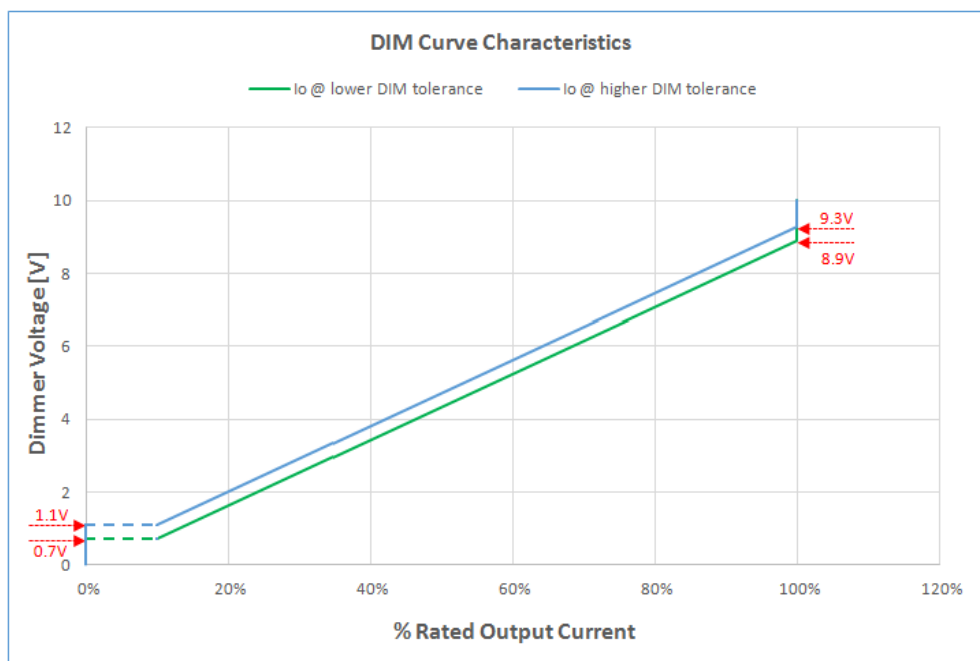
Position	Terminal Color	Specification
Input	Black	AWG16 Solid Wire
	White	AWG16 Solid Wire
Output	Red	AWG18 Solid Wire
	Blue	AWG18 Solid Wire
Dim+	Purple	AWG20 Solid Wire
Dim-	Grey	AWG20 Solid Wire
Auxiliary	Yellow	AWG20 Solid Wire



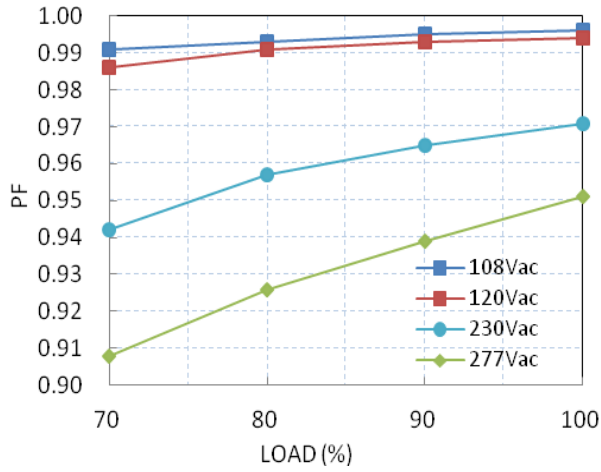
### Dimming Characteristics

#### Resistive Dimming Functions

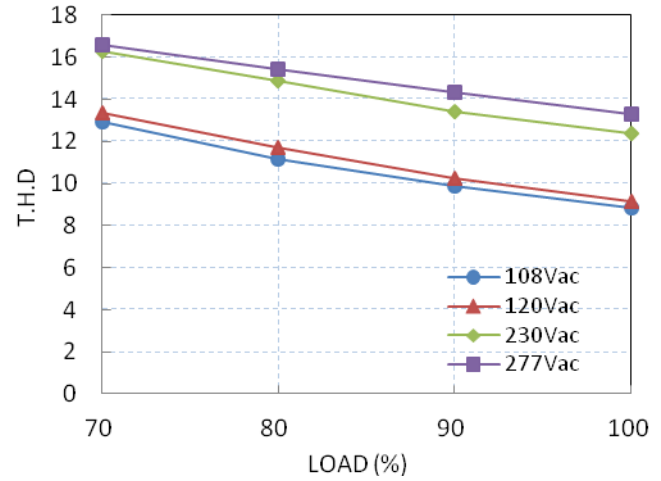
Resistance Value	0kΩ	9kΩ	13kΩ	23kΩ	45kΩ	68kΩ	91kΩ
Dim Voltage	0V	0.9V	1.3V	2.3V	4.5V	6.8V	9.1V
Output Current	Off	Off	15%	25%	50%	75%	100%



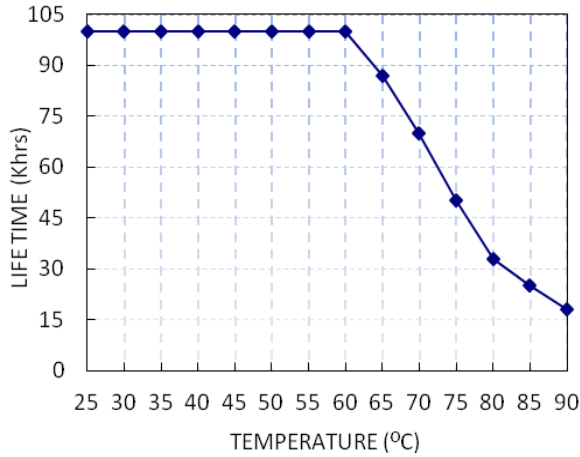
Power Factor vs. Load



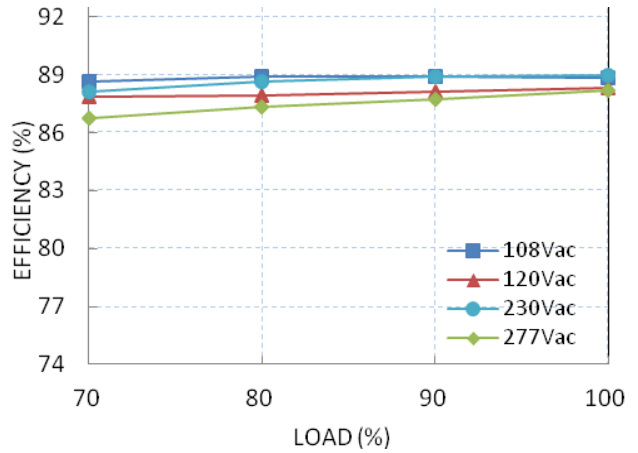
Total Harmonic Distortion vs. Load



Lifetime vs. Tc

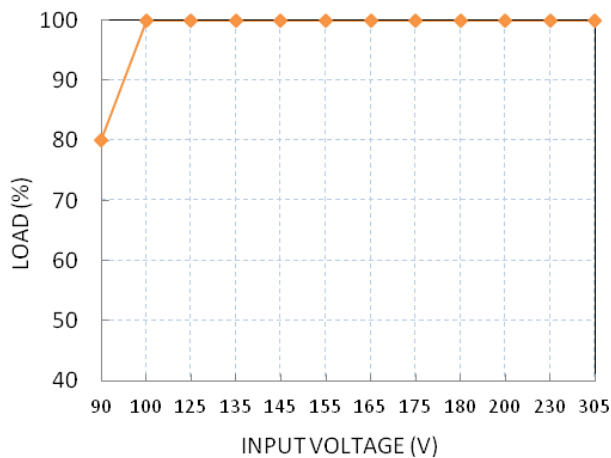


Efficiency vs. Load (PDA041W-700B)



Temperature Rating

Static Characteristic: Load vs. Input Voltage



Derating Curve: Load vs Ta

